

**Corporate Headquarters**

3788 McCray Street  
Riverside, CA 92506  
951.686.1070

**Palm Desert Office**

36-951 Cook Street #103  
Palm Desert, CA 92211  
760.568.5005

**Murrieta Office**

41391 Kalmia Street #320  
Murrieta, CA 92562  
951.686.1070

October 27, 2014

Mr. Karl Drew, General Manager  
**CRESTLINE VILLAGE WATER DISTRICT**  
P.O. Box 3347  
Crestline, California 92325-3347

RE: Design Engineering Services Budget for the  
Valle Drive Well Drilling Project

Dear Karl:

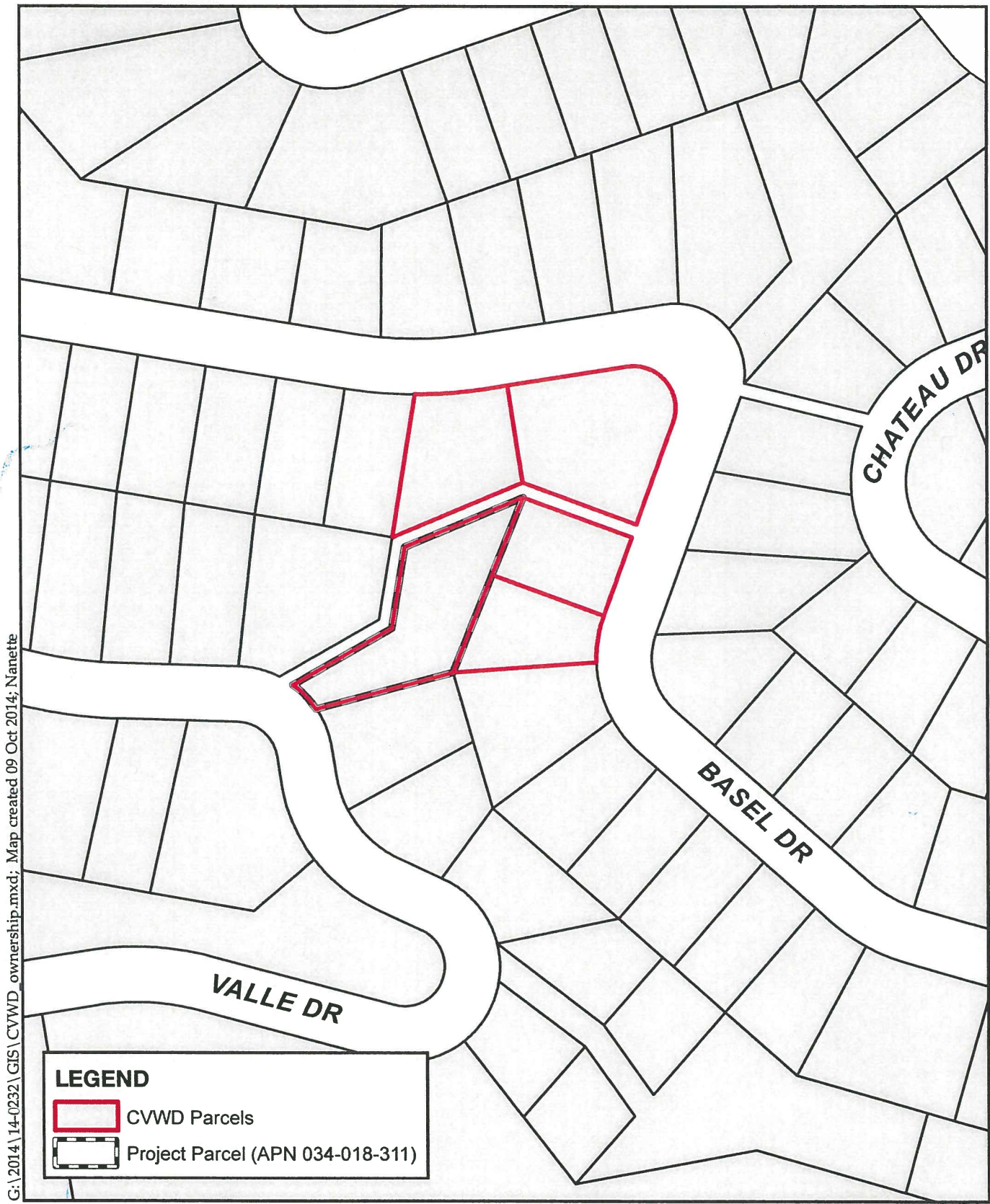
We have prepared this letter to provide an estimated budget for the subject project's specified engineering services. This letter is comprised of the following sections:

1. Project Understanding
2. Scope of Work
3. Project Team
4. Engineering Services Budget

## **SECTION 1: PROJECT UNDERSTANDING**



### **Overview**

Crestline Village Water District (District) previously operated a horizontal well on APN 034-018-311 (map attached). The District abandoned the well because it appeared to be under the influence of surface water. A Hydrologic Conditions and Possible Well Site Locations report dated October 18, 2012 by Independent Geo-Environmental Consultants (IGC) identified this site as a potential well site capable of producing approximately 25 gpm. Because of the parcel's steep terrain and existing environmental conditions the feasibility of drilling a vertical well with adequate site access was deemed to be very difficult.



G:\2014\14-0232\GIS\CVWD\_ownership.mxd; Map created 09 Oct 2014; Nanette

**LEGEND**

-  CVWD Parcels
-  Project Parcel (APN 034-018-311)

Source: San Bernardino Co.  
GIS, 2014



**CVWD-Owned Parcels**  
CVWD Well Site



As an alternative, the feasibility of drilling a slant well from Valle Drive into the designated water bearing area was determined to be very feasible and therefore the District is proceeding with the subject project.

California Environmental Quality Act (CEQA) documentation [Notice of Exemption (NOE)] was prepared for the project. Therefore no additional CEQA work will be required. However, provisions of the NOE's supporting technical studies will need to be incorporated into the project's specifications.

## **SECTION 2: SCOPE OF WORK**

### **General**

Webb shall perform the following Scope of Services for the Valle Drive Project.

#### **1. Perimeter Boundary and Topographical Survey**

Webb will perform a boundary survey of the perimeter of the parcels owned by the District marking pertinent points so that the project's boundary is clearly identified. Also, a topographic survey will be made to clearly identify the ephemeral drainage area which must be avoided, and provide topographical site conditions to determine flood areas that should be avoided in locating above ground well facilities.

#### **2. Drainage Study**

Hydrological and hydraulic calculations will be performed such that the high water level during storm conditions can be determined.

#### **3. Well Drilling Technical Specifications**

Webb Associates will use the services of Geoscience Support Services Incorporated (Geoscience) to prepare detailed technical plans and specifications for the construction of the proposed new well. Geoscience is one of the premier hydrogeologic firms specializing in groundwater consulting services since 1978.

#### **4. Bidding Services**

Prepare bidding documents and specifications for a publicly advertised bid using standard District boilerplates and Webb general specifications. A master document will be prepared ready for reproduction. Bidding will be coordinated by Webb; and the District will pay for legal advertising and reproduction services directly. Respond to Bidders questions when requested by the District. Prepare two (2) addendums to

the plans and specifications and transmit by mail, email and/or fax to bidders. Assist the District with bid review. Prepare Bid Item Summary Spreadsheet.

### **Schedule**

Webb Associates understands the District would like the new well completed next year. As such we will have the well drilling plans and specifications ready for an early January 2015 advertising, followed by an early February 2015 bid opening, and contract award at the February Board meeting with well drilling completion expected in June, 2015. Dependent upon the final well testing results we would recommend the well equipping plans and specifications be prepared shortly thereafter with the District negotiating a construction contract with a select bidders list to expedite well equipping and operation prior to winter weather conditions.

### **Additional Services**

Services which are not specifically identified herein as services to be performed by Webb Associates are considered Additional Services for the purposes of this budget. The District may request that Webb Associates perform services which are Additional Services. However, Webb Associates is not obligated to perform such Additional Services unless an amendment to this budget has been fully executed setting forth the scope, schedule, and fee for such Additional Services.

### **SECTION 3: PROJECT TEAM**

The Webb Associates project team is anticipated to be as follows:

NAME	TITLE	PROJECT ROLE
Wally Franz, P.E.	Vice President	Principal-In-Charge/Project Manager
Dave Algranti, P.E.	Chief Design Engineer	QA/QC
Sam Gershon, R.C.E.	Senior Vice President	Technical Advisor
Geoscience Inc.	Subconsultant	Plans & Technical Specifications Preparation
Annette Trussell	Project Coordinator	Administrative Support

Wally Franz will be the day to day contact and is available at either (951) 686-1070 or [wally.franz@webbassociates.com](mailto:wally.franz@webbassociates.com) to address any questions or concerns over the course of the project.

**SECTION 4: ENGINEERING SERVICES BUDGET**

Based upon the project's Scope of Work, our engineering services budget is as follows:

<u>ENGINEERING SERVICES TASK</u>	<u>TOTAL ESTIMATED ENGINEERING SERVICES BUDGET<sup>(1)</sup></u>
1. Boundary & Topographical Survey .....	\$9,900
2. Hydrologic & Hydraulic Review.....	\$5,000
3. Design Drawings and Specifications .....	\$24,800
4. Bidding Services.....	\$6,800
5. Expenses.....	\$1,000
<b>Total.....</b>	<b><u>\$47,500</u></b>

Since the subject project is currently in the conceptual engineering stage, unforeseen additional work activities may arise as the project progresses. As such, the District may wish to allocate an additional 10-15% of the total engineering services budget for internal budget allocation purposes only.

---

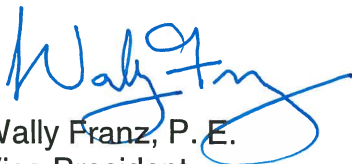
<sup>(1)</sup> The amounts indicated for each individual project task are estimated budget amounts; and accordingly, the actual amounts may be more or less than shown. However, the overall total for engineering services as described in the Scope of work will not be exceeded without written authorization from the District.

Mr. Karl Drew, General Manager  
**CRESTLINE VILLAGE WATER DISTRICT**  
October 27, 2014  
Page 6 of 6

Should you have any questions or require additional information, please contact our office.

Sincerely,

**ALBERT A. WEBB ASSOCIATES**



Wally Franz, P. E.  
Vice President

WF:at

Enclosure: Fee Schedule 36