

**Crestline Village Water District  
Source of Supply Production Report  
System Loss - Last 13 Months  
In Cubic Feet**

03/11/15

	Feb	Mar	Apr	May	June	July	Aug	Sept	Oct	Nov	Dec	Jan '15	Feb	Total
<b>Sources of Supply</b>														
Wells	1,029,924	1,150,473	1,135,412	1,099,166	1,136,842	1,044,343	883,820	1,086,538	934,638	839,687	859,313	891,181	834,933	12,926,270
Purchased Water	712,366	886,925	941,993	1,333,475	1,919,117	2,235,695	1,814,132	1,703,475	1,510,400	1,281,686	1,085,776	1,365,576	964,211	17,754,827
Adjustment to Wells *	0	0	0	0	0	0	0	0	0	0	0	0	0	0
<b>Total Water Supplied</b>	<b>1,742,290</b>	<b>2,037,398</b>	<b>2,077,405</b>	<b>2,432,641</b>	<b>3,055,959</b>	<b>3,280,038</b>	<b>2,697,952</b>	<b>2,790,013</b>	<b>2,445,038</b>	<b>2,121,373</b>	<b>1,945,089</b>	<b>2,256,757</b>	<b>1,799,144</b>	<b>30,681,097</b>
<b>Water Used **</b>														
Metered Accounts														
Crestline Area	820,911	910,620	936,230	1,094,574	1,305,561	1,391,440	1,189,974	1,183,507	1,095,121	950,998	862,215	996,288	808,783	13,546,222
Lake Gregory Area	865,939	948,510	992,275	1,080,629	1,446,406	1,624,329	1,405,655	1,326,628	1,273,188	1,139,901	954,668	1,034,564	854,838	14,947,530
Change in Storage	(57,425)	(20,066)	14,489	(72,865)	24,026	61,310	33,081	(17,827)	(59,722)	18,650	(23,836)	36,242	(25,604)	(89,547)
Flushing, System & Other	21,980	19,669	19,061	25,889	18,939	17,739	16,439	18,774	15,794	14,439	14,773	16,779	14,439	234,714
<b>Accounted for Water</b>	<b>1,651,405</b>	<b>1,858,733</b>	<b>1,962,055</b>	<b>2,128,227</b>	<b>2,794,932</b>	<b>3,094,818</b>	<b>2,645,149</b>	<b>2,511,082</b>	<b>2,324,381</b>	<b>2,123,988</b>	<b>1,807,820</b>	<b>2,083,873</b>	<b>1,652,456</b>	<b>28,638,919</b>
<b>System Loss (CF)</b>	90,885	178,665	115,350	304,414	261,027	185,220	52,803	278,931	120,657	(2,615)	137,269	172,884	146,688	2,042,178
<b>System Loss (%)</b>	5.2%	8.8%	5.6%	12.5%	8.5%	5.6%	2.0%	10.0%	4.9%	-0.1%	7.1%	7.7%	8.2%	6.7%
<b>System Loss (GPM)</b>	16.9	29.9	20.0	52.7	43.7	31.0	9.5	45.3	20.2	(0.4)	24.6	29.0	27.2	29.1
<b>Month to Month Averaging ***</b>														
<b>System Loss (CF)</b>	45,443	134,775	147,008	209,882	282,721	223,124	119,012	165,867	199,794	59,021	67,327	155,077	159,786	1,968,837
<b>System Loss (%)</b>	2.6%	7.0%	7.2%	9.0%	10.5%	7.1%	3.8%	6.0%	7.5%	2.4%	3.5%	7.4%	7.9%	6.4%
<b>System Loss (GPM)</b>	8.4	23.4	25.0	36.3	48.2	37.4	20.2	27.4	32.7	9.9	12.1	26.8	28.1	28.0
<b>Estimated Uses</b>														
Known leaks - Est. loss	337	5,775	24,225	578	8,807	4,251	1,444	5,251	5,791	963	5,063	75	1,155	63,716
<b>Total Estimated Uses</b>	<b>337</b>	<b>5,775</b>	<b>24,225</b>	<b>578</b>	<b>8,807</b>	<b>4,251</b>	<b>1,444</b>	<b>5,251</b>	<b>5,791</b>	<b>963</b>	<b>5,063</b>	<b>75</b>	<b>1,155</b>	<b>63,716</b>
<b>Unaccounted for Water (CF)</b>	90,548	172,890	91,125	303,836	252,220	180,969	51,359	273,680	114,866	(3,578)	132,206	172,809	145,533	1,978,462
<b>Unaccounted For (%)</b>	5.2%	8.5%	4.4%	12.5%	8.3%	5.5%	1.9%	9.8%	4.7%	-0.2%	6.8%	7.7%	8.1%	6.5%
<b>Unaccounted For (GPM)</b>	16.8	29.0	15.8	52.6	42.3	30.3	9.2	44.4	19.2	(0.6)	23.7	29.0	27.0	28.2
Number of Days in Period	28	31	30	30	31	31	29	32	31	31	29	31	28	365

**NOTES:**

Estimated - Includes estimated billing period. This month includes estimated consumption. The following billing period will reflect adjustments to actual water used.

\* - Currently there are no Adjustments to Wells being made.

\*\* - Water Used - Metered Accounts is adjusted to the time period in Total Water Supplied

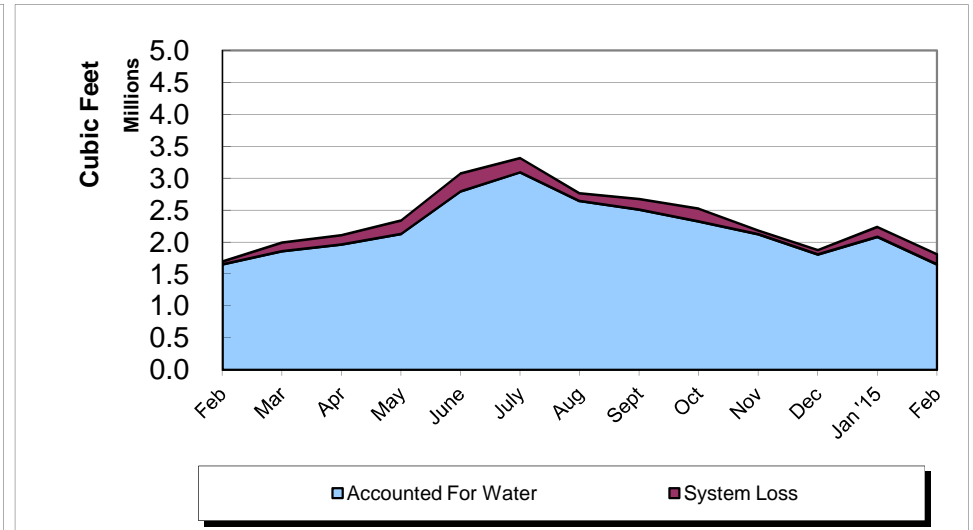
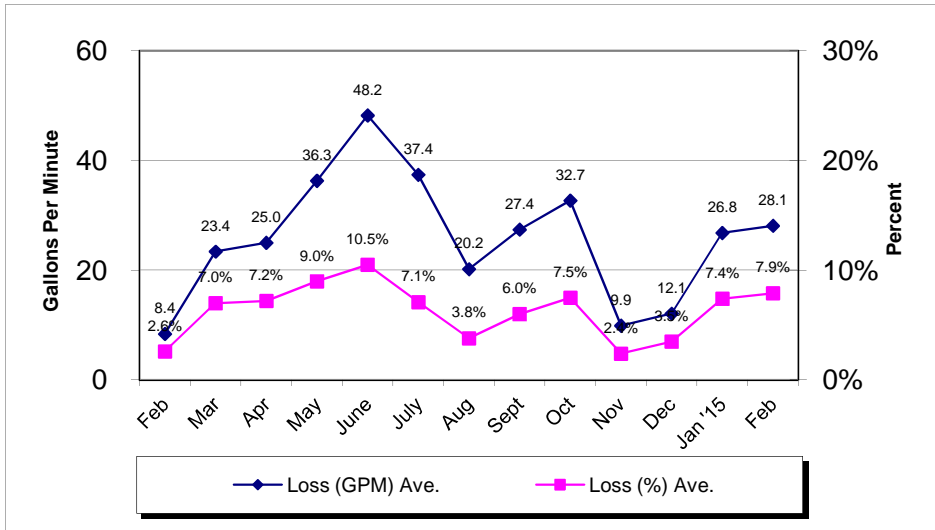
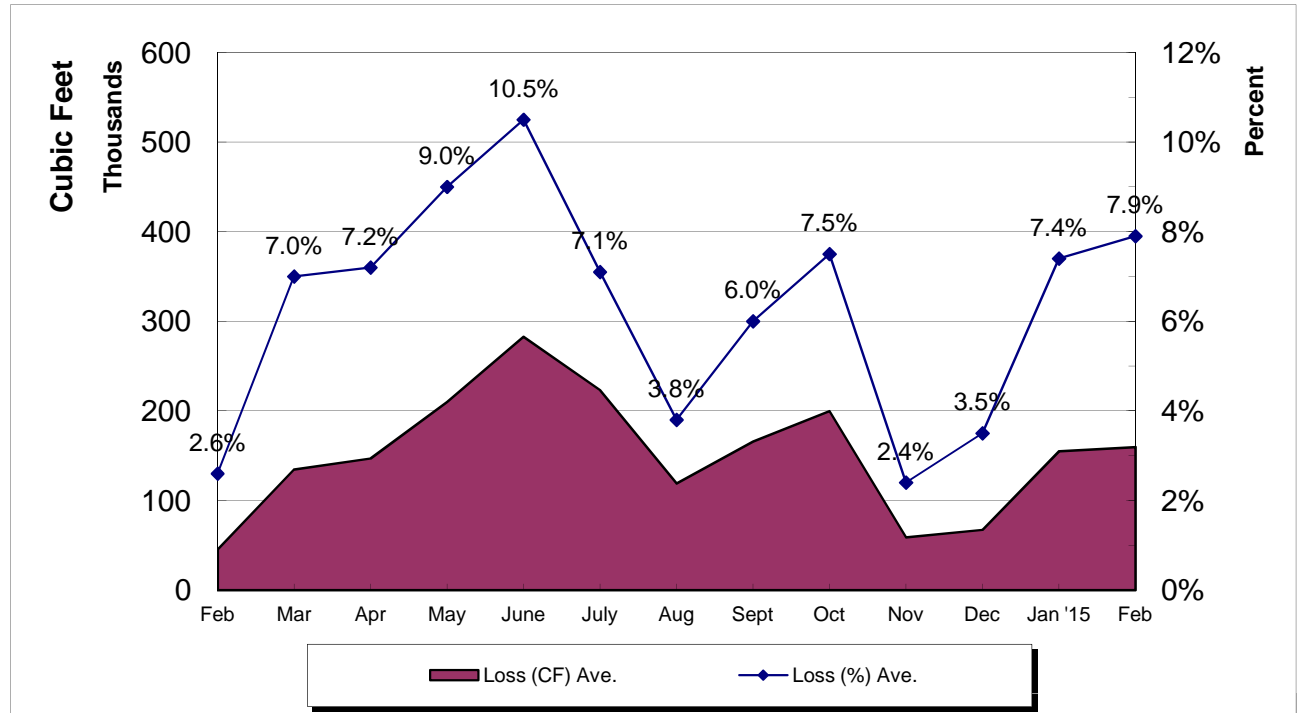
\*\*\* - Month to Month averaging averages the System Loss for each period with the immediately prior period for trending purposes.

System Loss Costs	This Month	Average
Cost of System Loss:	\$4,218	\$3,998
Cost of 5% System Loss:	2,375	3,115
<b>Amount above (below) 5% System Loss</b>	<b>\$1,843</b>	<b>\$883</b>
Note: Cost is calculated at highest cost (CLAWA Rate: \$2.64/100 c.f.)		

# Crestline Village Water District

## System Loss Last 13 Months

With Month to Month Averaging



**Crestline Village Water District**  
**System Report on: 02/26/15**

**For Month of: February 2015**

Water Storage (Gal)	Capacity	Gallons/ Foot	Level (FT)	Current Storage	% of Capacity
Beacon I & II	385,354	16,754	17.80	298,221	77.39%
Saxon	337,674	14,681	16.90	248,109	73.48%
Pinecrest I & II	2,063,492	54,302	35.40	1,922,291	93.16%
Zurich	380,500	16,910	19.50	329,745	86.66%
Lakeview	1,230,212	27,959	33.30	931,035	75.68%
Old Mill	705,900	27,150	23.00	624,450	88.46%
Barn	444,443	19,753	18.90	373,332	84.00%
Wilson	983,681	33,920	25.50	864,960	87.93%
Chillon	337,674	14,681	17.50	256,918	76.08%
Brookside	748,067	28,772	19.90	572,563	76.54%
Chamois	1,026,532	39,482	22.20	876,500	85.38%
<b>Total</b>	<b>8,643,529</b>		<b>249.90</b>	<b>7,298,124</b>	<b>84.43%</b>

WELLS	Production M-T-D (Cubic Feet)	Status
Altdorf	52,584	On
Pioneer-2	37,542	On
Pioneer-1	30,585	On
Old Mill Springs	14,360	On
Maple Springs	15,990	On
Willow Springs	2,640	On
Brookside Springs	7,960	On
Hillside Springs	6,350	On
Pinecrest 1 & 2	16,500	On
Pinecrest Vertical	43,070	On
Cypress Vertical	78,370	On
Anderson Vertical	23,000	Off
Wilson Springs 1 & 2	80,158	On
Wilson Vertical	106,300	On
Felsen Vertical	157,320	On
Horst	37,600	On
Jewel 64	62,578	On
Cathcart	15,600	On
Bergschrund	9,140	On
Chamois	0	Off
Chamois Vertical	33,380	On
	0	0
	0	0
	0	0
Lewter	3,906	On
<b>Total</b>	<b>834,933</b>	

C.L.A.W.A.	FLOWS - GPM				Production M-T-D (Cubic Feet)
	Timed	Requested	Variance	% Variance	
CF - Crestline	50	50	0	0.00%	259,893
Mile High 2"	30	30	0	0.00%	156,243
Mile High 4"	0	0	0	0.00%	0
Pinecrest 2"	0	0	0	0.00%	1,283
Pinecrest 4"	50	50	0	0.00%	523,396
Lake Drive 2"	0	0	0	0.00%	0
Lake Drive 4"	0	0	0	0.00%	0
Camp Seely	0	0	0	0.00%	23,396
<b>Total</b>	<b>130</b>	<b>130</b>	<b>0</b>	<b>0.00%</b>	<b>964,211</b>

February Purchases	GPM	Cubic Feet	Wells	GPM	Cubic Feet
Last Year M-T-D:	132.2	687,157		191.0	992,792
Actual M-T-D:	185.5	964,211		160.6	834,933
Over/(Under) Last Year:	53.3	277,054.0		(30.4)	(157,859.0)

Total	GPM	Cubic Feet
Last Year M-T-D:	323.2	1,679,949
Actual M-T-D:	346.1	1,799,144
Over/(Under) Last Year:	22.9	119,195.0

**Crestline Village Water District**  
**Source of Supply Production Report**  
**Cubic Feet**  
**Last 13 Months**

03/10/15

<b>Source Name</b>	<b>February'14</b>	<b>March</b>	<b>April</b>	<b>May</b>	<b>June</b>	<b>July</b>	<b>August</b>	<b>September</b>	<b>October</b>	<b>November</b>	<b>December</b>	<b>January '15</b>	<b>February</b>	<b>Last 12 Months</b>	<b>13 Months</b>
<b>Division 10</b>															
Altdorf	64,375	76,237	68,536	66,587	66,498	65,108	59,679	64,427	61,843	60,998	62,013	61,686	52,584	766,196	830,571
Pioneer #2	47,128	51,721	48,985	47,961	48,578	47,425	43,959	47,717	45,813	44,633	41,726	43,660	37,542	549,720	596,848
Pioneer #1	38,958	57,516	45,501	51,728	40,081	37,655	33,243	35,677	33,762	32,630	46,662	37,187	30,585	482,227	521,185
Old Mill Springs	20,950	26,300	24,440	22,020	23,470	19,900	17,250	17,800	16,620	16,590	16,320	15,900	14,360	230,970	251,920
Maple Springs	37,324	40,766	36,909	35,069	34,328	32,422	28,737	29,337	27,505	24,018	25,369	19,959	15,990	350,409	387,733
Willow Springs	6,300	16,060	14,070	12,830	11,140	8,810	7,520	4,790	3,760	3,030	3,860	3,350	2,640	91,860	98,160
Brookside Springs	9,220	2,020	3,350	3,380	16,340	13,970	8,100	9,350	8,930	8,150	11,000	9,710	7,960	102,260	111,480
Hillside Springs	10,340	11,520	10,820	10,530	10,460	10,210	8,910	9,510	8,550	8,100	7,210	7,670	6,350	109,840	120,180
Pinecrest	28,910	36,280	33,350	33,570	32,430	29,810	25,650	25,920	22,760	19,020	21,720	21,970	16,500	318,980	347,890
Pinecrest Vertical	46,310	51,240	49,760	50,480	52,160	50,410	48,290	48,590	1,620	0	0	0	43,070	395,620	441,930
Cypress Vertical	82,570	93,290	90,610	71,830	91,570	90,890	84,810	92,890	89,030	89,140	65,690	87,820	78,370	1,025,940	1,108,510
Anderson Vertical	60,400	52,400	99,800	94,900	64,300	60,700	55,300	79,200	33,400	31,800	29,100	65,200	23,000	689,100	749,500
Division 10 Totals	452,785	515,350	526,131	500,885	491,355	467,310	421,448	465,208	353,593	338,109	330,670	374,112	328,951	5,113,122	5,565,907
<b>Division 20</b>															
Wilson Springs #1 & 2	110,596	113,716	109,378	108,981	108,286	104,535	97,023	100,706	97,356	95,251	85,172	72,451	80,158	1,173,013	1,283,609
Wilson Vertical	135,800	137,800	133,500	129,600	152,200	135,100	76,400	123,300	147,300	78,900	94,400	74,500	106,300	1,389,300	1,525,100
Felsen Vertical	125,550	167,220	166,870	154,190	183,340	168,100	90,430	188,450	138,940	134,540	169,620	181,970	157,320	1,900,990	2,026,540
Horst	55,700	61,500	58,100	56,600	56,900	54,600	49,000	51,900	48,300	46,300	42,100	44,200	37,600	607,100	662,800
Jewell No. 64	73,558	71,107	61,996	70,841	67,618	37,326	73,351	75,752	72,530	72,576	69,431	71,974	62,578	807,080	880,638
Cathcart	19,600	22,500	21,400	21,100	21,200	20,700	18,700	20,800	20,000	18,900	17,200	18,300	15,600	236,400	256,000
Bergschrund	14,134	14,817	13,642	12,829	10,662	12,099	15,691	15,053	13,174	12,095	10,606	10,959	9,140	150,767	164,901
Chamois	0	0	0	0	0	0	0	0	0	0	0	0	0	0	0
Chamois Vertical	37,560	41,550	39,870	39,350	40,410	39,920	37,350	40,720	38,970	38,600	35,880	38,290	33,380	464,290	501,850
Valle	0	0	0	0	0	0	0	0	0	0	0	0	0	0	0
Chillon 64 (stand-by)	0	0	0	0	0	0	0	0	0	0	0	0	0	0	0
Government	0	0	0	0	0	0	0	0	0	0	0	0	0	0	0
Lewter	4,641	4,913	4,525	4,790	4,871	4,653	4,427	4,649	4,475	4,416	4,234	4,425	3,906	54,284	58,925
Division 20 Totals	577,139	635,123	609,281	598,281	645,487	577,033	462,372	621,330	581,045	501,578	528,643	517,069	505,982	6,783,224	7,360,363
<b>Total District Sources</b>	<b>1,029,924</b>	<b>1,150,473</b>	<b>1,135,412</b>	<b>1,099,166</b>	<b>1,136,842</b>	<b>1,044,343</b>	<b>883,820</b>	<b>1,086,538</b>	<b>934,638</b>	<b>839,687</b>	<b>859,313</b>	<b>891,181</b>	<b>834,933</b>	<b>11,896,346</b>	<b>12,926,270</b>
<b>C.L.A.W.A.</b>															
Crest Forest 6"	273,262	304,144	293,048	292,246	392,513	434,091	337,567	361,631	361,631	301,872	279,813	351,471	259,893	3,969,920	4,243,182
Mile High Park 2"	109,291	181,845	174,078	94,037	0	0	0	0	0	232,487	163,717	173,864	156,243	1,176,271	1,285,562
Mile High Park 4"	0	0	0	104,011	230,749	273,128	249,198	269,251	269,251	0	33,289	0	0	1,428,877	1,428,877
Pinecrest 2"	0	0	0	0	0	0	0	0	0	0	0	0	1,283	1,283	1,283
Pinecrest 4"	329,813	374,198	454,412	788,636	1,214,973	1,358,690	1,190,909	1,031,417	1,031,417	716,578	579,679	822,995	523,396	10,087,300	10,417,113
Lake Drive 2"	0	0	0	0	0	0	94	0	0	0	0	0	0	94	94
Lake Drive 4"	0	0	0	0	0	93,583	0	0	0	0	0	0	0	93,583	93,583
Camp Seely	0	26,738	20,455	54,545	80,882	76,203	36,364	41,176	41,176	30,749	29,278	17,246	23,396	478,208	478,208
<b>C.L.A.W.A. Totals</b>	<b>712,366</b>	<b>886,925</b>	<b>941,993</b>	<b>1,333,475</b>	<b>1,919,117</b>	<b>2,235,695</b>	<b>1,814,132</b>	<b>1,703,475</b>	<b>1,703,475</b>	<b>1,281,686</b>	<b>1,085,776</b>	<b>1,365,576</b>	<b>964,211</b>	<b>17,235,536</b>	<b>17,947,902</b>
<b>Grand Totals</b>	<b>1,742,290</b>	<b>2,037,398</b>	<b>2,077,405</b>	<b>2,432,641</b>	<b>3,055,959</b>	<b>3,280,038</b>	<b>2,697,952</b>	<b>2,790,013</b>	<b>2,638,113</b>	<b>2,121,373</b>	<b>1,945,089</b>	<b>2,256,757</b>	<b>1,799,144</b>	<b>29,131,882</b>	<b>30,874,172</b>

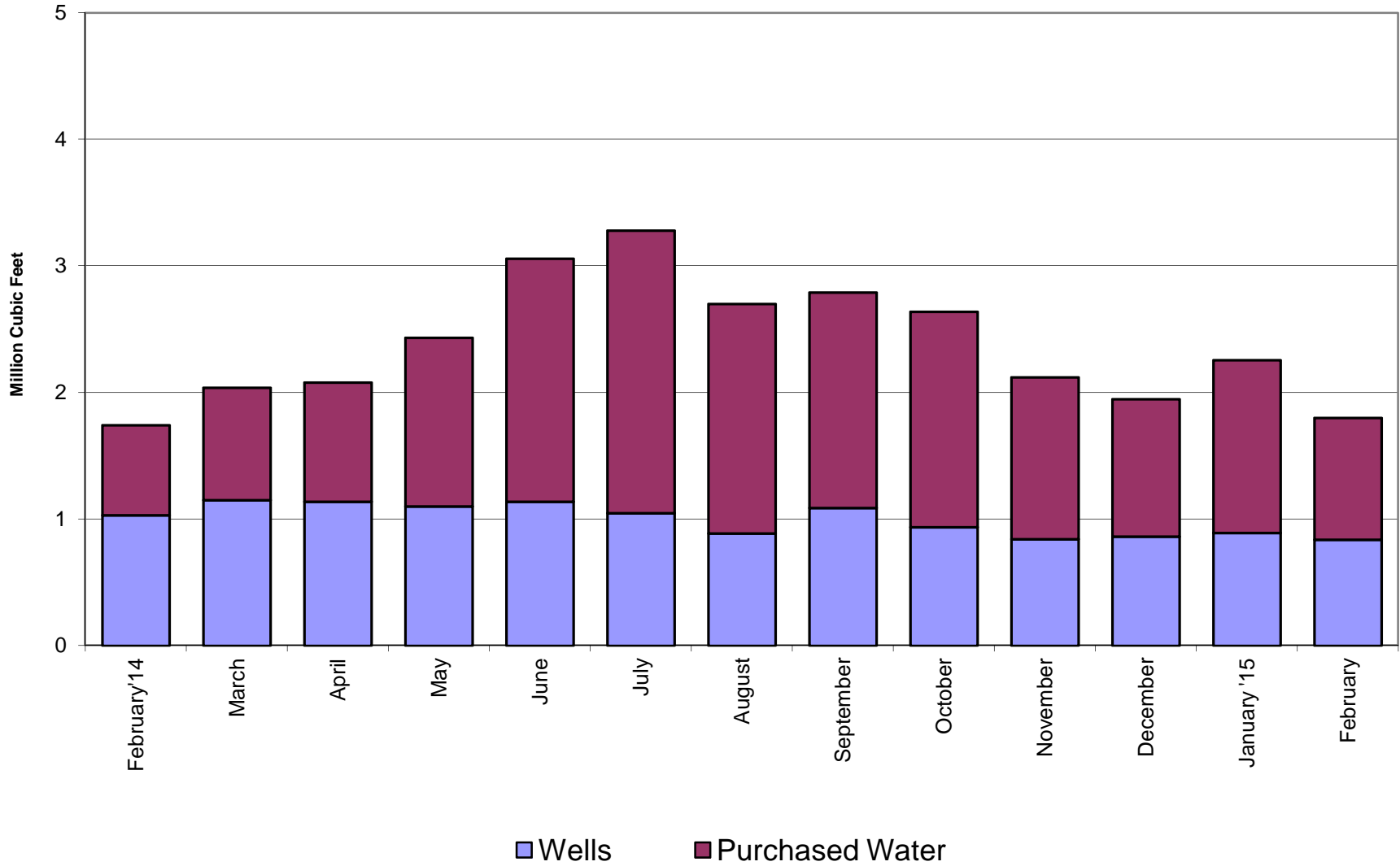
**Crestline Village Water District  
Source of Supply Production Report  
Cubic Feet  
Last 13 Months**

03/10/15

<u>Source Name</u>	<u>February'14</u>	<u>March</u>	<u>April</u>	<u>May</u>	<u>June</u>	<u>July</u>	<u>August</u>	<u>September</u>	<u>October</u>	<u>November</u>	<u>December</u>	<u>January '15</u>	<u>February</u>	<u>Last 12 Months</u>	<u>13 Months</u>
<b>District Sources</b>															
Division 10	452,785	515,350	526,131	500,885	491,355	467,310	421,448	465,208	353,593	338,109	330,670	374,112	328,951	5,113,122	5,565,907
Division 20	577,139	635,123	609,281	598,281	645,487	577,033	462,372	621,330	581,045	501,578	528,643	517,069	505,982	6,783,224	7,360,363
<b>Total</b>	<b>1,029,924</b>	<b>1,150,473</b>	<b>1,135,412</b>	<b>1,099,166</b>	<b>1,136,842</b>	<b>1,044,343</b>	<b>883,820</b>	<b>1,086,538</b>	<b>934,638</b>	<b>839,687</b>	<b>859,313</b>	<b>891,181</b>	<b>834,933</b>	<b>11,896,346</b>	<b>12,926,270</b>
Division 10	43.96%	44.79%	46.34%	45.57%	43.22%	44.75%	47.68%	42.82%	37.83%	40.27%	38.48%	41.98%	39.40%	42.98%	43.06%
Division 20	56.04%	55.21%	53.66%	54.43%	56.78%	55.25%	52.32%	57.18%	62.17%	59.73%	61.52%	58.02%	60.60%	57.02%	56.94%
<b>Total</b>	<b>100.00%</b>	<b>100.00%</b>	<b>100.00%</b>	<b>100.00%</b>	<b>100.00%</b>	<b>100.00%</b>	<b>100.00%</b>	<b>100.00%</b>	<b>100.00%</b>	<b>100.00%</b>	<b>100.00%</b>	<b>100.00%</b>	<b>100.00%</b>	<b>100.00%</b>	<b>100.00%</b>
<b>All Sources</b>															
District Sources	1,029,924	1,150,473	1,135,412	1,099,166	1,136,842	1,044,343	883,820	1,086,538	934,638	839,687	859,313	891,181	834,933	11,896,346	12,926,270
C.L.A.W.A.	712,366	886,925	941,993	1,333,475	1,919,117	2,235,695	1,814,132	1,703,475	1,703,475	1,281,686	1,085,776	1,365,576	964,211	17,235,536	17,947,902
<b>Total Sources</b>	<b>1,742,290</b>	<b>2,037,398</b>	<b>2,077,405</b>	<b>2,432,641</b>	<b>3,055,959</b>	<b>3,280,038</b>	<b>2,697,952</b>	<b>2,790,013</b>	<b>2,638,113</b>	<b>2,121,373</b>	<b>1,945,089</b>	<b>2,256,757</b>	<b>1,799,144</b>	<b>29,131,882</b>	<b>30,874,172</b>
District Sources	59.11%	56.47%	54.66%	45.18%	37.20%	31.84%	32.76%	38.94%	35.43%	39.58%	44.18%	39.49%	46.41%	40.84%	41.87%
C.L.A.W.A.	40.89%	43.53%	45.34%	54.82%	62.80%	68.16%	67.24%	61.06%	64.57%	60.42%	55.82%	60.51%	53.59%	59.16%	58.13%
<b>Total Sources</b>	<b>100.00%</b>	<b>100.00%</b>	<b>100.00%</b>	<b>100.00%</b>	<b>100.00%</b>	<b>100.00%</b>	<b>100.00%</b>	<b>100.00%</b>	<b>100.00%</b>	<b>100.00%</b>	<b>100.00%</b>	<b>100.00%</b>	<b>100.00%</b>	<b>100.00%</b>	<b>100.00%</b>

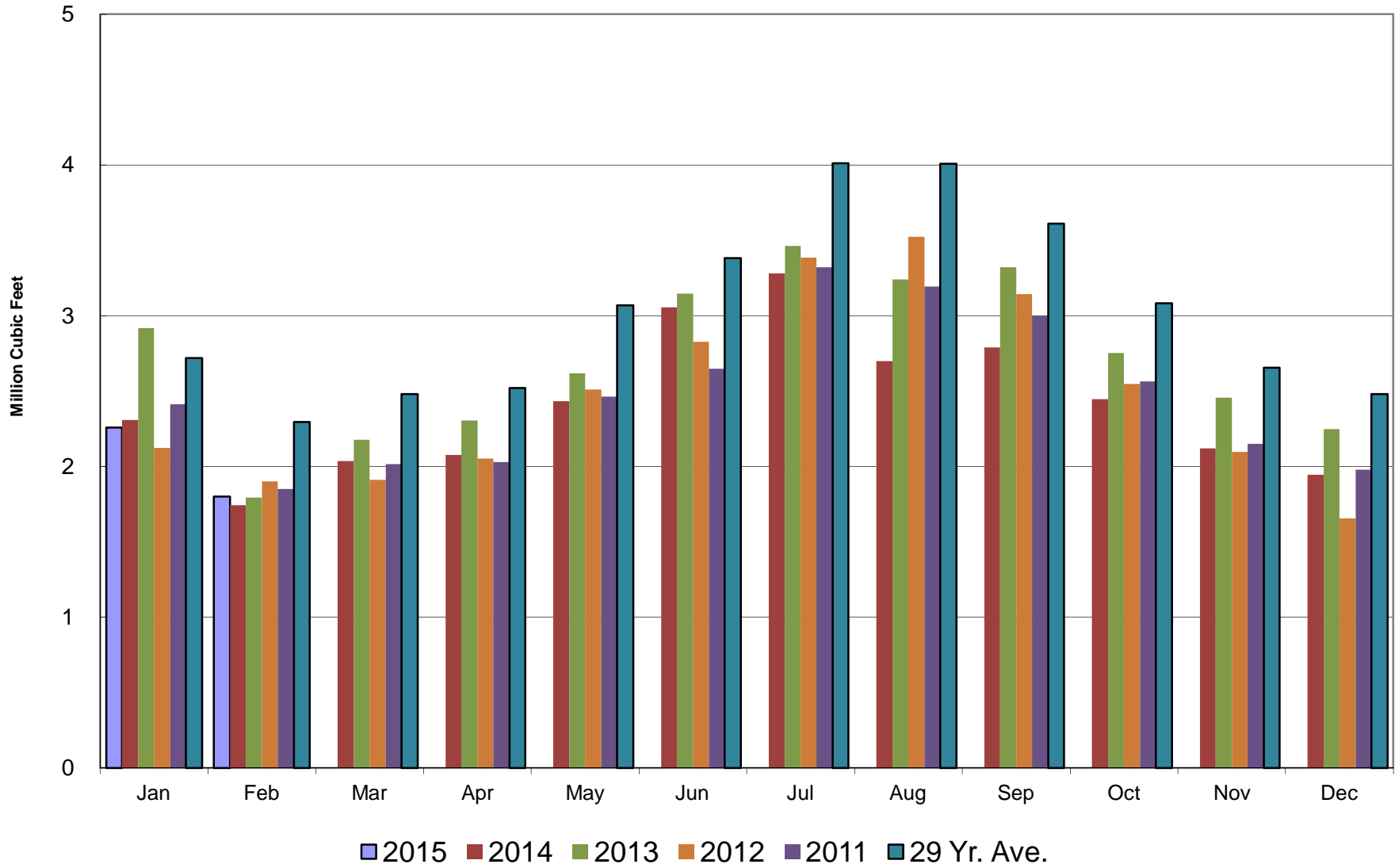
# Crestline Village Water District

## Water Sources - Last 13 Months



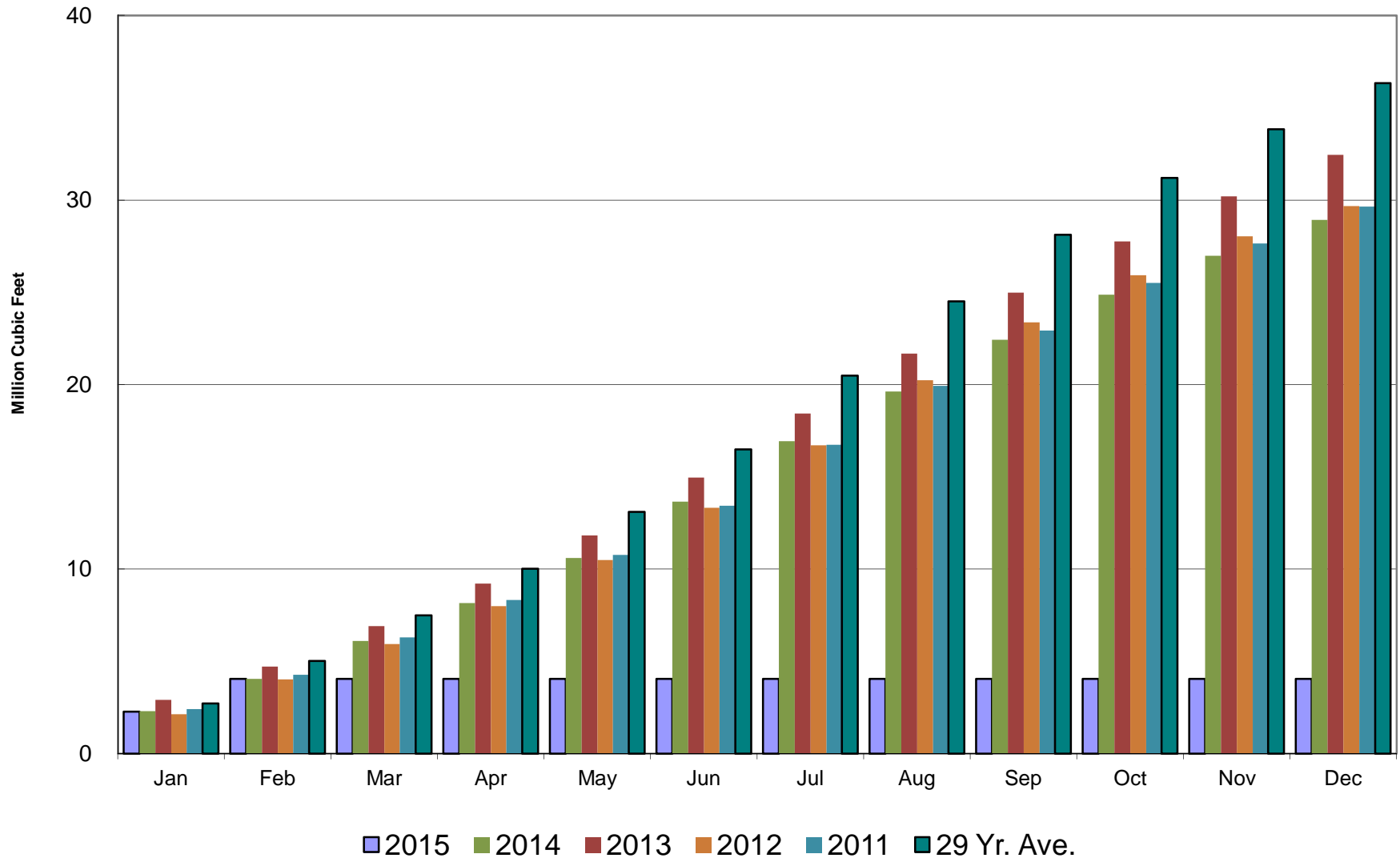
# Crestline Village Water District

## Total Production by Month



# Crestline Village Water District

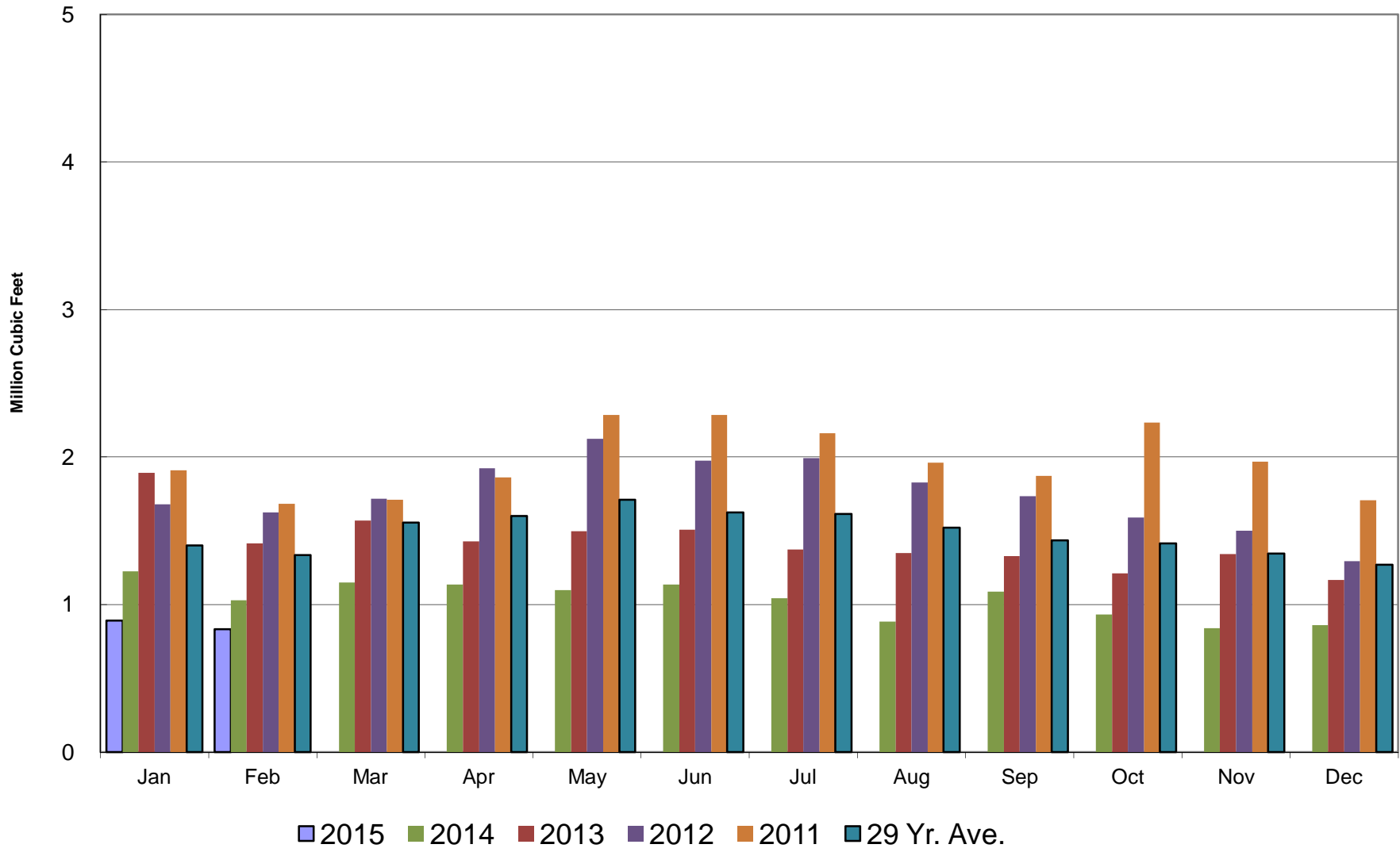
## Total Production Cumulative





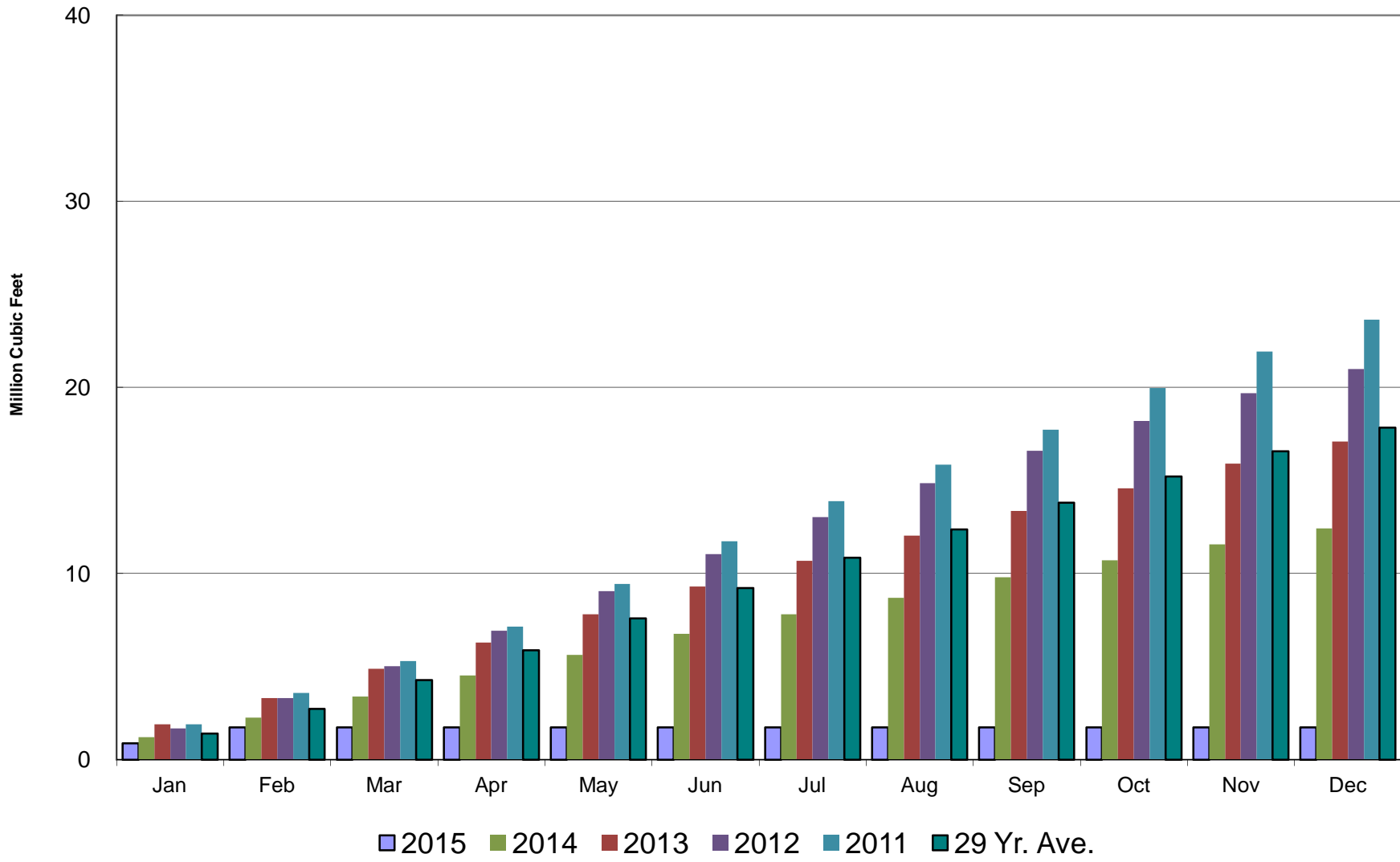
# Crestline Village Water District

## Well Production by Month



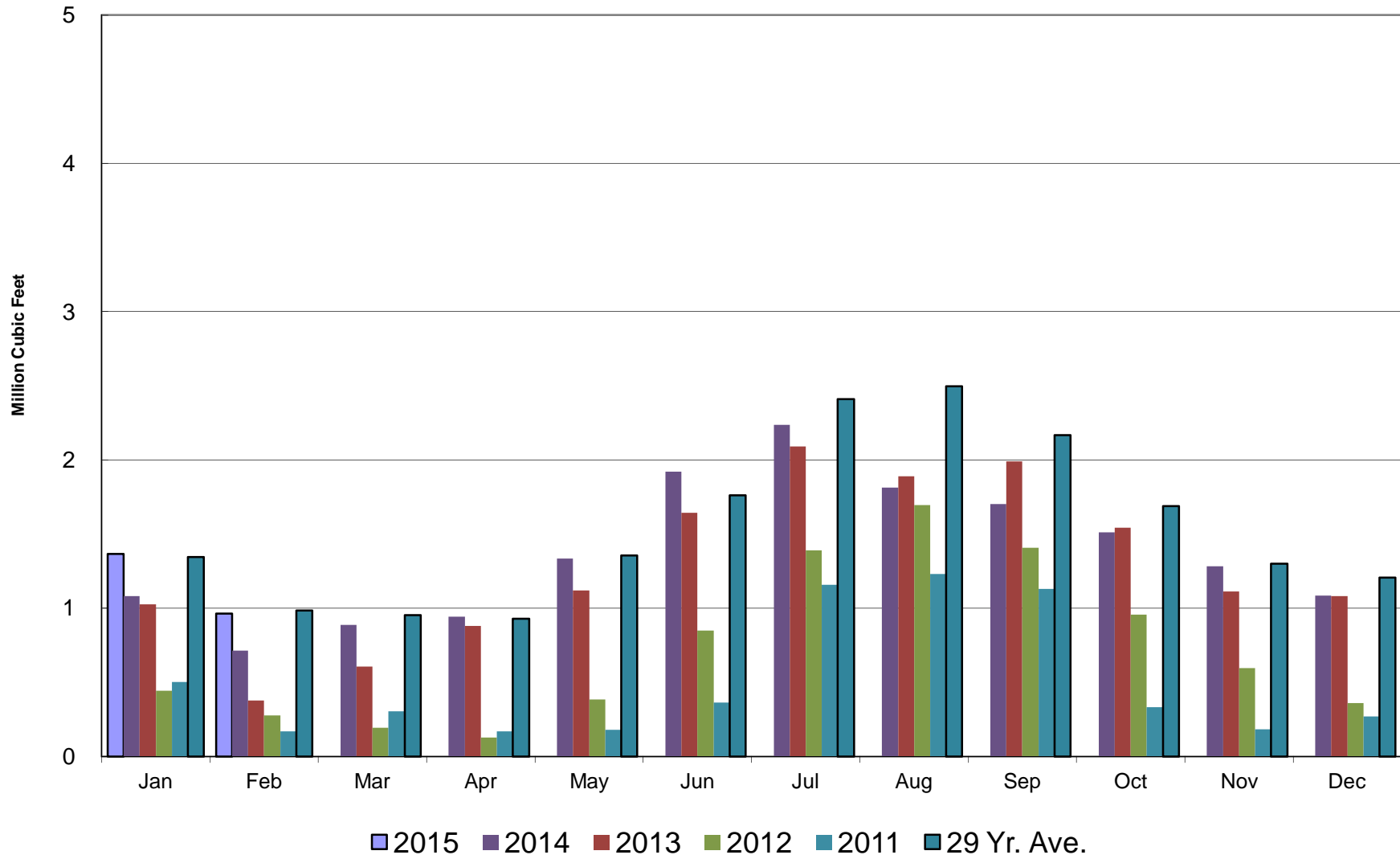
# Crestline Village Water District

## Well Production Cumulative



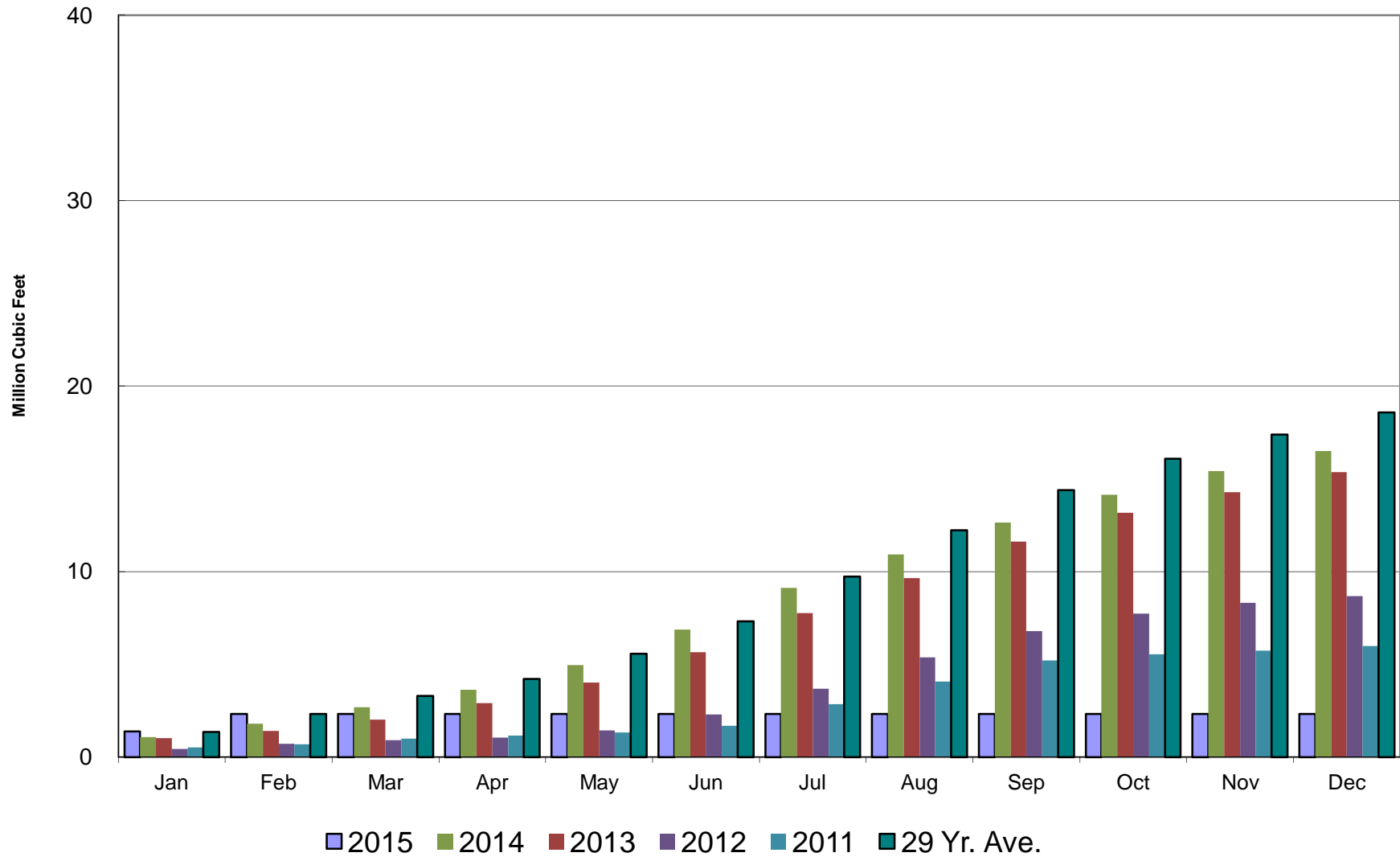
# Crestline Village Water District

## Purchased Water by Month



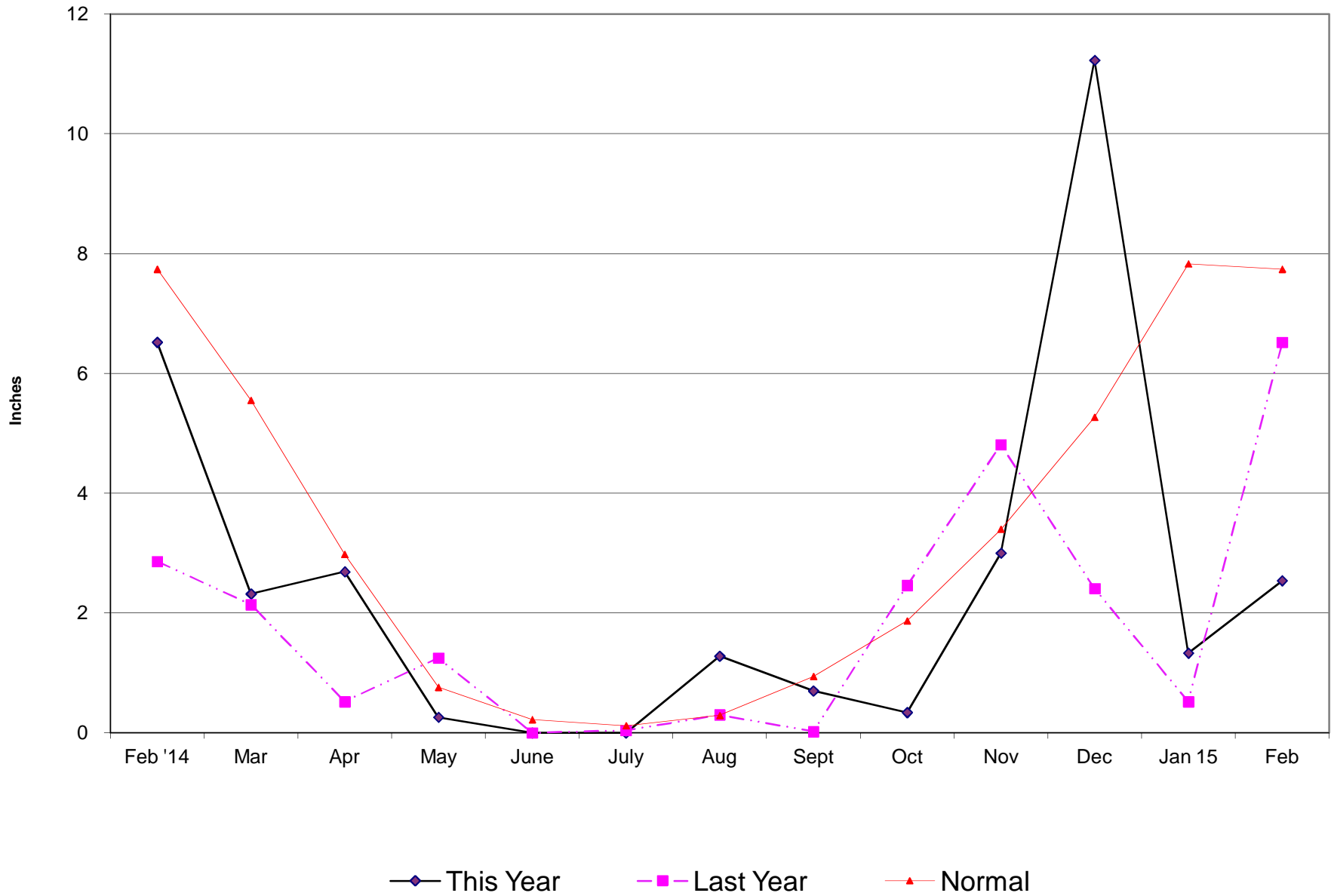
# Crestline Village Water District

## Purchased Water Cumulative



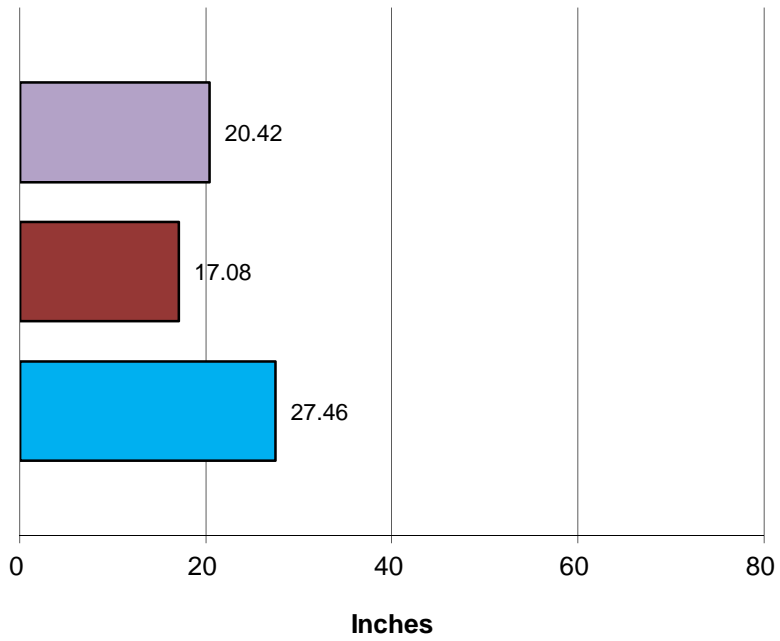
# Crestline Village Water District

## Rainfall - Last 13 Months



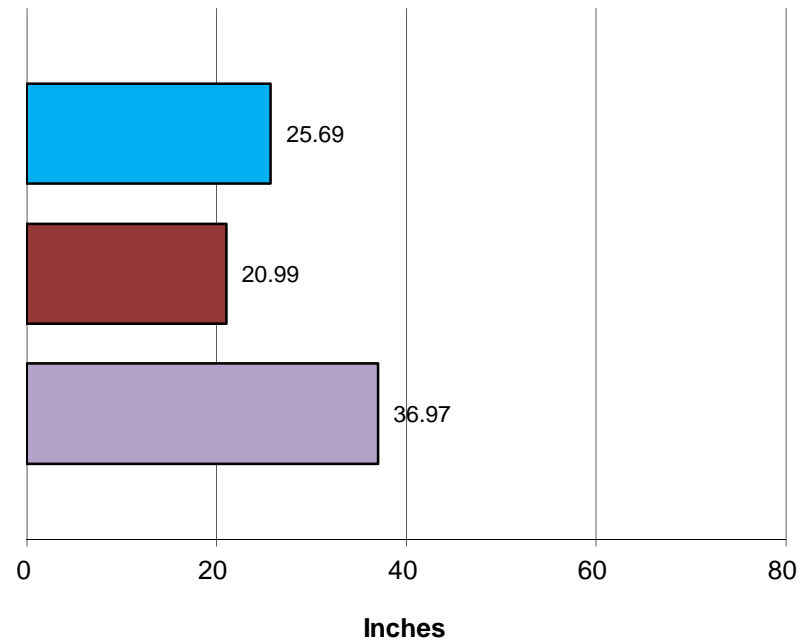
# Crestline Village Water District

### Total Rainfall July 1, 2014 to Beginning of Current Month



■ This Year ■ Last Year ■ Normal

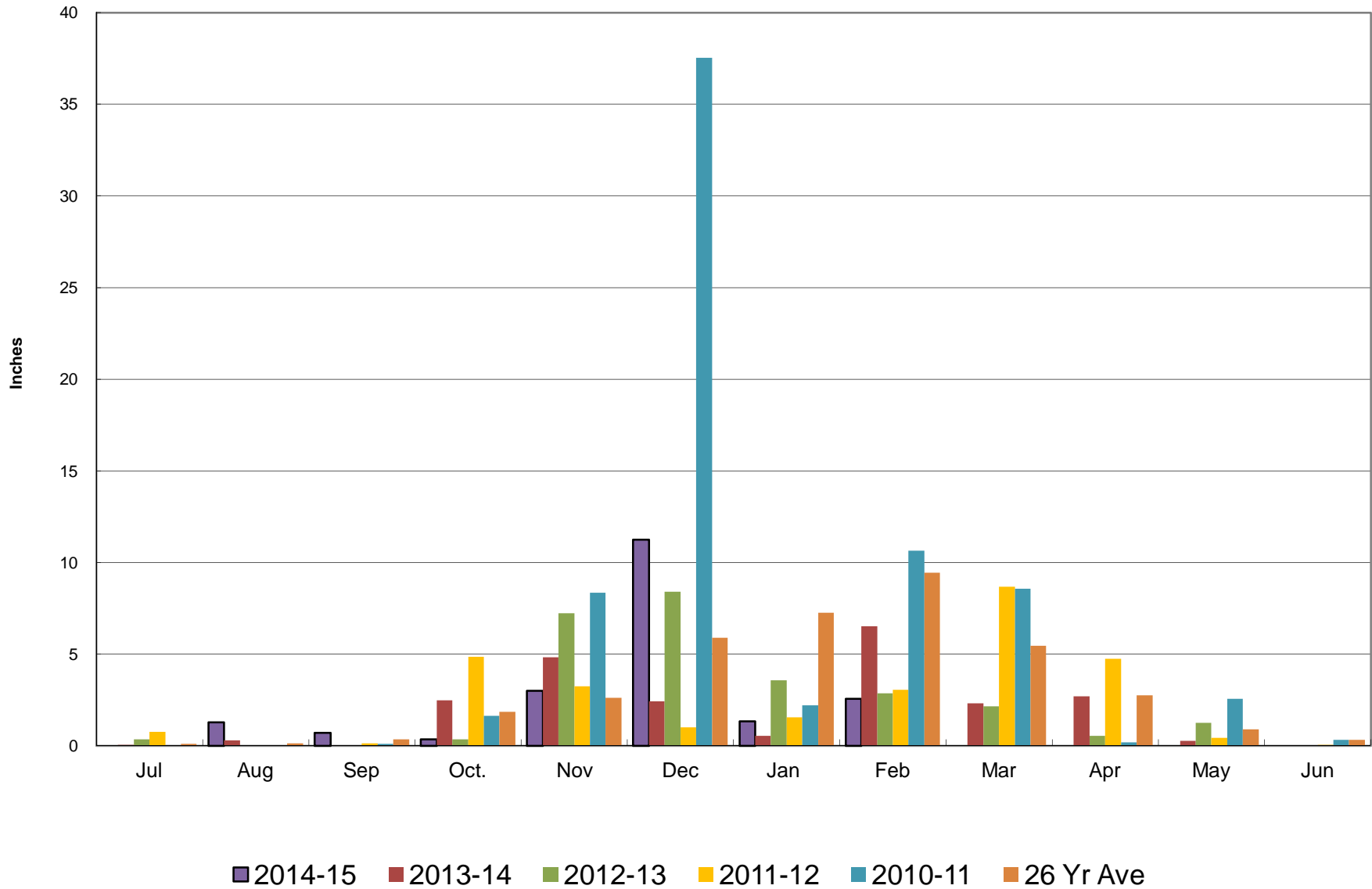
### Total Rainfall Last 12 Months



■ This Year ■ Last Year ■ Normal

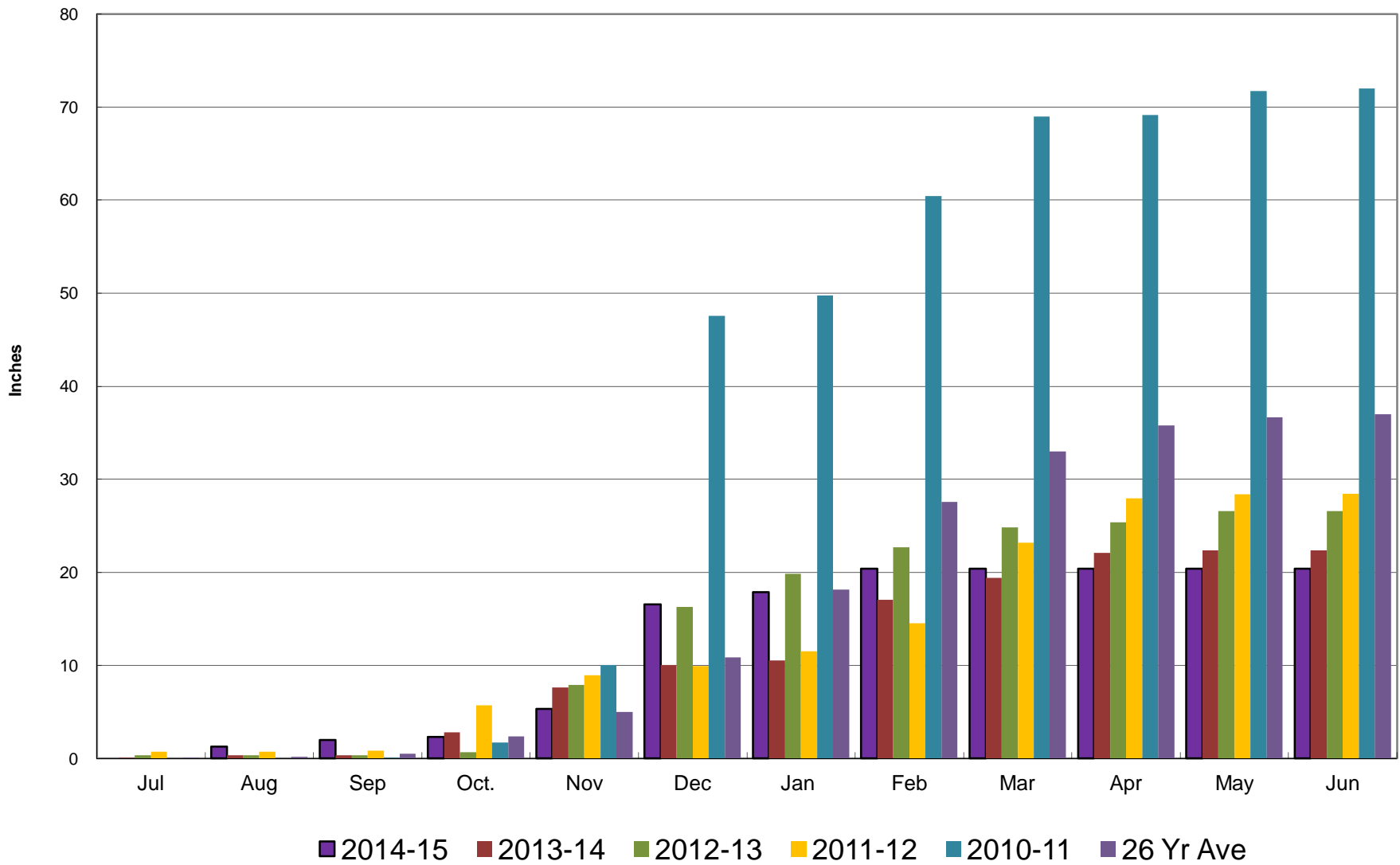
# Crestline Village Water District

## Rainfall by Month



# Crestline Village Water District

## Rainfall Cumulative





**Crestline Village Water District**  
**Change in Water Production - Cubic Feet**  
2013 to 2015

<b>2015 Production</b>	<b>Jan</b>	<b>Feb</b>	<b>Mar</b>	<b>Apr</b>	<b>May</b>	<b>Jun</b>	<b>Jul</b>	<b>Aug</b>	<b>Sep</b>	<b>Oct</b>	<b>Nov</b>	<b>Dec</b>	<b>Total</b>
Wells	891,181	834,933	0	0	0	0	0	0	0	0	0	0	1,726,114
CLAWA	1,365,576	964,211	0	0	0	0	0	0	0	0	0	0	2,329,787
<b>Total</b>	<b>2,256,757</b>	<b>1,799,144</b>	<b>0</b>	<b>0</b>	<b>0</b>	<b>0</b>	<b>0</b>	<b>0</b>	<b>0</b>	<b>0</b>	<b>0</b>	<b>0</b>	<b>4,055,901</b>

<b>2015 Cumulative</b>													
Wells	891,181	1,726,114	1,726,114	1,726,114	1,726,114	1,726,114	1,726,114	1,726,114	1,726,114	1,726,114	1,726,114	1,726,114	1,726,114
CLAWA	1,365,576	2,329,787	2,329,787	2,329,787	2,329,787	2,329,787	2,329,787	2,329,787	2,329,787	2,329,787	2,329,787	2,329,787	2,329,787
<b>Total</b>	<b>2,256,757</b>	<b>4,055,901</b>	<b>4,055,901</b>	<b>4,055,901</b>	<b>4,055,901</b>	<b>4,055,901</b>	<b>4,055,901</b>	<b>4,055,901</b>	<b>4,055,901</b>	<b>4,055,901</b>	<b>4,055,901</b>	<b>4,055,901</b>	<b>4,055,901</b>

<b>2013 Production</b>													
Wells	1,892,667	1,416,423	1,570,947	1,427,183	1,498,424	1,506,235	1,372,567	1,350,287	1,330,182	1,210,928	1,344,261	1,168,307	17,088,411
CLAWA	1,026,069	378,743	606,417	878,490	1,119,532	1,641,898	2,091,243	1,889,105	1,991,017	1,541,056	1,111,284	1,081,043	15,355,897
<b>Total</b>	<b>2,918,736</b>	<b>1,795,166</b>	<b>2,177,364</b>	<b>2,305,673</b>	<b>2,617,956</b>	<b>3,148,133</b>	<b>3,463,810</b>	<b>3,239,392</b>	<b>3,321,199</b>	<b>2,751,984</b>	<b>2,455,545</b>	<b>2,249,350</b>	<b>32,444,308</b>

<b>2013 Cumulative</b>													
Wells	1,892,667	3,309,090	4,880,037	6,307,220	7,805,644	9,311,879	10,684,446	12,034,733	13,364,915	14,575,843	15,920,104	17,088,411	17,088,411
CLAWA	1,026,069	1,404,812	2,011,229	2,889,719	4,009,251	5,651,149	7,742,392	9,631,497	11,622,514	13,163,570	14,274,854	15,355,897	15,355,897
<b>Total</b>	<b>2,918,736</b>	<b>4,713,902</b>	<b>6,891,266</b>	<b>9,196,939</b>	<b>11,814,895</b>	<b>14,963,028</b>	<b>18,426,838</b>	<b>21,666,230</b>	<b>24,987,429</b>	<b>27,739,413</b>	<b>30,194,958</b>	<b>32,444,308</b>	<b>32,444,308</b>

<b>Change in Production</b>		
Wells	(1,001,486)	(581,490)
CLAWA	339,507	585,468
<b>Total</b>	<b>(661,979)</b>	<b>3,978</b>
<b>Total (AF)</b>	<b>(15.20)</b>	<b>0.09</b>

<b>% Change</b>		
Wells	-52.91%	-41.05%
CLAWA	33.09%	154.58%
<b>Total</b>	<b>-22.68%</b>	<b>0.22%</b>

<b>Cummulative Change</b>		
Wells	(1,001,486)	(581,490)
CLAWA	339,507	585,468
<b>Total</b>	<b>(661,979)</b>	<b>3,978</b>
<b>Total (AF)</b>	<b>(15.20)</b>	<b>0.09</b>

<b>% Cummulative Change</b>		
Wells	-52.91%	-17.57%
CLAWA	33.09%	41.68%
<b>Total</b>	<b>-22.68%</b>	<b>0.08%</b>



