

Community Focus Statement A: Provide a unified downtown area that is active and thriving.

A

Action Statement A.1: Provide additional public amenities such as restrooms, seating areas, open space areas, and lighted pedestrian paths, walkways, and crosswalks in the Lake Drive area.

Benchmark: Draft a comprehensive plan or mobility plan that outlines proposed public amenity improvements in the area for review by the County with request plan is incorporated and budgeted for the installation of additional public amenities in the 5-year Capital Improvement Plan (CIP).

Champion: Crestline/Lake Gregory Chamber of Commerce

Estimated Cost: \$2 million



The City of South Lake Tahoe and El Dorado County have created a new Parks, Trails and Recreation Master Plan for the Lake Tahoe South Shore areas. The Master Plan represents a coordinated effort to align recreation resources and obtain community support. Photo source:

Amenities in areas with open space, parks, and trails can keep areas clean and modern, as well as increase the number of users. Upgrades and inclusions such as restrooms, drinking fountains, benches, and wayfinding signs can often be donated by a local business or organization or paid for with grant funding. Maintenance will be an ongoing cost for such amenities, however. The sponsorship of a particular amenity by a donor or business can encourage community buy-in and cover the cost of maintenance, and organizations such as schools, youth groups, churches, and volunteer teams can help with keeping rest areas and restrooms clean and stocked.

Providing new amenities without proper pedestrian pathways to them would not have the desired results. For this reason, the addition of amenities calls for adequate pedestrian paths/walkways that residents and visitors can use to better enjoy the community's new

additions. Preparing and adopting a comprehensive plan or a mobility plan for County review and potential adoption is away to move forward, but residents can speed up and contribute to this process in a number of ways. A strong interest expressed by residents, backed by local community groups and businesses, can show the importance of and commitment to a plan, demonstrating that the County will have support and backing to implement the plan. Ongoing input from the community regarding needs for facilities, connections to existing paths and trails, and safe streets to travel on will be invaluable to the County in best serving the needs of the area.

Beyond completing a comprehensive plan, development of new amenities, bicycle paths, and pedestrian facilities can require design, construction, operational, and maintenance costs. Table 1 includes a range of facilities and typical costs for design and construction.

Community Focus Statement A: Provide a unified downtown areas and business districts that are active and thriving.

Action Statement A.3: Encourage property owners to maintain and improve their properties (e.g. new paint, façade improvements, trash/debris clean-up).

A

Benchmark: By the end of 2017, form a beautification committee to sponsor one trash/debris cleanup event and at least one property would have initiated improvements with the help of this program.

Champion: Beautification committee

Estimated Cost:



Volunteers from Revitalize Mojave in Kern County. *Photo source:*

Attractive streets and buildings create a positive impression for visitors and show that local residents and business owners have pride in their community and respect the local environment. The Crest Forest communities can be inviting areas free of blight, litter, poor aesthetics, and poorly maintained signage if all members of the community contribute to the maintenance and beautification of their properties as well as to public areas. Improving the appearance of downtown areas is important in order to recruit new businesses and bring more customers into the area to support the existing businesses.

Organizing community members to come together to participate in events to improve their community can also help to strengthen and reinforce social ties. Members of the community can do their part to beautify the community in a number of ways, such as cleaning up trash and debris in streets and public areas, improving the presentation of

shopfront windows, and landscaping the planting strip area adjacent to their properties. While community members can individually participate in these efforts, they can also organize as a larger group to collectively come together and pool resources to help one another. For example, the community could set up a local committee to organize events and activities relating to beautification.

The Crest Forest communities are encouraged to form a local beautification committee and establish a range of tools, programs, and incentives to encourage local residents and business owners to make improvements. The committee could establish and organize events and programs such as:

- Holding a window display contest
- Organizing a street tree planting day
- Forming an Adopt-a-___ Program (e.g., bench, planter)
- Painting buildings
- Recruiting local handyworkers and volunteers willing to help with improvements
- Encouraging use of social media, such as NextDoor, and other community resources to advertise free used building materials and supplies such as paint and wood

Community Focus Statement A: Provide unified downtown areas and business districts that are active and thriving.

A

Action Statement A.5: *Coordinate and implement a clean-up program for the downtown/business district areas. Collaborate with the County to establish a consistent/compatible design theme for the downtown/business district areas.*

Benchmark: Local businesses partner with adult and youth community service organizations to host and organize quarterly cleanup events throughout the year.

Champion: downtown cleanup committee, community

Estimated Cost: \$2,000 per event

The downtown area is the heart of a community and is the place where people come together for a meal, an event, or simply to interact with their fellow community members. However, these areas are also hard to maintain and without appropriate oversight can quickly fall into disrepair and become littered with trash. In order to maintain clean downtown/business areas in the Crest Forest communities, a downtown partnership could be created that consists of interested member businesses and individuals.



The Crestline Communities Development Alliance participates in a community cleanup. Photo source:

Partnerships with the Crestline/Lake Gregory Chamber of Commerce, youth groups (such as the Boy Scouts or Girl Scouts), or nonprofits dedicated to improvement or cleanup work like Rebuilding Together Mountain Communities, Habitat for Humanity, and the Crestline Communities Development Alliance could be leveraged for quarterly, large-scale cleanup events or on an as-needed basis. Cleanup events could be organized and publicized by the partnerships. Community members can keep the Crest Forest communities clean by organizing and participating in community cleanup events, with services including sidewalk sweeping, trash and debris removal, and landscaping installation and maintenance. Business owners and neighborhood groups can assist by providing resources and supplies.

The partnerships could oversee the creation of various block-level cleanup programs, in which members of different community blocks would volunteer to clean up their part of the community. These blocks could be spearheaded by high school students in order to satisfy community service requirements or by Eagle Scouts as part of their final project.

Community Focus Statement B: Develop and improve parks and recreational facilities and services for all ages.

Action Statement B.1: Identify recreation needs, including facilities and programs, by working with residents from all age groups and abilities.

B

Benchmark: The Rim of the World Recreation and Park District, with community youth groups, identify park needs and gaps in recreational facilities and services and partner with local recreational providers to determine assistance, mutual benefit, and improvement opportunities.

Champion: Rim of the World Recreation and Park District in partnership with institutions such as schools and libraries.

Estimated Cost: \$2,500–\$3,500



Seniors engaged in active and passive recreation utilizing street furniture for people watching and a multi-use trail for walking. Photo source: Anonymous

Residents, including senior groups and youth groups, can be essential contributors to the well-being of a community and can serve as the foundations on which healthy communities are built. In order to develop and improve parks and recreational facilities and services for all ages, local youth in the Crest Forest communities should be actively engaged in identifying interests and needs. Community engagement will allow the identification and provision of recreational opportunities and facilities specifically geared toward residents in the community. Parks and recreational resources can be directed toward facilities and programs that local residents want to use, instead of wasting time and resources on facilities that end up underused.

Youth are the primary participants and users of parks and recreational facilities and programming. Large blocks of time after school, and more specifically during school vacations, offer opportunities for youth to participate in recreational programs and use parks and recreational facilities. Involving youth in the process of identifying recreation needs will result in youth having an increased stake in the Crest Forest communities' future and will likely increase youth participation in recreational programming, including sustained involvement in outdoor activities.

There are several health benefits to increasing involvement in recreation and recreational programming, especially at a time when obesity rates are at an all-time high. Physical activity can diminish the chance of disease, build self-esteem, and reduce stress. Through community engagement in recreational facility and programming development, residents can make a tangible contribution to the development of the Crest Forest communities. This will help develop the next generation of involved citizens, invested in the health and success of their communities.

Community Focus Statement B: Develop and improve parks and recreational facilities and services for all ages.

Action Statement B.2: Identify opportunities for joint-use of underused and vacant facilities to serve recreation needs.



Benchmark: The Rim of the World Recreation and Park District enters a joint-use agreement program for facilities to address park and recreation needs in the community with available sites, schedules, inspection, and replacement and repair of damages.

Champion: Rim of the World Recreation and Park District

Estimated Cost: \$5,000



Photo source:

It is difficult for communities to effectively share the use of their recreational facilities, which may include libraries, gymnasiums and other athletic facilities, playgrounds, classrooms, multipurpose rooms, and child-care facilities. A tempting solution for a lack of recreational facilities is to build additional facilities. New construction is not only expensive but often requires the use of additional land, which in a mountainous community like the Crest Forest communities is hard to secure without the destruction of environmental resources.

A joint-use program or agreement could be created to provide recreational facilities that are in the best interest of the community, its residents of all ages, and the environment. This program would allow community organizations, like the Crest Forest Senior Citizen Center and any sports teams or clubs, to enter into a partnership with the school district, the Rim of the World Recreation and Park District, and other organizations that own facilities. Developing cooperative relationships and identifying mutual-need opportunities is a cost-effective and efficient way to increase the available recreational resources in the Crest Forest communities. For example, the local elementary school has a soccer field that is used by students at recess during the day. The soccer field is unused during the evening hours. Instead of building a separate facility for an adult soccer league, the league could enter a joint-use agreement with the school to use the soccer field after school hours. The adult league saves resources by not having to finance and construct a new facility when an acceptable soccer field exists and is unused during the league's desired hours. Additional resources could instead be directed toward improving the existing soccer field, such as installing lights or purchasing new goals.

A joint-use program or agreement could be created to provide recreational facilities that

While schools could potentially serve as key joint-use partners, other community facilities may be utilized as well. A private landowner could lease open space for an archery club. A multipurpose room at a local church could be used as a classroom for a community art class. Joint-use agreements could also be made prior to development. If a school wanted to develop baseball diamonds, the school could partner with an adult softball league to generate funds and begin construction sooner, rather than if the two organizations tried to initiate the development themselves.

Community Focus Statement B: Develop and improve parks and recreational facilities and services for all ages.

Action Statement B.3: Identify opportunities to incorporate bike trails within the communities.

B

Benchmark: Conceptual plans for three new bike trails in the community are developed.

Champion: Crestline Community Development Alliance, Trail Working Group

Estimated Cost: \$300–\$500



1 William C. O'Neill Bike Path in Rhode Island. Photo source: [Pi.1415926535](https://www.flickr.com/photos/pi1415926535/)

Bike trails provide places for community members to gather and exercise, no matter their ages or abilities, along with improving community connectivity. To identify opportunities to incorporate bike trails in the Crest Forest communities, the community could map existing trails, roadways, open spaces, and easements that could be suitable for development. A community-based mapping process of physical assets can help identify easements and rights-of-way with enough space to support new trails.

There are several benefits to conducting a community-based inventory to identify existing resources. Community-based inventories provide the opportunity for residents to appreciate the value and enhance resources in the community. The Crest Forest communities can identify vacant land that would be appropriate for bicycle trails. As part of the physical asset inventory, it is important to pay attention to underused areas. Community groups or

nonprofit organizations can assist in identifying potential sites where additional facility construction would be the most cost effective and feasible.

Community Focus Statement B: Develop and improve parks and recreational facilities and services for all ages.

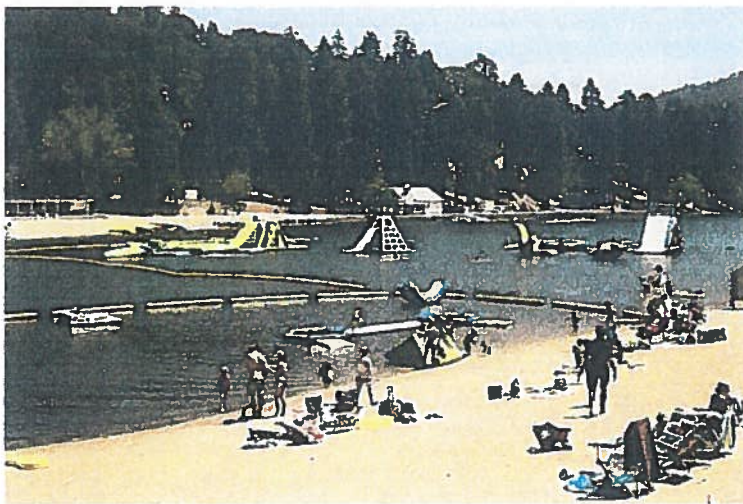
Action Statement B.5: Identify centralized open space/community gathering areas for programming of community events.



Benchmark: An online method is established to identify community gathering areas, publicize and circulate the online site, create a list of spaces, and conduct biannual review of the spaces for condition and maintenance needs.

Champion: Crestline Communities Development Alliance (CCDA)

Estimated Cost: \$100 per review event



Lake Gregory Regional Park in Crestline. Photo source:

In mountainous communities like Crest Forest, it is often difficult to identify community gathering areas because many spaces are hidden behind trees or elevation changes. In order to identify the available community gathering areas, the communities can become more aware of the spaces that are available to them and the areas that require repair or maintenance. By encouraging community members to identify these spaces, this activity would also strengthen connections to the Crest Forest communities and the environment.

Community members can be asked for feedback to identify centralized open spaces and gathering areas and to identify spaces that meet the needs of the community. Feedback could be gathered via an online poll, like MetroQuest and its map

pinning feature, or a shareable Google map on which community members can place location markers. Once these spaces are identified, a list could be maintained by a community organization like the Crestline Communities Development Alliance (CCDA). The CCDA could host biannual audit events in which they would organize a group of community members to visit each listed site and report on the condition of the space and any maintenance (as needed). This list would be available for comments during community events. Park maintenance audits can assist in the community's approach to managing resources, maintenance, and expanding parks and community spaces. The data can help with recommendations to improve parks, which play an important role in creating and sustaining healthy, livable communities in Crest Forest.

Community Statement C: Create affordable outdoor recreation activities that capitalize on the natural environment, attract visitors, and provide entertainment for residents while also reducing the associated impacts to the communities.

Action Statements C.1: Provide dumpsters and signage that encourages property disposal of trash in high-traffic visitor areas.

C

Benchmark: A volunteer citizen's waste management advisory committee that is organized has leadership, meets regularly, and continues to function and promote proper waste management for a period of at least three years.

Champion: Waste management advisory committee

Estimated Cost: \$300–\$20,000



*2Example of a regulatory "No Dumping" sign.
Photo source: Anonymous*

Maintaining clean and attractive streets and public spaces reflects community pride and encourages residents and visitors to show a greater respect for the environment. Many of the mountain communities in San Bernardino County with seasonal and tourist industries are experiencing issues with illegal dumping of household refuse, particularly in areas with limited or infrequent waste pickup services. By making legal disposal of materials convenient and illegal disposal inconvenient, communities can promote proper waste disposal.

Citizens in every community have many opportunities to work together and reduce waste. An established collection infrastructure that is free, easy, and convenient helps residents and visitors to do the right thing. The community should work with the local waste management providers (i.e., Mountain Disposal Services, Burrtec) and the County to create community drop-off sites and provide additional trash/recycling bins in highly trafficked areas. Wayfinding signage should be used to direct residents and tourists to additional waste receptacles located throughout the community. A "No Dumping" campaign can raise awareness among

tourists and residents with a focus on calling attention to environmental issues on the ground and offering practical tips on preventing waste. Educational pamphlets delivered to residences can also be effective in preventing dumping and increasing awareness of local waste management ordinances.

Potential Actions:

- Engage youth, nonprofits, residents, business owners, and neighborhood groups to embrace and promote proper waste disposal.
- Encourage residents to participate in regular community cleanup events to keep streets and open spaces free of trash and debris.
- Increase the number of trash and recycling bins along commercial corridors and in places with heavy foot traffic.
- Create community drop-off sites with dumpsters.
- Institute an annual or semiannual event to collect large or bulky items from residences and businesses.

C

Action Statements C.2: Investigate opportunities to establish designated sledding areas with parking to avoid visitors establishing undesigned sledding and parking areas.

Benchmark: Sanction areas for snow recreation with available parking and amenities, as well as a long-term plan for maintenance.

Champion: Rim of the World Recreation and Parks District

Estimated Cost:



Carson Pass SNO-PARK Information Kiosk provides information on permits and permit vendors. *Photo source:*

Sledding is a popular activity in mountain areas for both locals and visitors. However, without proper precautions, sledding can cause damage to the environment, be dangerous to people, and cause significant safety issues in the area. The location of the Crest Forest communities is easily accessible to residents in the surrounding region to drive to the area for a day of sledding. Many times, visitors create quasi-sledding areas, resulting in motorists illegally parking in turnout areas or along the side of the road where adequate space is not available. These quasi-sledding areas often occur on private property or in natural areas, causing damage to habitat. Because amenities are unavailable, significant amounts of trash and debris are left behind. By designating areas for sledding activities with amenities such as parking, restrooms,

and trash receptacles, sledding in dangerous or damaging locations and the aftermath of sledding activities can be reduced or eliminated.

Local residents can help identify areas where sledding would be suitable, as well as areas which are often used but not ideal for the activities. Presenting information on these suitable areas to the San Bernardino County Regional Parks and the Rim of the World Recreation and Park District along with possible funding mechanisms can facilitate the establishment of appropriate locations for safe and fun sledding activities, and the provision of amenities such as parking and restrooms. The Off-Highway Motor Vehicle Recreation (OHMVR) Division of California State Parks, the US Forest Service, the California Department of Transportation, and the California Highway Patrol can also be directly involved in coordinating and administering a winter recreation program that can provide safe recreation, as well as funding, through the administration of permits to access the designated recreation areas. Such funding can then go toward the maintenance of facilities and parking lots and wages for employees to staff the sites. For instance, the SNO-PARK program is coordinated and administered by the OHMVR Division of California State Parks, in conjunction with the various agencies and community agencies, to provide visitors access to snow-cleared parking lots and accommodate self-guided activities such as snowmobiling, cross-country skiing, and general snow play.

Community Focus Statement C: Create affordable outdoor recreation activities that capitalize on the natural environment, attract visitors, and provide entertainment for residents while also reducing the associated impacts to the communities.

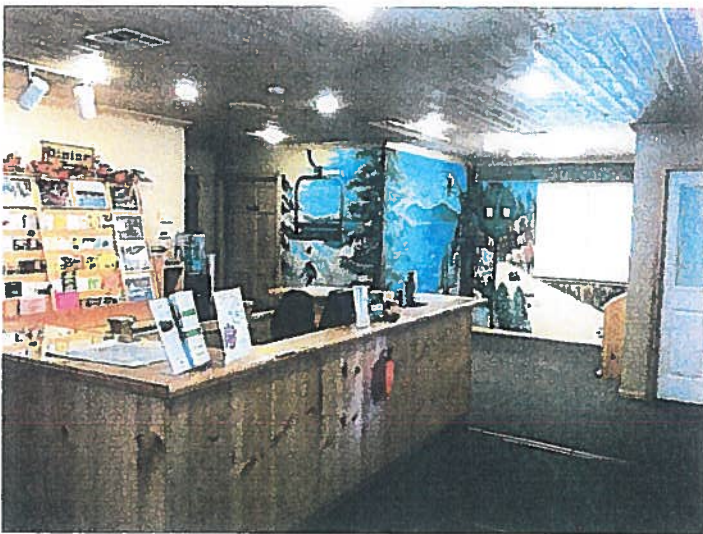
Action Statement C.3: Provide signage, maps, and other informational materials that identify trails and amenities.

C

Benchmark: Partner with Rim of the World Recreation & Parks District the County Regional Parks Advisory Commission, the Regional Parks Division, and the Crest Forest communities to develop maps, signage, and informational and educational materials to identify designated trails and outdoor recreation amenities. Update the materials on an ongoing basis as changes occur in the outdoor recreational landscape of Crest Forest.

Champion: Crest Forest Trails Committee

Estimated Cost: \$250–\$1,000



The Big Bear Visitors Center stocks literature and brochures from various lodges, restaurants, shops, recreation, services, and attractions. Big Bear map information and other useful guides are available to help visitors get around town. *Photo source:*

With their natural beauty and mountain location, the Crest Forest communities offer ample recreational activities for both residents and visitors, including hiking trails and water and mountain sports. However, the communities currently lack signage, maps, and other informational materials that identify and direct locals and visitors to nearby attractions. There are many ways in which the community can promote a high quality visitor experience while preserving the small-town atmosphere and sustaining the area's natural resources and wildlife.

To bolster tourism in the area, community organizations and volunteers could get involved to improve the availability of information regarding open trails and outdoor recreation amenities. The community can assist in researching data, identifying existing designated trails and recreation amenities, and developing maps for easy travel access. In addition, the community could publish informational brochures about the community and the surrounding

region. The community should establish a web page or create a social media presence with useful visitor information such as local attractions, places to stay, restaurants, and events. Visitors could be clearly directed to the local attractions and recreational areas through clear, well-placed signage that is both auto-oriented and pedestrian-oriented. A unified informational system with signage, maps, and visitor information would be an opportunity for the communities to promote themselves in a unique and exciting way and allow residents and visitors to enjoy what Crest Forest has to offer.

Community Focus Statement C: Create affordable outdoor recreation activities that capitalize on the natural environment, attract visitors, and provide entertainment for residents while also reducing the associated impacts to the communities.

Action Statement C.4: Develop programs and marketing materials that educate visitors on the natural environment and importance of its protection in order to foster responsible tourist behavior.

C

Benchmark: Community volunteers joined the Visitor Bureau within the Crestline/Lake Gregory Chamber of Commerce and create a virtual visitor center website including a list of tours with dates and information, and partner with local businesses to gather funding for tours and related tourism information.

Champion: Crestline and Lake Gregory Chamber of Commerce

Estimated Cost: \$6,000–\$10,000



In an effort to engage the public to protect Lake Tahoe, Keep Tahoe Blue is a campaign that educates and engages the public with the knowledge to protect the lake. *Photo source:*

Over the years, the San Bernardino Mountains have gradually developed into a tourist attraction, oriented toward family recreation in the natural environment. The County parks and recreational areas, including Lake Gregory Regional Park, are some of the Crest Forest communities' greatest assets, as the vast majority of people enjoy numerous recreational opportunities such as swimming, waterslides, non-motorized boating, fishing, and exercise trails. In addition, the communities are surrounded by the San Bernardino National Forest and are located near a forest preserve area. However, visitors can leave trash, increase pollution, and not maintain the cleanliness of the natural surroundings, which can be harmful to the environment, deteriorate the parks and recreation resources, and damage the local economy. The communities can do their part to preserve and protect the natural environment and resources. By learning about the surrounding environment and the need to protect it, visitors can become more motivated and capable of pursuing sustainable activities while enjoying all the region has to offer. Educational programs and community-based social marketing materials can

support community awareness about the natural environment and the actions everyone can take to help protect it.

These educational programs would allow visitors to learn more about the Crest Forest communities' environment and about how to conserve natural resources during their stay. Typically, these programs partner with local community-based organizations, special districts, and rental property management companies to disseminate informational/marketing pamphlets to guests and visitors at hotels, lodges, and rental properties as well as when hosting booths at conferences, concerts, festivals, and community events. These materials would include information on the history of the Crest Forest communities, current threats to its environment, and educational topic areas such as conserving natural resources, participating in responsible snow play, pursuing non-vehicle travel choices, and supporting green businesses.

Community Focus Statement E: Improve public safety.

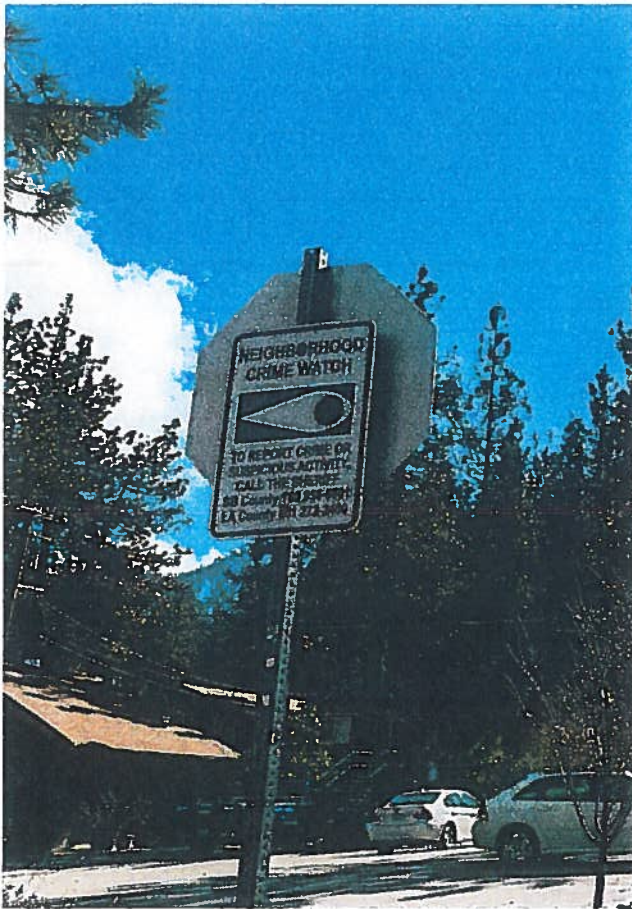
Action Statement E.1: Establish a neighborhood watch program that can be implemented throughout the communities.

E

Benchmarks: Establish neighborhood watch programs for at least 50 percent of the Crest Forest communities' residential areas, with each program continuing to function for at least five years from its inception. Ensure each program has established leadership that meets regularly (at least once a quarter), and meets with representatives from the Sheriff's Department at least once annually.

Champion: Community groups/homeowners associations

Estimated Cost: \$500–\$5,000



Neighborhood Crime Watch sign in Wrightwood, CA. Photo source: Michael Baker International

A neighborhood watch program in the Crest Forest communities is a way to help keep the communities safe by getting residents involved in crime prevention efforts. Participating residents keep watch on their neighbors and the neighborhood, decreasing the opportunities for people to commit a crime without being observed, which in turn makes the area less desirable to potential lawbreakers. Community members also promptly report suspicious activities to law enforcement officials, who can intervene and potentially stop a crime from occurring. The goal of a neighborhood watch program is not to catch criminals or to change their behavior, but to reduce the number of situations and locations where a crime could happen. The Sheriff's Department will assist in establishing a neighborhood watch program in the Crest Forest communities by meeting with the local residents. Petty crime, theft, and crimes related to the arrest and release program are current safety concerns within the Crest Forest communities.

Many strategies can help increase the effectiveness of a future neighborhood watch program in the Crest Forest communities. The San Bernardino County Sheriff's Department can assist communities in the area in starting and maintaining neighborhood watch programs by supplying critical resources and training for program participants. Homeowners associations and other existing community groups in the Crest Forest communities can provide a framework for neighbors to get together and communicate to organize and grow a neighborhood watch

program. Participants can host events such as cleanups and small-scale renovation activities, making areas nicer and more attractive. Signs posted around the communities can emphasize that a neighborhood watch program is in

Community Focus Statement E: Improve public safety.

E

Action Statement E.3: Partner with the San Bernardino County Sheriff Department, United States Forest Service, San Bernardino County Fire, local safety experts, and insurance companies to educate property owners on securing homes and businesses.

Benchmarks: Partnership established with the San Bernardino County Sheriff's Department and Code Enforcement Fire Hazard Abatement, US Forest Service, San Bernardino County Fire Department, local safety experts, and insurance companies to provide additional informational materials and services to homeowners and business owners related to community safety and security concerns.

Champion: Community groups, homeowners, and business owners

Estimated Cost: \$800–\$3,500



Defensible space around buildings and other safety practices can help protect homes and businesses from wildfires. Image source: Andrea Booher/FEMA

Property owners in the Crest Forest communities face risk from both petty crime and natural disasters, specifically wildfires. Choosing the best actions to take to enhance the security of a home or business can be overwhelming. Through engagement and education of property owners by the San Bernardino County Sheriff's and Fire departments, local safety experts, and insurance companies, individual property owners can learn the best approaches to address concerns about crime and natural hazards. These actions allow property owners to enhance the security of their home or business while simultaneously increasing the overall safety of the community.

A partnership between the Crest Forest communities and the Sheriff's and Fire departments, local safety experts, and insurance companies will provide property owners with a breadth of educational resources and local perspectives about

the best ways to enhance the security of homes and businesses. Evaluation of existing vulnerabilities in homes and businesses in the Crest Forest communities can target areas that are more susceptible to crime. Opportunities to alleviate fire risks and petty crime can be addressed in workshops on landscaping practices, retrofit suggestions, or placement of lighting and security cameras. These efforts can also target the vulnerabilities of seasonal homes, which may be especially prone to the impacts of crime and natural hazards when vacant. Safety experts can offer suggestions about technical resources, estimated costs, and anticipated benefits of safety and security updates.

Educational workshops and demonstrations, as well as reaching out to residents and business owners who have previously experienced a property crime or the impacts of a fire, can build and strengthen community partnerships and increase safety across the Crest Forest communities. By working with individual property owners to increase security, the cumulative impact of these efforts will lead to a safer, stronger community by reducing hazard risk, discouraging crime, and inspiring other home and business owners to participate.

Community Focus Statement E: Improve public safety.

Action Statement E.4: Design and promote materials to educate about identifying and reporting illegal dumping activities.

E

Benchmarks: Ensure code enforcement materials specific to the Crest Forest communities are easily accessible by all community members.

Champion: Crestline Village Water District, code enforcement committee

Estimated Cost: \$2,000–\$10,000



Community volunteers can help document and report potential code violations, such as abandoned cars. Image source: Curtis Perry.

Code violations are actions that break property-related regulations intended to protect the public's health, safety, and welfare in the Crest Forest communities. Code violations may include failing to maintain buildings to proper safety standards, abandoning vehicles, failing to clean up piles of trash on private property, and installing illegal signs, among others. In San Bernardino County, code violations are addressed by the County's Land Use Services Department's Code Enforcement section, which employs professional code enforcement staff. Community policing programs can support these efforts by recruiting local community members to be on the lookout for code violations in the Crest Forest communities and to report these violations to the Code Enforcement section.

The County's Land Use Services Department should work closely with other County departments to develop a guide that educates volunteers on how to identify and document code violations and assist in gaining compliance. Volunteer code enforcement members could help in addressing simple violations such as trash or illegal parking. This frees up professional code enforcement staff to address more serious and complicated issues, helping to conserve resources and ensure more complete coverage of the Crest Forest communities. In order to carry out these duties, volunteers must be familiar with what constitutes a code enforcement violation. Volunteer code enforcers should participate in an introductory training session to identify the primary code enforcement issues present in the Crest Forest communities, as well as other issues that come up less frequently but which volunteers should be aware of. Program organizers should also run recurring training programs to provide refreshed and updated information. Volunteers should know how to document observed suspected violations, including taking pictures and filling out any forms. While volunteers are not responsible for serving notices or otherwise confronting property owners, they should receive training in how to interact with property owners and diffuse any tensions that may arise in the course of their duties. Volunteer code enforcers should meet regularly with professional code enforcement staff and law enforcement officers, building enhanced trust and connections. In accordance with the principles of community policing, volunteers should be visible members of the community. Volunteers can participate in community events and serve as liaisons between code enforcement staff and other members of the public.

When establishing a volunteer code enforcement program, the Crest Forest communities should consider how often to provide training and what material should be covered. Volunteers will require adequate resources, including equipment needed for documenting violations and any appropriate identification. As with other community policing efforts, it is critical that the volunteers are representative of the Crest Forest communities. It is best if volunteers can participate in the program for at least six continuous months (and ideally more than a year if at all possible), as