

Crestline Village Water District Source of Supply Production Report System Loss - Last 13 Months In Cubic Feet

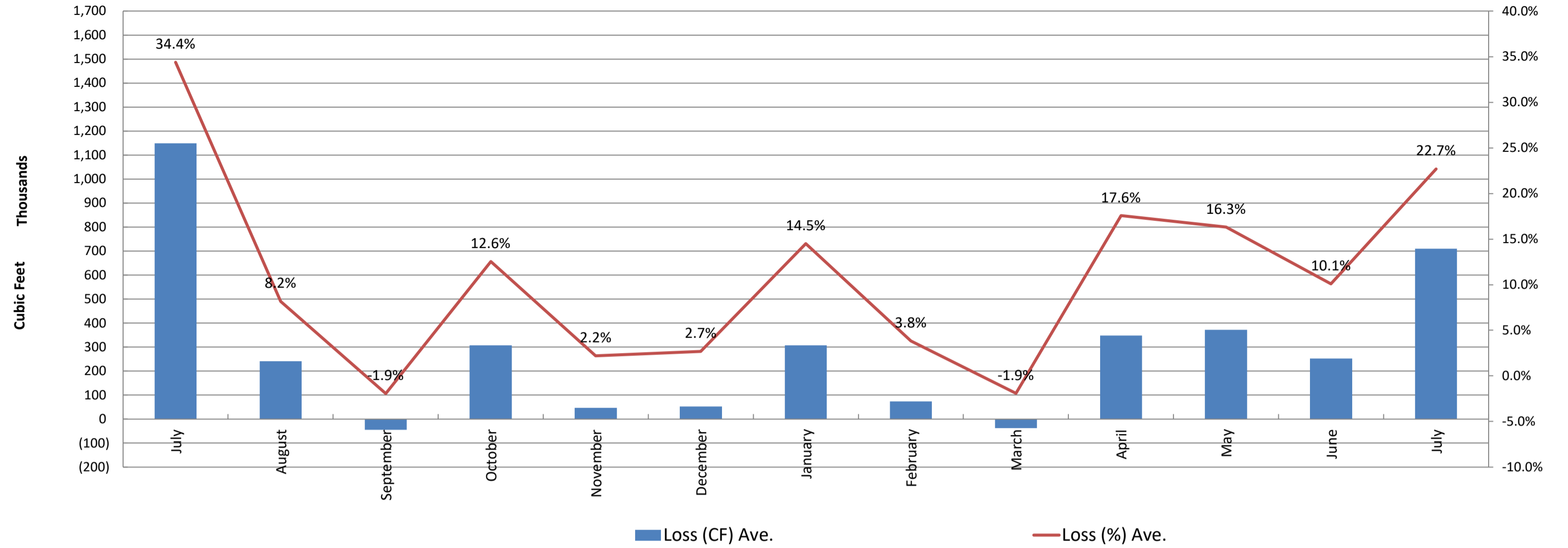
	July	August	September	October	November	December	January	February	March	April	May	June	July	Average
Sources of Supply														
Wells	1,975,165	2,008,398	1,784,165	2,035,512	1,872,134	1,719,469	1,969,762	1,771,386	1,744,554	1,954,539	1,886,560	1,777,983	2,026,665	1,908,847
Purchased Water	1,366,110	945,080	542,487	417,313	226,243	256,324	152,607	154,105	203,128	24,733	397,380	723,864	1,102,981	521,229
Adjustment to Wells *	0	0	0	0	0	0	0	0	0	0	0	0	0	0
Total Water Supplied	3,341,275	2,953,478	2,326,652	2,452,825	2,098,377	1,975,793	2,122,369	1,925,491	1,947,682	1,979,272	2,283,940	2,501,847	3,129,646	2,387,588
Water Used **														
Metered Accounts														
Crestline Area	1,014,300	1,323,900	1,188,299	1,058,601	1,013,300	972,250	835,015	850,800	794,400	810,311	903,070	1,050,819	1,110,500	994,274
Lake Gregory Area	1,187,200	1,362,500	1,171,300	1,061,800	1,042,900	944,900	1,004,900	944,815	1,222,800	817,787	1,002,913	1,131,400	1,321,300	1,093,578
Change in Storage	(12,066)	22,864	8,805	7,177	(8,424)	2,224	(28,203)	53,567	(43,075)	(19,616)	(17,506)	63,543	(16,001)	1,022
Flushing, System & Other	2,984	2,984	3,251	17,321	4,139	3,438	2,984	2,791	11,031	23,289	22,984	3,556	3,318	8,005
Accounted for Water	2,192,418	2,712,248	2,371,655	2,144,899	2,051,915	1,922,812	1,814,696	1,851,973	1,985,156	1,631,771	1,911,461	2,249,318	2,419,117	2,096,880
Month to Month Averaging ***														
System Loss (CF)	1,148,857	241,230	(45,003)	307,926	46,462	52,981	307,673	73,518	(37,474)	347,501	372,479	252,529	710,529	290,708
System Loss (%)	34.4%	8.2%	-1.9%	12.6%	2.2%	2.7%	14.5%	3.8%	-1.9%	17.6%	16.3%	10.1%	22.7%	10.9%
System Loss (GPM)	192.5	40.4	(8.1)	50.0	8.0	9.5	48.4	13.2	(6.7)	58.2	60.5	46.8	111.8	48.1
Month to Month Averaging ***														
System Loss (CF)	1,392,466	695,043	98,113	131,461	177,194	49,722	180,327	190,596	18,022	155,014	359,990	312,504	481,529	237,460
System Loss (%)	44.6%	21.3%	3.1%	5.3%	7.4%	2.4%	8.6%	9.2%	0.9%	7.8%	16.9%	13.2%	16.4%	9.4%
System Loss (GPM)	237.9	116.5	16.2	21.0	29.0	8.8	29.0	30.8	3.2	25.8	59.3	53.7	79.3	54.7
Estimated Uses														
Known leaks - Est. loss	22,481	6,048	7,171	13,530	241	0	0	0	5,329	1,952	689	1,893	54,261	8,738
Total Estimated Loses	25,465	9,032	10,422	30,851	4,380	3,438	2,984	2,791	16,360	25,241	23,673	5,449	57,579	15,788
Unaccounted for Water (CF)	1,148,857	241,230	(45,003)	307,926	46,462	52,981	307,673	73,518	(37,474)	347,501	372,479	252,529	710,529	290,708
Unaccounted For (%)	34.4%	8.2%	-1.9%	12.6%	2.2%	2.7%	14.5%	3.8%	-1.9%	17.6%	16.3%	10.1%	22.7%	10.9%
Unaccounted For (GPM)	192.5	40.4	(8.1)	50.0	8.0	9.5	48.4	13.2	(6.7)	58.2	60.5	46.8	111.8	36
Number of Days in Period	31	31	30	31	30	31	31	29	29	31	31	30	30	30

System Loss Costs	This Month	Average
Cost of System Loss:	\$25,579	\$8,549
Cost of 5% System Loss:	\$5,633	\$4,298
Amount above (below) 5% System Loss	\$19,946	\$4,251

Note: Cost is calculated at highest cost (CLAWA Rate: \$3.60/100 c.f.)

Crestline Village Water District

System Loss Last 13 Months
Month to Month



Crestline Village Water District

System Loss Last 13 Months
With Month to Month Averaging

