

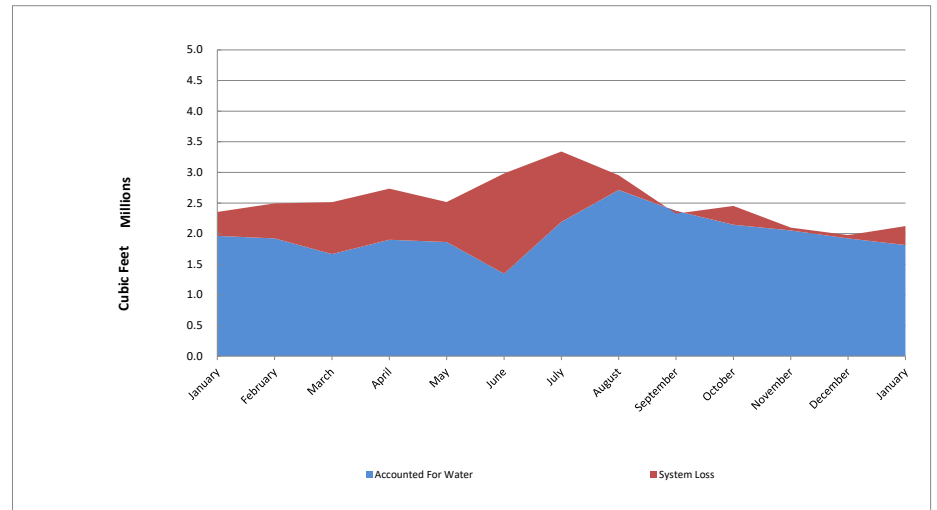
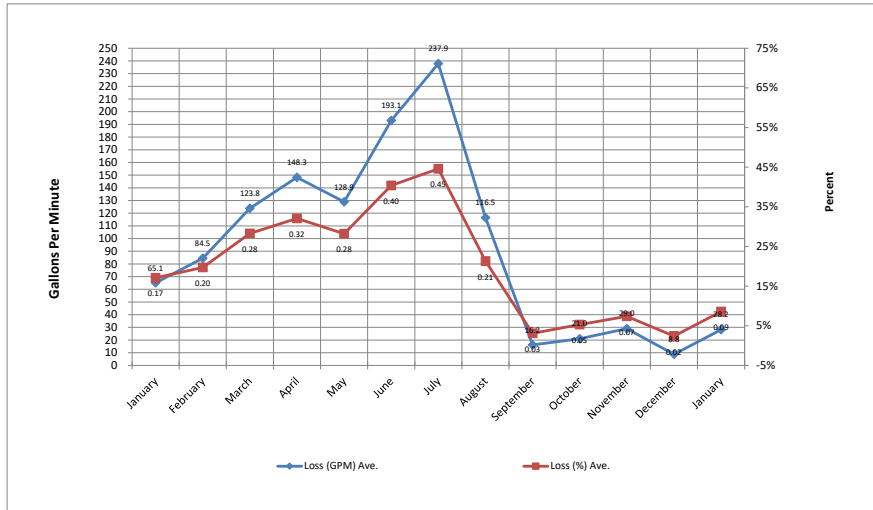
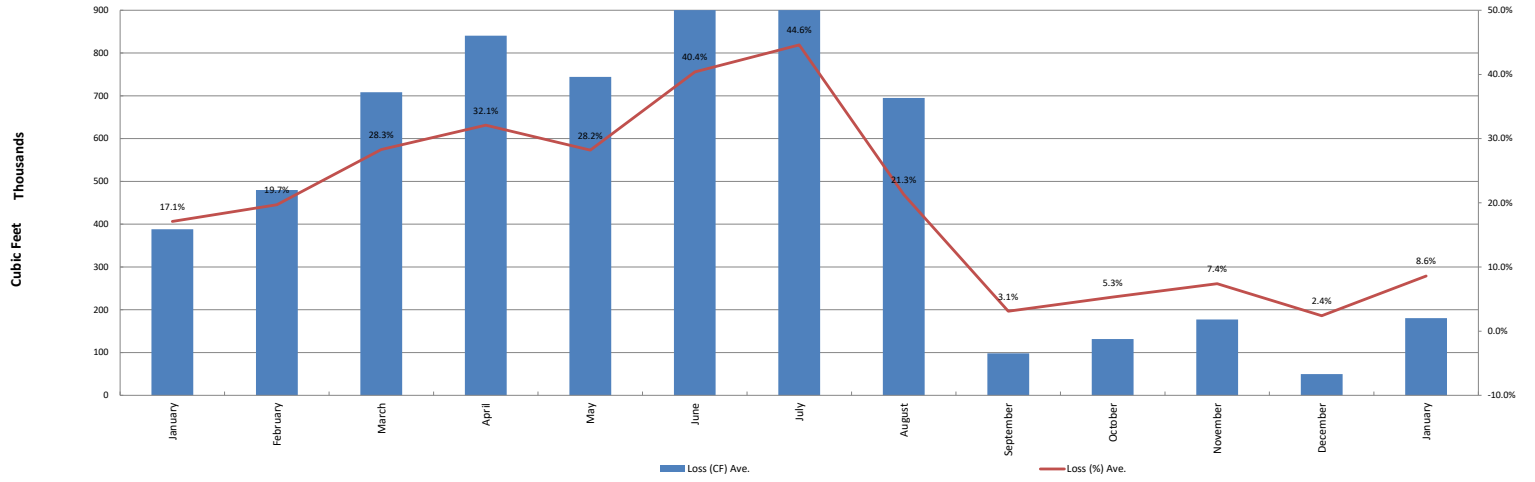
Crestline Village Water District Source of Supply Production Report System Loss - Last 13 Months In Cubic Feet

	December	January	February	March	April	May	June	July	August	September	October	November	December	January	Average
Sources of Supply															
Wells	1,037,385	1,514,151	1,322,990	1,390,399	1,691,687	1,950,283	2,197,566	1,975,165	2,008,398	1,784,165	2,035,512	1,872,134	1,719,469	1,969,762	1,608,906
Purchased Water	1,148,689	839,172	1,170,815	1,122,767	1,043,796	566,791	784,853	1,366,110	945,080	542,487	417,313	226,243	256,324	152,607	980,771
Adjustment to Wells *	0	0	0	0	0	0	0	0	0	0	0	0	0	0	0
Total Water Supplied	2,186,074	2,353,323	2,493,805	2,513,166	2,735,483	2,517,074	2,982,419	3,341,275	2,953,478	2,326,652	2,452,825	2,098,377	1,975,793	2,122,369	2,617,259
Water Used **															
Metered Accounts															
Crestline Area	843,700	844,100	916,600	809,700	950,600	840,360	1,167,040	1,014,300	1,323,900	1,188,299	1,058,601	1,013,300	972,250	835,015	982,498
Lake Gregory Area	984,200	1,096,300	980,400	884,600	923,500	988,400	179,800	1,187,200	1,362,500	1,171,300	1,061,800	1,042,900	944,900	1,004,900	992,427
Change in Storage	(53,471)	23,320	24,237	(29,692)	23,162	1,216	(497)	(12,066)	22,864	8,805	7,177	(8,424)	2,224	(28,203)	2,625
Flushing, System & Other	23,320	1,348	1,213	2,984	2,888	33,779	0	2,984	2,984	3,251	17,321	4,139	3,438	2,984	6,101
Accounted for Water	1,797,749	1,965,068	1,922,450	1,667,592	1,900,150	1,863,755	1,346,343	2,192,418	2,712,248	2,371,655	2,144,899	2,051,915	1,922,812	1,814,696	1,983,650
System Loss (CF)	388,325	388,255	571,355	845,574	835,333	653,319	1,636,076	1,148,857	241,230	(45,003)	307,926	46,462	52,981	307,673	537,695
System Loss (%)	17.8%	16.5%	22.9%	33.6%	30.5%	26.0%	54.9%	34.4%	8.2%	-1.9%	12.6%	2.2%	2.7%	14.5%	19.8%
System Loss (GPM)	67.2	63.0	106.0	141.7	155.0	102.8	283.3	192.5	40.4	(8.1)	50.0	8.0	9.5	47.0	91.6
Month to Month Averaging ***															
System Loss (CF)	328,190	388,290	479,805	708,464	840,453	744,326	1,144,698	1,392,466	695,043	98,113	131,461	177,194	49,722	180,327	553,506
System Loss (%)	14.6%	17.1%	19.7%	28.3%	32.1%	28.2%	40.4%	44.6%	21.3%	3.1%	5.3%	7.4%	2.4%	8.6%	20.1%
System Loss (GPM)	56.8	65.1	84.5	123.8	148.3	128.9	193.1	237.9	116.5	16.2	21.0	29.0	8.8	28.2	92.4
Estimated Uses															
Known leaks - Est. loss	2,298	0	2,166	12,610	15,982	2,214	3,369	22,481	6,048	7,171	13,530	241	0	0	6,601
Total Estimated Loses	2,298	1,348	3,379	15,594	18,870	35,993	3,369	25,465	9,032	10,422	30,851	4,380	3,438	2,984	11,959
Unaccounted for Water (CF)	388,325	388,255	571,355	845,574	835,333	653,319	1,636,076	1,148,857	241,230	(45,003)	307,926	46,462	52,981	307,673	537,695
Unaccounted For (%)	17.8%	16.5%	22.9%	33.7%	30.5%	26.0%	54.9%	34.4%	8.2%	-1.9%	12.6%	2.2%	2.7%	14.5%	19.8%
Unaccounted For (GPM)	67.2	63.0	106.0	141.7	155.0	102.8	283.3	192.5	40.4	(8.1)	50.0	8.0	9.5	47.0	93
Number of Days in Period	31	31	28	31	32	33	30	31	31	30	31	30	31	31	31

System Loss Costs	This Month	Average
Cost of System Loss:	\$11,076	\$19,926
Cost of 5% System Loss:	\$654	\$393
Amount above (below) 5% System Loss	\$10,522	\$19,533
<small>Note: Cost is calculated at highest cost (CLAWA Rate: \$3.60/100 c.f.)</small>		

Crestline Village Water District

System Loss Last 13 Months
With Month to



**Crestline Village Water District
Source of Supply Production Report
System Loss - Last 12 Months
In Cubic Feet**

	September	October	November	December	January '22	February	March	April	May	June	July	August	September	October	November	December	January	February	Total	Average
Sources of Supply																				
Wells	1,021,740	1,018,858	1,092,998	919,404	1,186,848	1,002,234	1,116,565	1,151,925	1,221,976	1,105,093	974,157	882,087	935,451	988,945	1,019,134	1,037,385	1,514,151	1,322,990	13,269,859	1,057,824
Purchased Water	2,100,347	1,322,486	1,164,933	1,065,094	1,135,174	813,716	957,058	988,209	1,210,614	1,638,021	2,205,749	2,150,575	1,875,935	1,494,157	1,307,994	1,148,689	839,172	170,815	15,986,988	1,395,998
Adjustment to Wells *	0	0	0	0	0	0	0	0	0	0	0	0	0	0	0	0	0	0	0	0
Total Water Supplied	3,340,793	3,122,087	2,257,931	1,984,498	2,322,022	1,815,950	2,073,623	2,140,134	2,432,590	2,743,114	3,179,906	3,032,662	2,811,386	2,483,102	2,327,128	2,186,074	2,353,323	1,493,805	29,256,847	2,537,109
Water Used **																				
Metered Accounts																				
Crestline Area	1,444,232	1,057,340	891,400	904,800	900,400	818,900	1,003,404	852,103	1,117,757	1,115,516	1,389,110	1,301,400	1,068,706	1,101,296	928,742	871,823	912,800		12,796,362	1,066,364
Lake Gregory Area	1,700,748	1,263,400	1,058,226	1,087,790	1,072,300	918,942	1,054,111	917,406	1,099,467	1,304,129	1,484,383	1,474,700	1,329,000	1,207,574	1,039,065	1,017,007	1,096,300		14,435,602	1,202,967
Change in Storage	(100,916)	(9,763)	(66,761)	70,324	(2,000)	(37,737)	2,718	33,839	(51,071)	72,829	(16,803)	(40,783)	23,503	(13,322)	24,375	(53,471)	23,320		(146,124)	(12,177)
Flushing & Other	4,920	1,504	11,708	0	11,096	0	0	688	17,147	434	0	2,984	2,984	2,984	2,984	2,984	2,984		47,466	4,205
Accounted for Water	3,048,984	2,312,481	1,894,573	2,062,914	1,981,796	1,700,105	2,060,233	1,804,016	2,183,300	2,492,908	2,856,690	2,738,301	2,424,193	2,298,532	1,995,166	1,838,343	2,035,404		27,133,306	2,261,358
System Loss (CF)	291,809	809,606	363,358	(78,416)	340,226	115,845	13,390	336,118	249,290	250,206	323,216	294,361	387,193	184,570	331,962	347,731	317,919		2,123,541	275,751
System Loss (%)	8.7%	25.9%	16.1%	-4.0%	14.7%	6.4%	0.6%	15.7%	10.2%	9.1%	10.2%	9.7%	13.8%	7.4%	14.3%	15.9%	13.5%		7.3%	10.9%
System Loss (GPM)	47.4	73.7	(7.0)	17.0	16.4	23.8	22.5	18.3	52.2	55.5	55.3	51.0	67.0	32.0	57.5	60.2	55.0		367.7	36
Month to Month Averaging ***																				
System Loss (CF)	376,149.00	550,708.00	586,482.00	142,471.00	130,905.00	228,035.00	64,617.00	174,754.00	292,704.00	249,748.00	286,711.00	308,789.00	340,777.00	285,881.00	258,266.00	339,847.00	332,825.00		3,392,073.00	
System Loss (%)	11.3%	17.3%	21.0%	6.1%	5.4%	10.5%	3.5%	8.2%	13.0%	9.7%	9.6%	9.9%	11.7%	10.6%	10.8%	15.1%	14.7%		8.5%	
System Loss (GPM)	63.6	60.6	33.4	5.0	16.7	20.1	23.2	20.4	35.2	53.8	55.4	53.1	59.0	49.5	44.7	58.8	57.6		209.3	
Estimated Uses																				
Known leaks - Est. loss	12,811	8,396	55,732	104,815	0	11,433	6,029	3,610	1,636	721	495	15,443	2,606	959	501	21,022	1,348		221,121	18,427
Total Estimated Uses	12,811	8,396	55,732	104,815	0	11,433	6,029	3,610	1,636	721	495	15,443	2,606	959	501	21,022	1,348		221,121	18,427
Unaccounted for Water (CF)	278,998	417,532	(94,782)	(345)	88,586	144,156	115,451	105,877	289,512	341,279	322,721	278,918	384,587	183,611	331,461	326,709	316,571		2,287,903	190,659
Unaccounted For (%)	8.4%	13.4%	-4.1%	0.0%	4.5%	6.2%	6.4%	5.1%	13.5%	14.0%	10.2%	9.2%	13.7%	7.4%	14.2%	15.0%	13.5%		86.7%	7.5%
Unaccounted For (GPM)	45.3	72.3	(15.4)	(0.1)	13.5	26.7	19.3	19.0	47.0	59.1	57.8	43.9	66.6	30.8	57.4	56.6	51.4		388.5	32.4
Number of Days in Period	30	29	32	28	34	28	31	29	32	30	29	33		30					367	367

NOTES:

Estimated -

* -

** -

*** -

Cost of System Loss (Monthly Average)	\$10,176
Cost of 5% System Loss (Monthly Average)	4,567
Amount above (below) 5% System Loss	\$5,609

Note: Cost is calculated at highest cost (CLAWA Rate: \$2.64/100 c.f.)