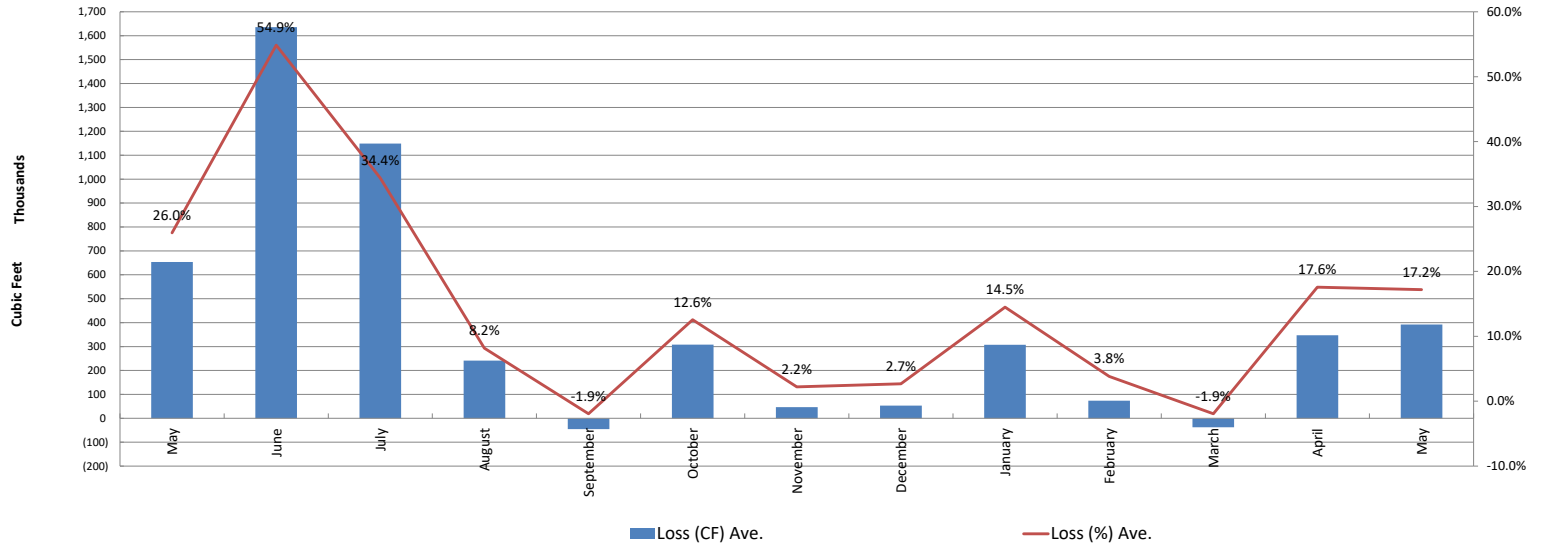


Crestline Village Water District Source of Supply Production Report System Loss - Last 13 Months In Cubic Feet

	May	June	July	August	September	October	November	December	January	February	March	April	May	Average
Sources of Supply														
Wells	1,950,283	2,197,566	1,975,165	2,008,398	1,784,165	2,035,512	1,872,134	1,719,469	1,969,762	1,771,386	1,744,554	1,954,539	1,886,560	1,822,224
Purchased Water	566,791	784,853	1,366,110	945,080	542,487	417,313	226,243	256,324	152,607	154,105	203,128	24,733	397,380	673,022
Adjustment to Wells *	0	0	0	0	0	0	0	0						0
Total Water Supplied	2,517,074	2,982,419	3,341,275	2,953,478	2,326,652	2,452,825	2,098,377	1,975,793	2,122,369	1,925,491	1,947,682	1,979,272	2,283,940	2,412,168
Water Used **														
Metered Accounts														
Crestline Area	840,360	1,167,040	1,014,300	1,323,900	1,188,299	1,058,601	1,013,300	972,250	835,015	850,800	794,400	810,311	903,070	986,090
Lake Gregory Area	988,400	179,800	1,187,200	1,362,500	1,171,300	1,061,800	1,042,900	944,900	1,004,900	944,815	1,222,800	817,787	1,002,913	988,662
Change in Storage	1,216	(497)	(12,066)	22,864	8,805	7,177	(8,424)	2,224	(28,203)	53,567	(43,075)	(19,616)	(17,506)	549
Flushing, System & Other	33,779	0	2,984	2,984	3,251	17,321	4,139	3,438	2,984	2,791	11,031	23,289	2,984	8,529
Accounted for Water	1,863,755	1,346,343	2,192,418	2,712,248	2,371,655	2,144,899	2,051,915	1,922,812	1,814,696	1,851,973	1,985,156	1,631,771	1,891,461	1,983,830
Month to Month Averaging ***														
System Loss (CF)	653,319	1,636,076	1,148,857	241,230	(45,003)	307,926	46,462	52,981	307,673	73,518	(37,474)	347,501	392,479	428,338
System Loss (%)	26.0%	54.9%	34.4%	8.2%	-1.9%	12.6%	2.2%	2.7%	14.5%	3.8%	-1.9%	17.6%	17.2%	15.6%
System Loss (GPM)	102.8	283.3	192.5	40.4	(8.1)	50.0	8.0	9.5	48.4	13.2	(6.7)	58.2	63.7	72.8
Month to Month Averaging ***														
System Loss (CF)	744,326	1,144,698	1,392,466	695,043	98,113	131,461	177,194	49,722	180,327	190,596	18,022	155,014	369,990	414,749
System Loss (%)	28.2%	40.4%	44.6%	21.3%	3.1%	5.3%	7.4%	2.4%	8.6%	9.2%	0.9%	7.8%	17.4%	14.9%
System Loss (GPM)	128.9	193.1	237.9	116.5	16.2	21.0	29.0	8.8	29.0	30.8	3.2	25.8	61.0	76.0
Estimated Uses														
Known leaks - Est. loss	2,214	3,369	22,481	6,048	7,171	13,530	241	0	0	0	5,329	1,952	689	6,024
Total Estimated Losses	35,993	3,369	25,465	9,032	10,422	30,851	4,380	3,438	2,984	2,791	16,360	25,241	3,673	14,628
Unaccounted for Water (CF)	653,319	1,636,076	1,148,857	241,230	(45,003)	307,926	46,462	52,981	307,673	73,518	(37,474)	347,501	392,479	428,338
Unaccounted For (%)	26.0%	54.9%	34.4%	8.2%	-1.9%	12.6%	2.2%	2.7%	14.5%	3.8%	-1.9%	17.6%	17.2%	15.6%
Unaccounted For (GPM)	102.8	283.3	192.5	40.4	(8.1)	50.0	8.0	9.5	48.4	13.2	(6.7)	58.2	63.7	63
Number of Days in Period	33	30	31	31	30	31	30	31	31	29	29	31	31	31
Summary														
	This Month													Average
Cost of System Loss:	\$12,510													\$14,931
Cost of 5% System Loss:	\$3,563													\$4,342
Amount above (below) 5% System Loss	\$8,947													\$10,589

Crestline Village Water District

System Loss Last 13 Months
Month to Month



Crestline Village Water District

System Loss Last 13 Months
With Month to Month Averaging

