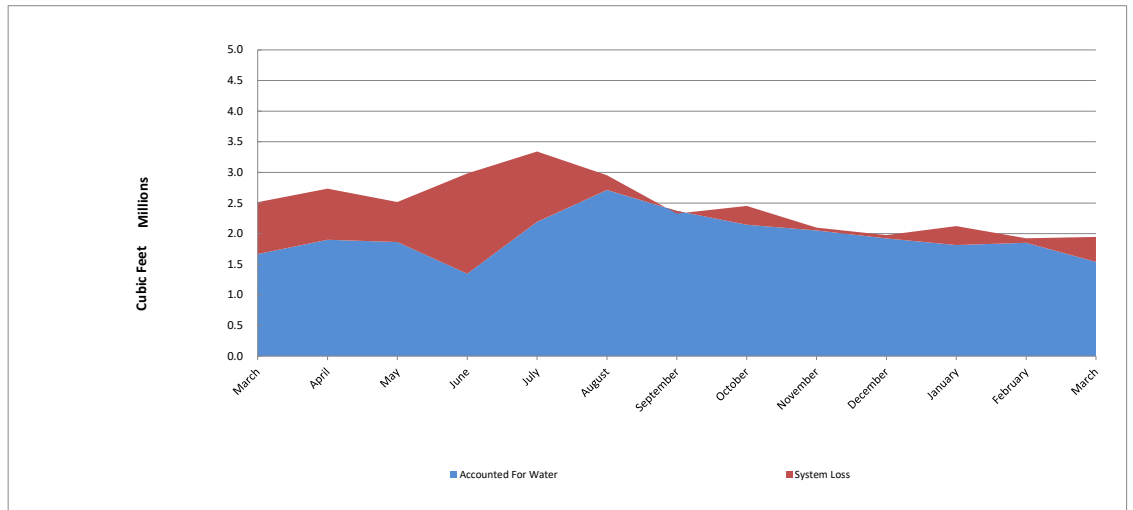
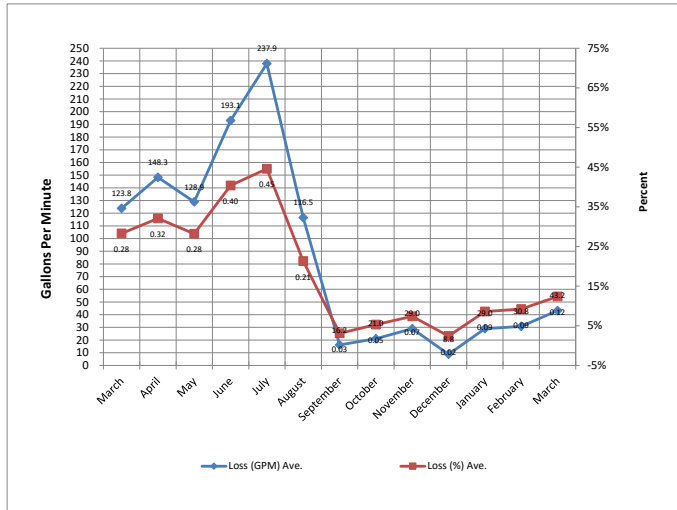
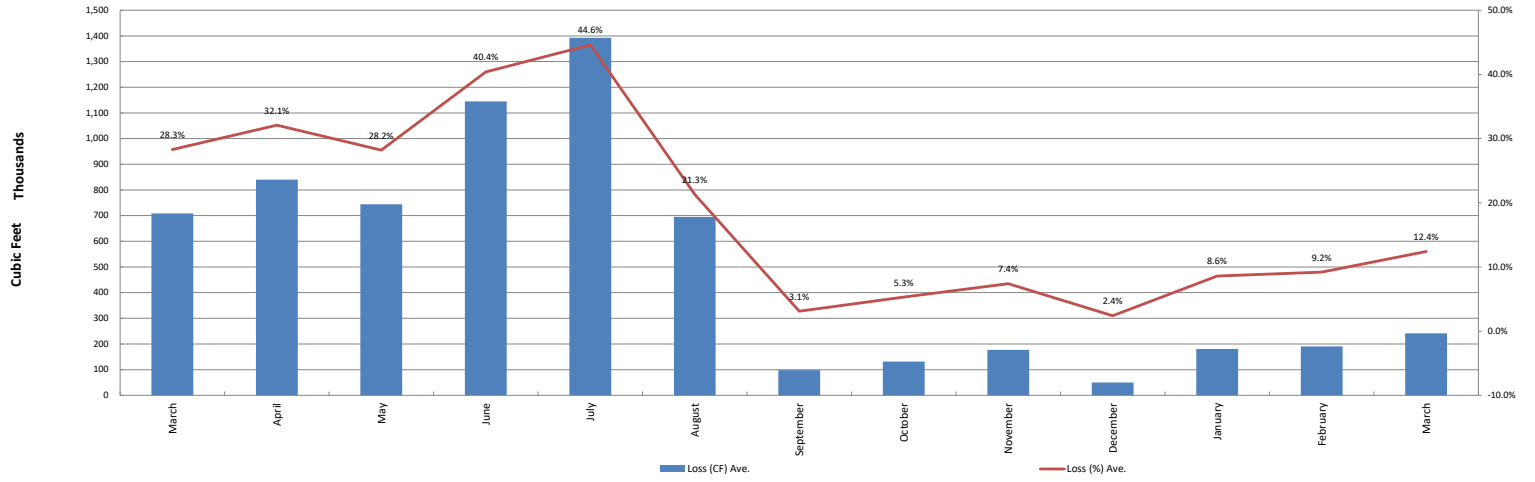


Crestline Village Water District Source of Supply Production Report System Loss - Last 13 Months In Cubic Feet

	February	March	April	May	June	July	August	September	October	November	December	January	February	March	Average
Sources of Supply															
Wells	1,322,990	1,390,399	1,691,687	1,950,283	2,197,566	1,975,165	2,008,398	1,784,165	2,035,512	1,872,134	1,719,469	1,969,762	1,771,386	1,744,554	1,822,224
Purchased Water	1,170,815	1,122,767	1,043,796	566,791	784,853	1,366,110	945,080	542,487	417,313	226,243	256,324	152,607	154,105	203,128	673,022
Adjustment to Wells *	0	0	0	0	0	0	0	0	0	0	0	0	0	0	0
Total Water Supplied	2,493,805	2,513,166	2,735,483	2,517,074	2,982,419	3,341,275	2,953,478	2,326,652	2,452,825	2,098,377	1,975,793	2,122,369	1,925,491	1,947,682	2,495,247
Water Used **															
Metered Accounts															
Crestline Area	916,600	809,700	950,600	840,360	1,167,040	1,014,300	1,323,900	1,188,299	1,058,601	1,013,300	972,250	835,015	850,800	794,400	995,443
Lake Gregory Area	980,400	884,600	923,500	988,400	179,800	1,187,200	1,362,500	1,171,300	1,061,800	1,042,900	944,900	1,004,900	944,815	776,185	975,155
Change in Storage	24,237	(29,692)	23,162	1,216	(497)	(12,066)	22,864	8,805	7,177	(8,424)	2,224	(28,203)	53,567	(43,075)	4,952
Flushing, System & Other	1,213	2,984	2,888	33,779	0	2,984	2,984	3,251	17,321	4,139	3,438	2,984	2,791	11,031	6,212
Accounted for Water	1,922,450	1,667,592	1,900,150	1,863,755	1,346,343	2,192,418	2,712,248	2,371,655	2,144,899	2,051,915	1,922,812	1,814,696	1,851,973	1,538,541	1,981,762
System Loss (CF)	571,355	845,574	835,333	653,319	1,636,076	1,148,857	241,230	(45,003)	307,926	46,462	52,981	307,673	73,518	409,141	513,485
System Loss (%)	22.9%	33.6%	30.5%	26.0%	54.9%	34.4%	8.2%	-1.9%	12.6%	2.2%	2.7%	14.5%	3.8%	21.0%	18.8%
System Loss (GPM)	106.0	141.7	155.0	102.8	283.3	192.5	40.4	(8.1)	50.0	8.0	9.5	48.4	13.2	73.3	87.9
Month to Month Averaging ***															
System Loss (CF)	479,805	708,464	840,453	744,326	1,144,698	1,392,466	695,043	98,113	131,461	177,194	49,722	180,327	190,596	241,329	529,405
System Loss (%)	19.7%	28.3%	32.1%	28.2%	40.4%	44.6%	21.3%	3.1%	5.3%	7.4%	2.4%	8.6%	9.2%	12.4%	17.9%
System Loss (GPM)	84.5	123.8	148.3	128.9	193.1	237.9	116.5	16.2	21.0	29.0	8.8	29.0	30.8	43.2	86.7
Estimated Uses															
Known leaks - Est. loss	2,166	12,610	15,982	2,214	3,369	22,481	6,048	7,171	13,530	241	0	0	0	5,329	6,844
Total Estimated Loses	3,379	15,594	18,870	35,993	3,369	25,465	9,032	10,422	30,851	4,380	3,438	2,984	2,791	16,360	13,066
Unaccounted for Water (CF)	571,355	845,574	835,333	653,319	1,636,076	1,148,857	241,230	(45,003)	307,926	46,462	52,981	307,673	73,518	409,141	501,007
Unaccounted For (%)	22.9%	33.7%	30.5%	26.0%	54.9%	34.4%	8.2%	-1.9%	12.6%	2.2%	2.7%	14.5%	3.8%	21.0%	18.6%
Unaccounted For (GPM)	106.0	141.7	155.0	102.8	283.3	192.5	40.4	(8.1)	50.0	8.0	9.5	48.4	13.2	73.3	74
Number of Days in Period	28	31	32	33	30	31	31	30	31	30	31	31	29	29	31
System Loss Costs															
	This Month														Average
	Cost of System Loss:														\$19,059
	Cost of 5% System Loss:														\$4,491
	Amount above (below) 5% System Loss														\$14,568
<small>Note: Cost is calculated at highest cost (CLAWA Rate: \$3.60/100 c.f.)</small>															

Crestline Village Water District

System Loss Last 13 Months With Month to



**Crestline Village Water District
Source of Supply Production Report
System Loss - Last 12 Months
In Cubic Feet**

	September	October	November	December	January '22	February	March	April	May	June	July	August	September	October	November	December	January	February	Total	Average
Sources of Supply																				
Wells	1,021,740	1,018,858	1,092,998	919,404	1,186,848	1,002,234	1,116,565	1,151,925	1,221,976	1,105,093	974,157	882,087	935,451	988,945	1,019,134	1,037,385	1,514,151	1,322,990	13,269,859	1,057,824
Purchased Water	2,100,347	1,322,486	1,164,933	1,065,094	1,135,174	813,716	957,058	988,209	1,210,614	1,638,021	2,205,749	2,150,575	1,875,935	1,494,157	1,307,994	1,148,689	839,172	170,815	15,986,988	1,395,998
Adjustment to Wells *	0	0	0	0	0	0	0	0	0	0	0	0	0	0	0	0	0	0	0	0
Total Water Supplied	3,340,793	3,122,087	2,257,931	1,984,498	2,322,022	1,815,950	2,073,623	2,140,134	2,432,590	2,743,114	3,179,906	3,032,662	2,811,386	2,483,102	2,327,128	2,186,074	2,353,323	1,493,805	29,256,847	2,537,109
Water Used **																				
Metered Accounts																				
Crestline Area	1,444,232	1,057,340	891,400	904,800	900,400	818,900	1,003,404	852,103	1,117,757	1,152,700	1,344,300	1,301,400	1,068,706	1,101,296	928,742	871,823	912,800		12,788,736	1,065,728
Lake Gregory Area	1,700,748	1,263,400	1,058,226	1,087,790	1,072,300	918,942	1,054,111	917,406	1,099,467	1,347,600	143,500	1,474,700	1,329,000	1,207,574	1,039,065	1,017,007	1,096,300		13,138,190	1,094,849
Change in Storage	(100,916)	(9,763)	(66,761)	70,324	(2,000)	(37,737)	2,718	33,839	(51,071)	72,829	(16,803)	(40,783)	23,503	(13,322)	24,375	(53,471)	23,320		(146,124)	(12,177)
Flushing & Other	4,920	1,504	11,708	0	11,096	0	0	668	17,147	434	0	2,984	2,984	2,984	2,984	2,984	2,984		47,466	4,205
Accounted for Water	3,048,984	2,312,481	1,894,573	2,062,914	1,981,796	1,700,105	2,060,233	1,804,016	2,183,300	2,573,563	1,470,997	2,738,301	2,424,193	2,298,532	1,995,166	1,838,343	2,035,404		25,828,268	2,152,605
System Loss (CF)	291,809	809,606	363,358	(78,416)	340,226	115,845	13,390	336,118	249,290	169,551	1,708,909	294,361	387,193	184,570	331,962	347,731	317,919		3,428,579	384,504
System Loss (%)	8.7%	25.9%	16.1%	-4.0%	14.7%	6.4%	0.6%	15.7%	10.2%	6.2%	53.7%	9.7%	13.8%	7.4%	14.3%	15.9%	13.5%		11.7%	15.2%
System Loss (GPM)	47.4	73.7	(7.0)	17.0	16.4	23.8	22.5	18.3	52.2	55.5	55.3	51.0	67.0	32.0	57.5	60.2	55.0		593.7	36
Month to Month Averaging ***																				
System Loss (CF)	376,149.00	550,708.00	586,482.00	142,471.00	130,905.00	228,035.00	64,617.00	174,754.00	292,704.00	209,420.00	939,230.00	1,001,635.00	340,777.00	285,881.00	258,266.00	339,847.00	332,825.00		4,697,110.00	
System Loss (%)	11.3%	17.3%	21.0%	6.1%	5.4%	10.5%	3.5%	8.2%	13.0%	8.2%	30.0%	31.7%	11.7%	10.6%	10.8%	15.1%	14.7%		10.7%	
System Loss (GPM)	63.6	60.6	33.4	5.0	16.7	20.1	23.2	20.4	35.2	53.8	55.4	53.1	59.0	49.5	44.7	58.8	57.6		322.3	
Estimated Uses																				
Known leaks - Est. loss	12,811	8,396	55,732	104,815	0	11,433	6,029	3,610	1,636	721	495	15,443	2,606	959	501	21,022	1,348		221,121	18,427
Total Estimated Uses	12,811	8,396	55,732	104,815	0	11,433	6,029	3,610	1,636	721	495	15,443	2,606	959	501	21,022	1,348		221,121	18,427
Unaccounted for Water (CF)	278,998	417,532	(94,782)	(345)	88,586	144,156	115,451	105,877	289,512	341,279	1,708,414	278,918	384,587	183,611	331,461	326,709	316,571		3,673,596	306,133
Unaccounted For (%)	8.4%	13.4%	-4.1%	0.0%	4.5%	6.2%	6.4%	5.1%	13.5%	14.0%	53.7%	9.2%	13.7%	7.4%	14.2%	15.0%	13.5%		130.3%	12.1%
Unaccounted For (GPM)	45.3	72.3	(15.4)	(0.1)	13.5	26.7	19.3	19.0	47.0	59.1	306.0	43.9	66.6	30.8	57.4	56.6	51.4		636.7	53.1
Number of Days in Period	30	29	32	28	34	28	31	29	32	30	29	33		30					367	367

NOTES:

Estimated -

* -

** -

*** -

Cost of System Loss (Monthly Average)	\$14,091
Cost of 5% System Loss (Monthly Average)	4,567
Amount above (below) 5% System Loss	\$9,524
Note: Cost is calculated at highest cost (CLAWA Rate: \$2.64/100 c.f.)	