

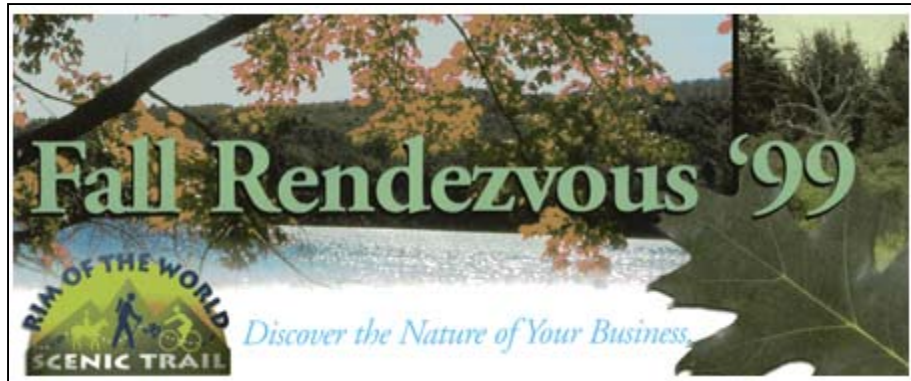
January 8, 2018

Rim of the World Recreation & Park District

Dear District:

Subject: ATP Interview

As the former secretary of the now defunct Rim of the World Trails Association, I am including documents already provided to the District that demonstrate the significance of this effort a generation later. As a new team is formed, one valuable resource I wish to add is Jim Newcomb who is in charge of the Mountain Boy Scout troops and who served on the now defunct District Foundation.



Fall Rendezvous acknowledgements include other important resources to be utilized in this effort, including:

- County Supervisors
- Big Bear
- Sierra Club, Audubon Society
- advertising and marketing
- legal
- financial

Acknowledgments

Fall Rendezvous '98 would not have been possible without the collaborative efforts and generous assistance of private and public business, the mountain communities Chambers of Commerce and Resort Association, the County of San Bernardino, the San Bernardino National Forest, and local environmental organizations.
The Steering Committee takes this opportunity to thank them.

Dave Wilson, *The Right Angle*, who designed and printed the brochure & created the slide presentations.

Keith Butler, Southern California Edison, who provided the workbooks.

The County of San Bernardino

Jon Mikels, 2nd District

Dennis Hansberger, 3rd District

Brent Rolf, GIMS

The San Bernardino National Forest

Gene Zimmerman, Supervisor

Gail van der Ble, Mountaintop District Ranger

Big Bear Chamber of Commerce

Big Bear Lake Resort Association

Crestline Resorts Chamber of Commerce

Lake Arrowhead Communities Chamber of Commerce

Running Springs Chamber of Commerce

California Trade and Commerce Agency

Sierra Club

Mountains Group

San Geronimo Chapter

Deep Creek Open Space Coalition

First Mountain Bank

San Bernardino Mountains Land Trust

San Bernardino Valley Audubon Society

Vineyard National Bank

The Steering Committee included the participation of Gail Van derBie, SBNF District Ranger, and Jerry Henderson, Program Manager of the California Trade and Commerce Agency plus various environmental and tourism organizations.

A special Thank You goes to the following for their contribution of slides to the morning and lunch slide presentations.

Don Rector
Mountaintop Ranger District
San Bernardino Mountain Land Trust
Deep Creek Open Space Coalition
Bruce Daniels
The Big Bear Lake Resort Association
Crestline Resorts Chamber of Commerce
Lake Arrowhead Communities Chamber of Commerce

STEERING COMMITTEE

Carol Sebastian, Chair
Executive Vice President - Development, Deep Creek Open Space Coalition

Bruce Daniels
Running Springs Economic Development Consultant

Cindi Fargo
Executive Director, Crestline Resorts Chamber of Commerce

Jerry Henderson
Program Manager, California Trade and Commerce Agency

Dave Leno
Executive Director, Big Bear Chamber of Commerce

Mike Scullin
President, Running Springs Chamber of Commerce

Steve Shore
Chair, Economic Development Committee, LACCC

Valerie Smith
Executive Director, Lake Arrowhead Communities Chamber of Commerce (LACCC)

Gail van der Bie
Mountaintop District Ranger, San Bernardino National Forest, USFS

Jamie Wolcott
Executive Director, Big Bear Lake Resort Association

Then U.S. Senator Barbara Boxer wrote the enclosed letter of support, which has importance relative to continued bi-partisan efforts of Senator Dianne Feinstein and Congressman Paul Cook this election year:

BARBARA BOXER
CALIFORNIA

United States Senate

HART SENATE OFFICE BUILDING
SUITE 112
WASHINGTON, DC 20510-0505
(202) 224-3553
senator@boxer.senate.gov
<http://www.senate.gov/~boxer>

COMMITTEES:
APPROPRIATIONS
BANKING, HOUSING, AND
URBAN AFFAIRS
BUDGET
ENVIRONMENT
AND PUBLIC WORKS

September 28, 1998

Fall Rendezvous '98
Post Office Box 3137
Running Springs, CA 92382

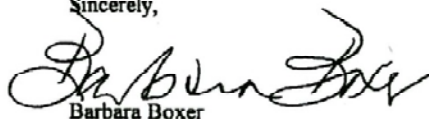
Dear Friends:

My warmest greetings as you gather for Fall Rendezvous '98. I wish I could join you for what is sure to be a fascinating discussion.

I share your excitement for today's program. By joining forces, you can chart a new and exciting course for the mountain villages. Many regions of California base their economies on eco-tourism. I can think of few better places to increase economic vitality, while retaining the natural environment, than in the San Bernardino Mountains.

I wish you a very productive day and hope you will feel free to contact my San Bernardino office if I may be of assistance to you. My best regards to all of today's participants.

Sincerely,



Barbara Boxer
United States Senator

BB:lrh

1700 MONTGOMERY STREET
SUITE 240
SAN FRANCISCO, CA 94111
(415) 403-0100

2250 EAST IMPERIAL HIGHWAY
SUITE 545
EL SEGUNDO, CA 90245
(310) 414 5700

650 CAPITOL MALL
SUITE 8544
SACRAMENTO, CA 95814
(916) 448 2787

2300 TULARE STREET
SUITE 130
FRESNO, CA 93721
(209) 497-5109

600 B STREET
SUITE 2240
SAN DIEGO, CA 92101
(619) 239 3884

210 NORTH E STREET
SUITE 210
SAN BERNARDINO, CA 92401
(909) 888 8525

PRINTED ON RECYCLED PAPER

A "Trail Overview" from the Fall Rendezvous of 1998 well describes our mission:

Trail Overview

Walking for pleasure as opposed to walking simply to get somewhere is the fundamental appeal of trails. Today Americans are hitting the trail for pleasure as never before. Hikers are hiking, bikers are biking, equestrians are riding, joggers are jogging, skiers are skiing, cultural and history and nature bluffs are exploring. All of which has made the nature and recreation based industry one of the fastest areas of growth, contributing \$40 billion annually to the U.S. economy and employing nearly 768,000 full time employees.

Recognizing this appeal, our vision is to create a continuous multi-use trail system through the San Bernardino National Forest linking the mountain area villages together with each other and the wonders of the national forest. Linkages will thread their way carefully through the urbanized areas of the communities back to the national forest. Some linkages of the trail system will lead to the discovery of something unexpected like "the narrows" at Deep Creek, while others will be loops allowing for a casual change of pace, wildflower and wildlife viewing, and include interpretive trails. Our area is full of history and some trails in the system will bring the human legacy to life. The diversity of the trails within the system will provide terrain for every taste while linking the common thread: the appeal of the outdoors.

GOALS

The goal is to work together as a true "community of interest" to leverage our limited monetary and human resources at the local, State and Federal levels to establish a "world class" trail system: To share in economic opportunity, to value this natural estate and to enhance the quality of life experiences for both visitors and local residents. To optimize the existing "service based" economy and infrastructure in our mountain communities to embrace the outdoor and ecological uniqueness of this special place.

OBJECTIVES

To build a world renown trail system that enhances the outdoor recreation experience, improve muscle powered transportation and conserve our natural environment by:

Encouraging communities to develop "pedestrian friendly" village business centers as part of village revitalization that can be used by walkers, hikers, and bicyclists;

Improving our existing roads to accommodate muscle powered use.

Developing safe alternative transportation to schools and village business centers for children, residents and customers;

The Fall Rendezvous offered the following trail options:

Potential Trail Opportunities-San Bernardino Mountains

We have lots of opportunity, but it needs improvement.

There is large demand for trails: for nature experiences, cultural experiences, for fitness, for relaxation.

We need to create loop trail systems and linkage to communities

Target markets are aging. They want more "comfort" in the outdoors.

46% of the people coming to the Forest, say they are coming for hiking;

People spend thousands of dollars to go to the Lakes District of England, Switzerland, Utah and Colorado. We have comparable opportunities here locally.

Existing National Forest Trail Systems-San Bernardino portion

***Currently 450 Miles of Hiking and Equestrian Trails**

***Long Distance Trail Opportunities-Pacific Crest Trail (miles) and Santa Ana River Trail (25 miles)**

***3.1 miles of paved bicycle trail-Northshore of Big Bear Lake**

***Nature trails-Heaps Peak Arboretum, Children's Forest, Woodland Trail, Rio Monte, Whispering Pines. in Barton Flats;**

***Wilderness Trails (100+ miles)**

Potential Trail Systems Using a Combination of: Improved existing State and County road systems, use of National Forest system roads, and new trail construction .

Crestline and Lake Silverwood Areas

Crestline Village Plan

Crest Forest Drive-east to Twin Peaks via Northroad

Crest Forest Drive-west to Pavika Ridge

Pavika Ridge to Valley of Enchantment

Seeley Trail to 4000 ' Road

Houston Creek to Miller Canyon

Dart Canyon-connector to Twin Peaks

Lake Silverwood Bike Trail

Silverwood Connection to Deer Lodge Park via Miller Canyon

Twin Peaks, Blue Jay and Lake Arrowhead Areas

Village Plans

Twin Peaks to Strawberry Peak

Strawberry Parcel and Daley Canyon

Daley Canyon-Hwy 18-Connector/Underpass

Daley Canyon to Blue Jay Village

Daley Canyon Historic Road

Dogwood Campground

Rim High School Connector

Crest Park Parcel

Crest Park to Skyforest to Heaps Peak Connector

Crest Park Parcel
Crest Park to Skyforest to Heaps Peak Connector
Lake Arrowhead to Blue Jay-Water Taxi
Lake Arrowhead to Northshore Trailhead-Water Taxi
Northshore Recreation Trail to Middle Deep Creek
Pacific Crest Trail

Running Springs/Green Valley Lake Areas

Running Springs Village Plan
Hoffman Elementary and Middle School Connector
Children's Forest
Upper Deep Creek to Green Valley Lake
Snow Valley/Rim Nordic
Children's Forest to Snow Valley
Rim Nordic to Green Valley Lake
Green Valley Lake Village Plan
Lake View Point-Crafts Peak-Butler Peak
Historic Rim of the World Dr-(Snowslide Road)
Butler Peak to Grey's Peak to Fawnskin

Big Bear Valley Area

Fawnskin Village Plan
Fawnskin to Cougar Crest
Cougar Crest to Discovery Center
Discovery Center to Alpine Pedal Path
Alpine Pedal Path to Stanfield Marsh
Stanfield Boardwalk
Stanfield to China Gardens
Big Bear Lake Village
Aspen Glen to Skyline Drive
Snow Summit to Skyline Drive
Clarks Grade Connector to Seven Oaks

Barton Flats

Seven Oaks to Santa Ana River Trail
Santa Ana River Trail
San Geronio Wilderness Trails
Wilderness Trails Connector to Forest Falls (non-mechanize

Motorized Opportunities-

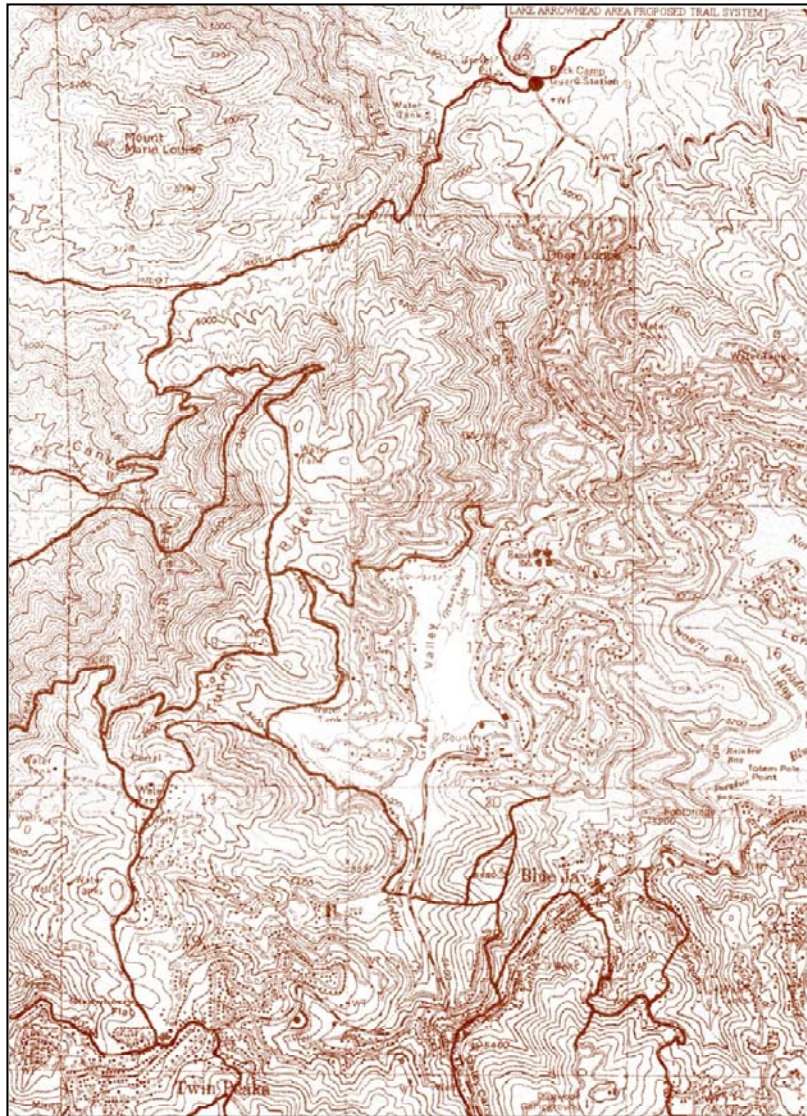
Existing Forest Plan Opportunities
Proposed Forest Plan Amendment
Dual Sport Motorcycle Opportunities
Sport Utility Vehicles

The U.S. Forest Service provided the enclosed and other trail maps that are in need of updating and revision a generation later:

LAKE ARROWHEAD/MCKAY PARK



BLUE JAY – GRASS VALLEY



CRESTLINE/LAKE GREGORY



CRESTLINE VALLEY OF ENCHANTMENT/CEDARPINES PARK



RIM OF THE WORLD
National Scenic Trail System

by Nancy Lucas

The development of a cross-mountain trail system in, around and through the San Bernardino National Forest is getting closer and closer to becoming a reality. The community of Running Springs has received the first grant earmarked for this outstanding project.

Joining hands to unite the mountain top are members of the Rim of the World Trails Association, County of San Bernardino, San Bernardino National Forest & Associates, Chambers of Commerce from Crestline/Lake Gregory, Big Bear, Lake Arrowhead and Running Springs, Big Bear Resorts Association, Soroptimists International of Running Springs, Rim of the World School District, Deep Creek Open Space Coalition, Children's Forest Association, San Bernardino Valley Audubon Society and The Sierra Club.

This planned trail system will extend from Silverwood Lake to Forest Falls, providing a variety of recreational opportunities for local residents and visitors while preserving the natural resources of one of the most intensively utilized national forests in the nation.

Neglected footpaths and dirt roads will be converted into neighborhood trails, providing safe transportation alternatives for children and adults. This major network of long and short interconnecting trails will be used for walking, hiking, running, mountain bikes and equestrian recreation.



Destination trails will be directed to historic and cultural sites with special emphasis on the accessibility for handicapped users. Destination recreation areas will include: skiing, camping, fishing, trailheads and the scenic 'Narrows' on Deep Creek. A special Front County Trail will provide a necessary fire

(Continued on page 55)

The Grinder Pizza House
Best Pizza On the Mountain!


***TRAIL SYSTEM** *(Continued from page 37)*

break for communities located at the top of canyons. Local water districts will construct a greenbelt system along the trail using recaptured ground water from a no-net-loss treatment irrigation process.

Discovery Centers will be designed in central locations providing interpretive and informational material, way-side exhibits and educational programs. Those using the trail system will be encouraged to use trail etiquette and enjoy

an increased awareness and knowledge of the environment and natural processes, as well as the cultural, natural and human history of the area.

The first phase of the trail system will begin soon in Running Springs. With funding received in a timely manner the network of trails could be completed within five years. For more information call 867-5879.



On the Mountain • DECEMBER/JANUARY 1999 • 55

I am scheduled to make a presentation to the Crestline Village Water District and am awaiting responses from other organizations.

Respectfully submitted,

Bruce Cort Daniels, Citizen Volunteer