

Crestline Village Water District
Change in Water Production - Cubic Feet
 2020 vs 2023-24

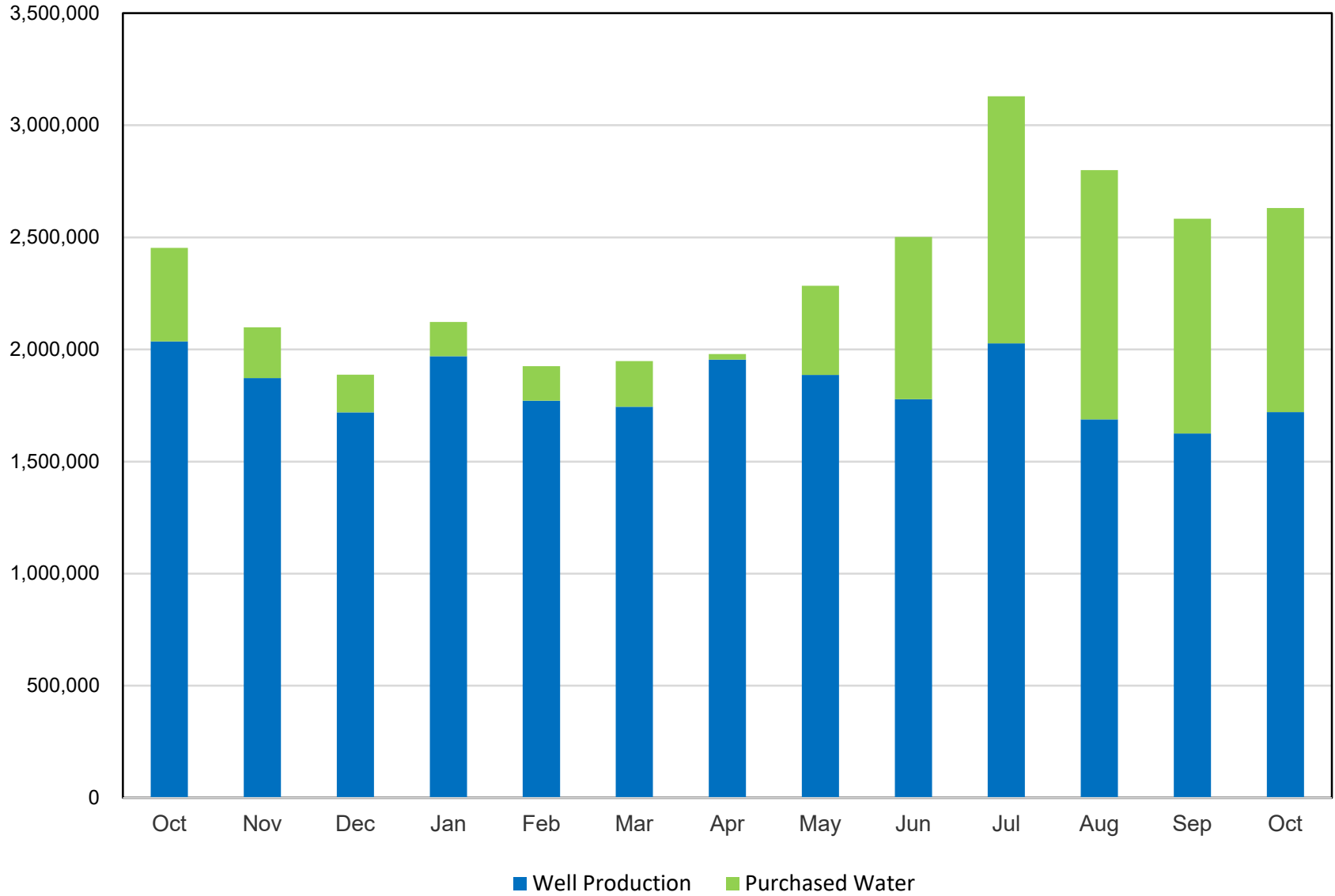
2023-24 Production	Aug	Sep	Oct	Nov	Dec	Jan	Feb	Mar	Apr	May	Jun	Jul	Aug	Sep	Oct	Average
Wells	2,008,398	1,784,165	2,035,512	1,872,134	1,719,469	1,969,762	1,771,386	1,744,554	1,954,539	1,886,560	1,777,983	2,026,665	1,687,949	1,625,304	1,720,212	1,813,043
CLAWA	945,080	542,487	417,313	226,243	256,324	152,607	154,105	203,128	24,733	397,380	723,864	1,102,981	1,112,309	957,335	910,316	518,444
Total	2,953,478	2,326,652	2,452,825	2,098,377	1,975,793	2,122,369	1,925,491	1,947,682	1,979,272	2,283,940	2,501,847	3,129,646	2,800,258	2,582,639	2,630,528	2,331,487
2020 Production																
Wells	1,863,039	1,724,448	1,520,142	1,573,711	1,397,987	1,790,808	1,606,207	1,837,581	1,922,894	1,936,457	2,069,986	1,740,467	1,863,039	1,724,448	1,520,142	1,748,644
CLAWA	1,490,709	1,410,963	1,269,277	709,571	795,000	357,741	340,374	230,214	152,380	712,554	978,249	1,827,648	1,490,709	1,410,963	1,269,277	856,223
Total	3,353,748	3,135,411	2,789,419	2,283,282	2,192,987	2,148,549	1,946,581	2,067,795	2,075,274	2,649,011	3,048,235	3,568,115	3,353,748	3,135,411	2,789,419	2,604,867
Change in Production																
Wells	145,359	59,717	515,370	298,423	321,482	178,954	165,179	(93,027)	31,645	(49,897)	(292,003)	286,198	(175,090)	(99,144)	200,070	64,399
CLAWA	(545,629)	(868,476)	(851,964)	(483,328)	(538,676)	(205,134)	(186,269)	(27,086)	(127,647)	(315,174)	(254,385)	(724,667)	(378,400)	(453,628)	(358,961)	(337,780)
Total	(400,270)	(808,759)	(336,594)	(184,905)	(217,194)	(26,180)	(21,090)	(120,113)	(96,002)	(365,071)	(546,388)	(438,469)	(553,490)	(552,772)	(158,891)	(273,380)
Total (AF)	(9.19)	(18.57)	(7.73)	(4.24)	(4.99)	(0.60)	(0.48)	(2.76)	(2.20)	(8.38)	(12.54)	(10.07)	(12.71)	(12.69)	(3.65)	(6.28)
Crestline Village Water District																
Change in Total Water Consumption - Cubic Feet																
2023-24 Total Consumption																
Cubic Feet	2,686,400	2,359,599	2,120,401	2,056,200	1,917,150	1,839,915	1,795,615	1,570,585	1,739,690	1,905,983	2,182,219	2,431,800	2,539,780	2,315,120	2,331,800	24,625,857
Total	2,686,400	2,359,599	2,120,401	2,056,200	1,917,150	1,839,915	1,795,615	1,570,585	1,739,690	1,905,983	2,182,219	2,431,800	2,539,780	2,315,120	2,331,800	24,625,857
2020 Total Consumption																
Cubic Feet	3,005,506	3,281,600	2,889,200	2,638,000	2,114,721	2,147,430	1,973,581	1,859,473	1,972,980	2,189,010	2,668,700	2,833,100	3,005,506	3,281,600	2,889,200	29,573,301
Total	3,005,506	3,281,600	2,889,200	2,638,000	2,114,721	2,147,430	1,973,581	1,859,473	1,972,980	2,189,010	2,668,700	2,833,100	3,005,506	3,281,600	2,889,200	29,573,301
Change in Total Consumption																Average
Cubic Feet	(319,106)	(922,001)	(768,799)	(581,800)	(197,571)	(307,515)	(177,966)	(288,888)	(233,290)	(283,027)	(486,481)	(401,300)	(465,726)	(966,480)	(557,400)	(412,287)
Cubic Feet	(319,106)	(922,001)	(768,799)	(581,800)	(197,571)	(307,515)	(177,966)	(288,888)	(233,290)	(283,027)	(486,481)	(401,300)	(465,726)	(966,480)	(557,400)	(412,287)
Total (AF)	(7.33)	(21.17)	(17.65)	(13.36)	(4.54)	(7.06)	(4.09)	(6.63)	(5.36)	(6.50)	(11.17)	(9.21)	(10.69)	(22.19)	(12.80)	(9.46)
% Change																
Cubic Feet	-10.62%	-28.10%	-26.61%	-22.05%	-9.34%	-14.32%	-9.02%	-15.54%	-11.82%	-12.93%	-18.23%	-14.16%	-15.50%	-29.45%	-19.29%	-15.97%
Total	-10.62%	-28.10%	-26.61%	-22.05%	-9.34%	-14.32%	-9.02%	-15.54%	-11.82%	-12.93%	-18.23%	-14.16%	-15.50%	-29.45%	-19.29%	-15.97%

Crestline Village Water District
Gallons Per Capita Daily Calculation

	<u>Aug</u>	<u>Sep</u>	<u>Oct</u>	<u>Nov</u>	<u>Dec</u>	<u>Jan</u>	<u>Feb</u>	<u>Mar</u>	<u>Apr</u>	<u>May</u>	<u>Jun</u>	<u>Jul</u>	<u>Aug</u>	<u>Sep</u>	<u>Oct</u>	<u>Average</u>
2023-24																
Residential Services with 92325 Zip	3,863	3,863	3,863	3,863	3,863	3,863	3,863	3,863	3,863	3,863	3,863	3,863	3,863	3,863	3,863	3,863
People per Household	2.47	2.47	2.47	2.47	2.47	2.47	2.47	2.47	2.47	2.47	2.47	2.47	2.47	2.47	2.47	2.47
Est. Full-Time Population	9,542	9,542	9,542	9,542	9,542	9,542	9,542	9,542	9,542	9,542	9,542	9,542	9,542	9,542	9,542	9,542
Days Per Month	31	30	31	30	31	31	29	31	30	31	30	31	31	30	31	31
Gallons Water Consumed	20,094,272	17,649,801	15,860,599	15,380,376	14,340,282	13,762,564	13,431,200	11,747,976	13,012,881	14,256,753	16,322,998	18,189,864	18,997,554	17,317,098	17,441,864	15,350,118
92325 Residential Water Usage (CF)	2,167,300	1,945,800	1,769,000	1,754,500	1,668,200	1,665,965	1,622,800	1,428,400	1,569,590	1,556,810	1,886,700	2,026,100	2,290,100	2,146,500	1,917,100	1,765,330
% Residential Water	80.7%	82.5%	83.4%	85.3%	87.0%	90.6%	90.4%	91.0%	90.2%	81.7%	86.5%	83.3%	90.2%	92.7%	82.2%	86.83%
Gallons Per Capita Daily - 2022/23	67.93	61.66	53.62	53.73	48.48	46.53	48.54	39.72	45.46	48.20	57.02	61.49	64.22	60.49	58.96	52.29
R - Gallons Per Capita Daily - 2022/23	54.81	50.84	44.73	45.85	42.18	42.13	43.87	36.12	41.01	39.37	49.30	51.24	57.91	56.09	48.48	45.82
2020																
Residential Services with 92325 Zip	3,863	3,863	3,863	3,863	3,863	3,863	3,863	3,863	3,863	3,863	3,863	3,863	3,863	3,863	3,863	3,863
People per Household	2.47	2.47	2.47	2.47	2.47	2.47	2.47	2.47	2.47	2.47	2.47	2.47	2.47	2.47	2.47	2.47
Est. Full-Time Population	9,542	9,542	9,542	9,542	9,542	9,542	9,542	9,542	9,542	9,542	9,542	9,542	9,542	9,542	9,542	9,542
Days Per Month	31	30	31	30	31	31	29	31	30	31	30	31	31	30	31	31
Gallons Water Consumed	22,481,185	24,546,368	21,611,216	19,732,240	15,818,113	16,062,776	14,762,386	13,908,858	14,757,890	16,373,795	19,961,876	21,191,588	22,481,185	24,546,368	21,611,216	18,434,024
92325 Residential Water Usage (CF)	2,551,906	2,752,100	2,421,300	2,219,900	1,910,021	1,846,800	1,735,931	1,562,890	1,715,180	1,967,800	2,263,800	2,357,300	2,551,906	2,752,100	2,752,100	25,304,928
% Residential Water	84.9%	83.9%	83.8%	84.2%	90.3%	86.0%	88.0%	84.1%	86.9%	89.9%	84.8%	83.2%	84.9%	83.9%	95.3%	85.83%
Gallons Per Capita Daily - 2020	76.00	85.75	73.06	68.93	53.48	54.30	53.35	47.02	51.55	55.35	69.73	71.64	76.00	85.75	73.06	63.35
R - Gallons Per Capita Daily - 2020	64.53	71.91	61.23	58.01	48.30	46.70	46.93	39.52	44.82	49.76	59.15	59.61	64.53	71.91	69.59	54.90
Change R-GPCD 2020-2023	(9.73)	(21.07)	(16.50)	(12.16)	(6.12)	(4.57)	(3.06)	(3.40)	(3.80)	(10.39)	(9.85)	(8.38)	(6.62)	(15.82)	(21.11)	(9.09)
% Change	-15.07%	-29.30%	-26.94%	-20.96%	-12.66%	-9.79%	-6.51%	-8.60%	-8.49%	-20.88%	-16.66%	-14.05%	-10.26%	-22.00%	-30.33%	-16.55%

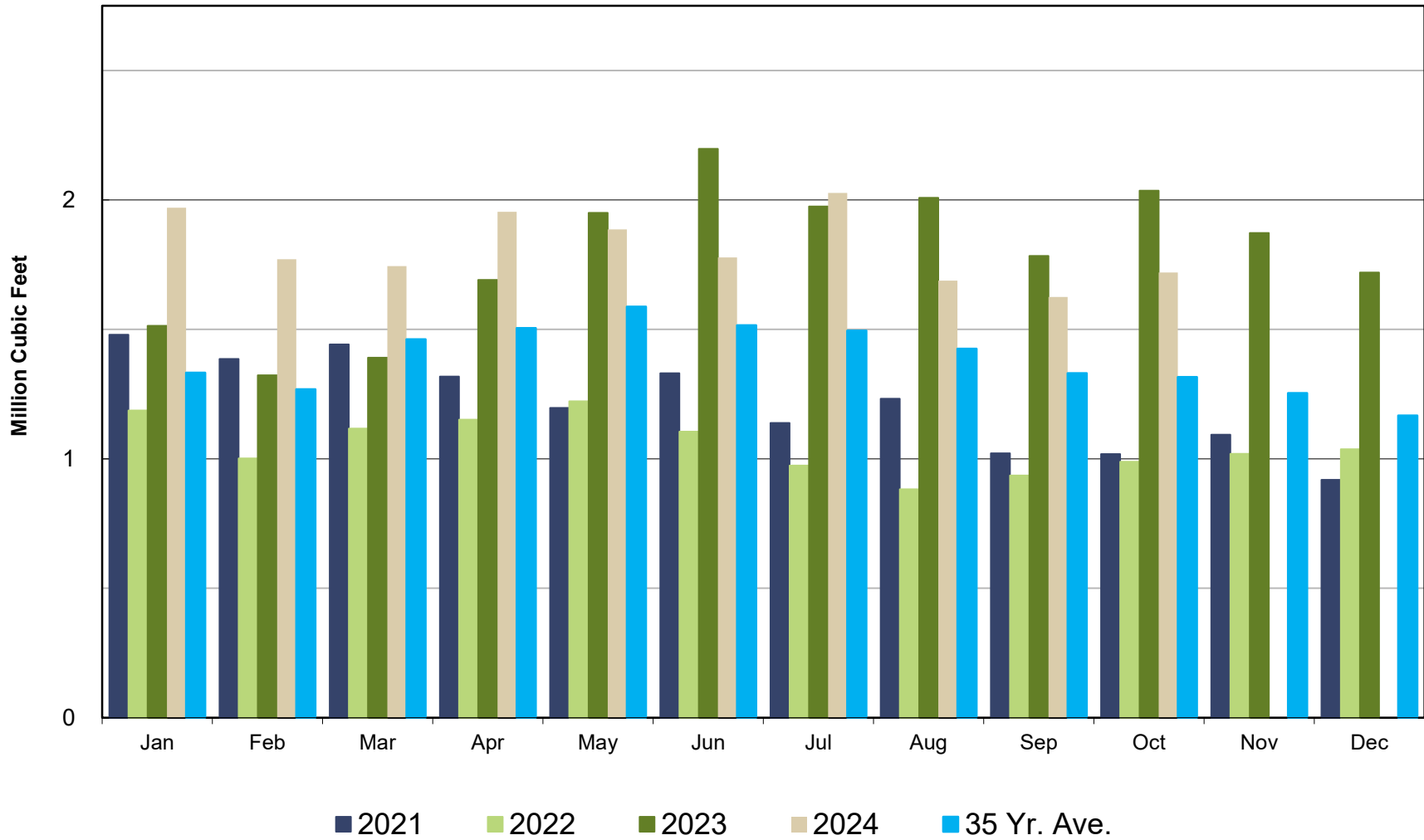
Crestline Village Water District

Water Sources - Last 13 Months in Cubic Feet October 2023 - October 2024



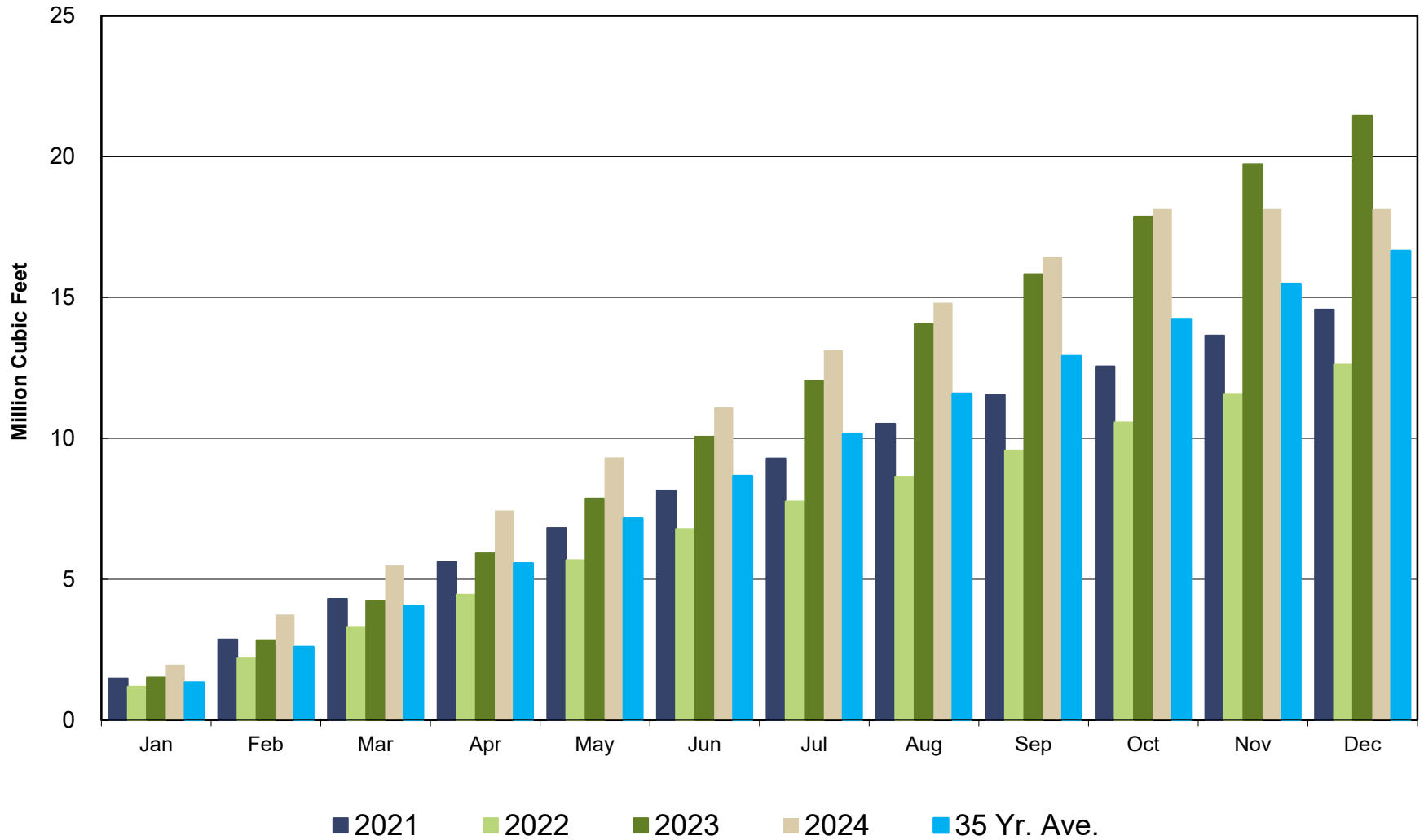
Crestline Village Water District

Well Production by Month Comparison



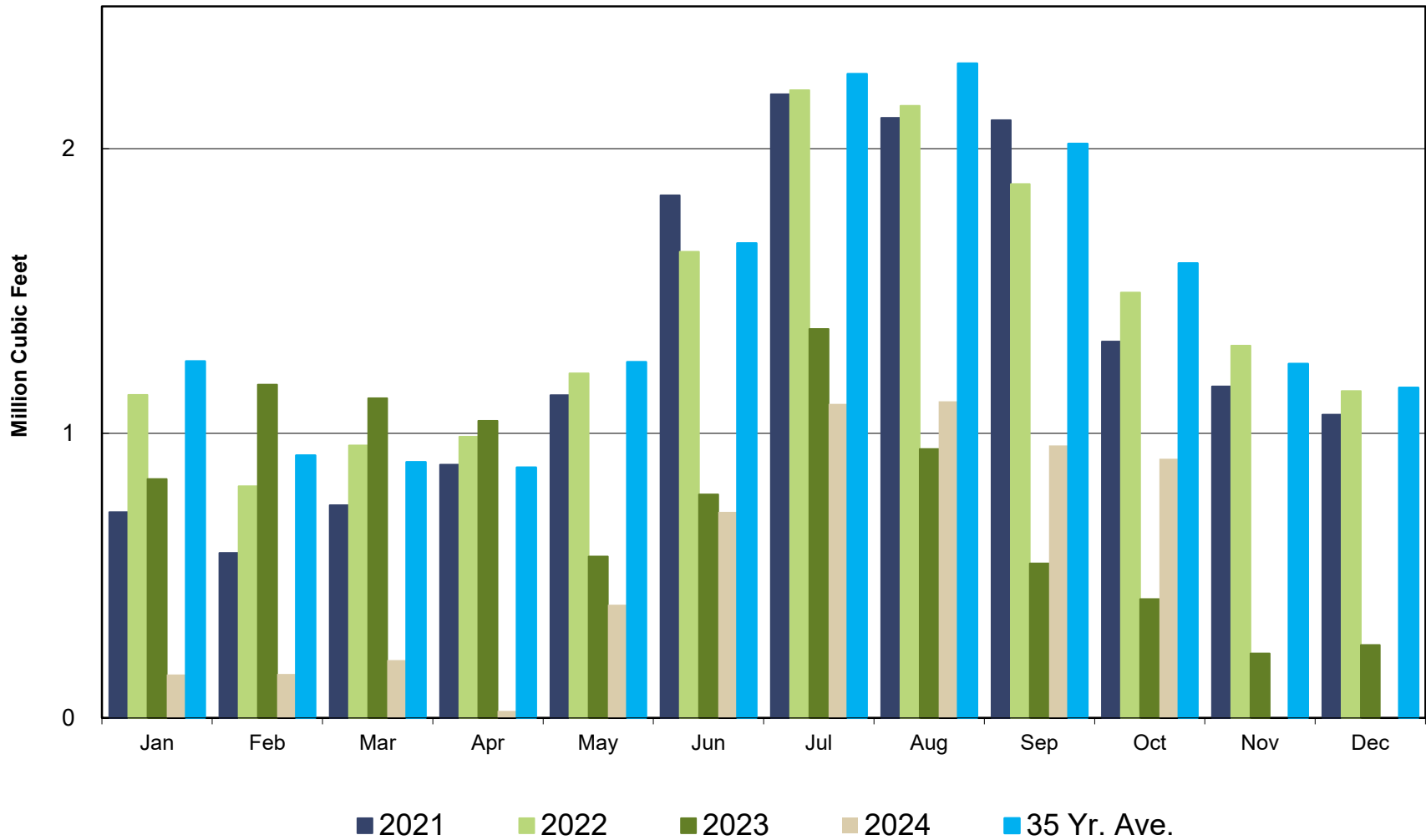
Crestline Village Water District

Well Production by Month Cumulative



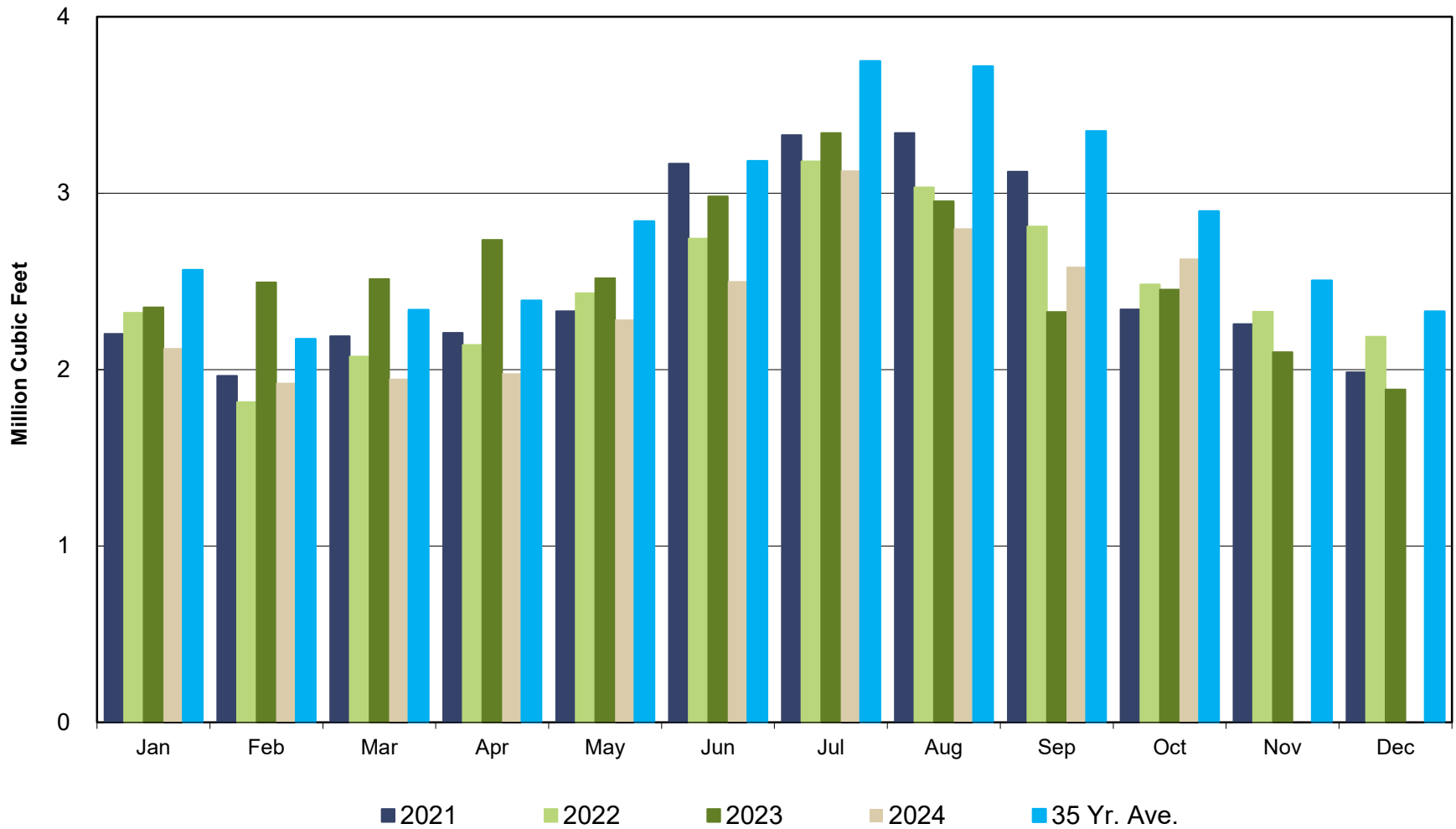
Crestline Village Water District

Purchased Water by Month Comparison



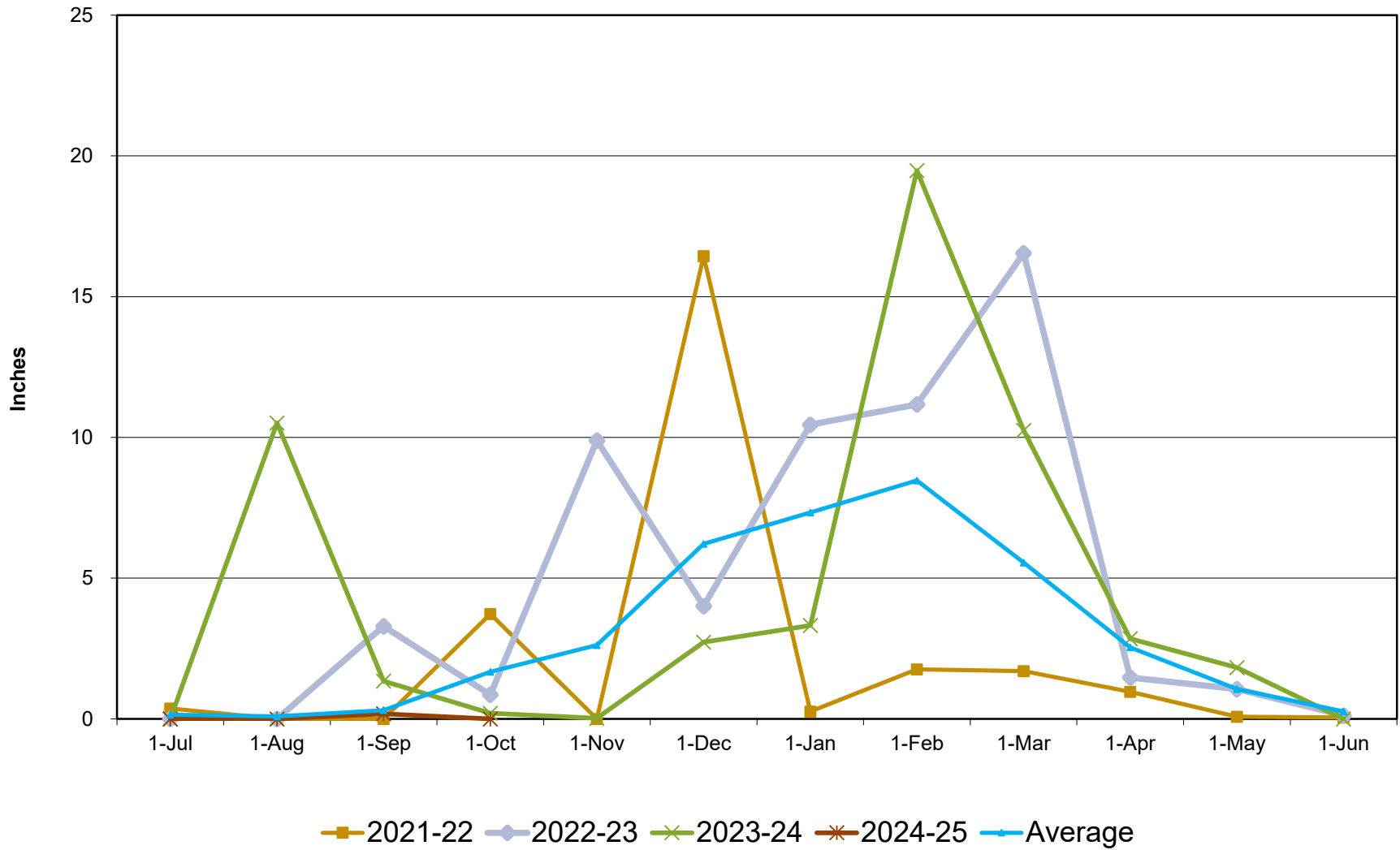
Crestline Village Water District

Total Production by Month Comparison



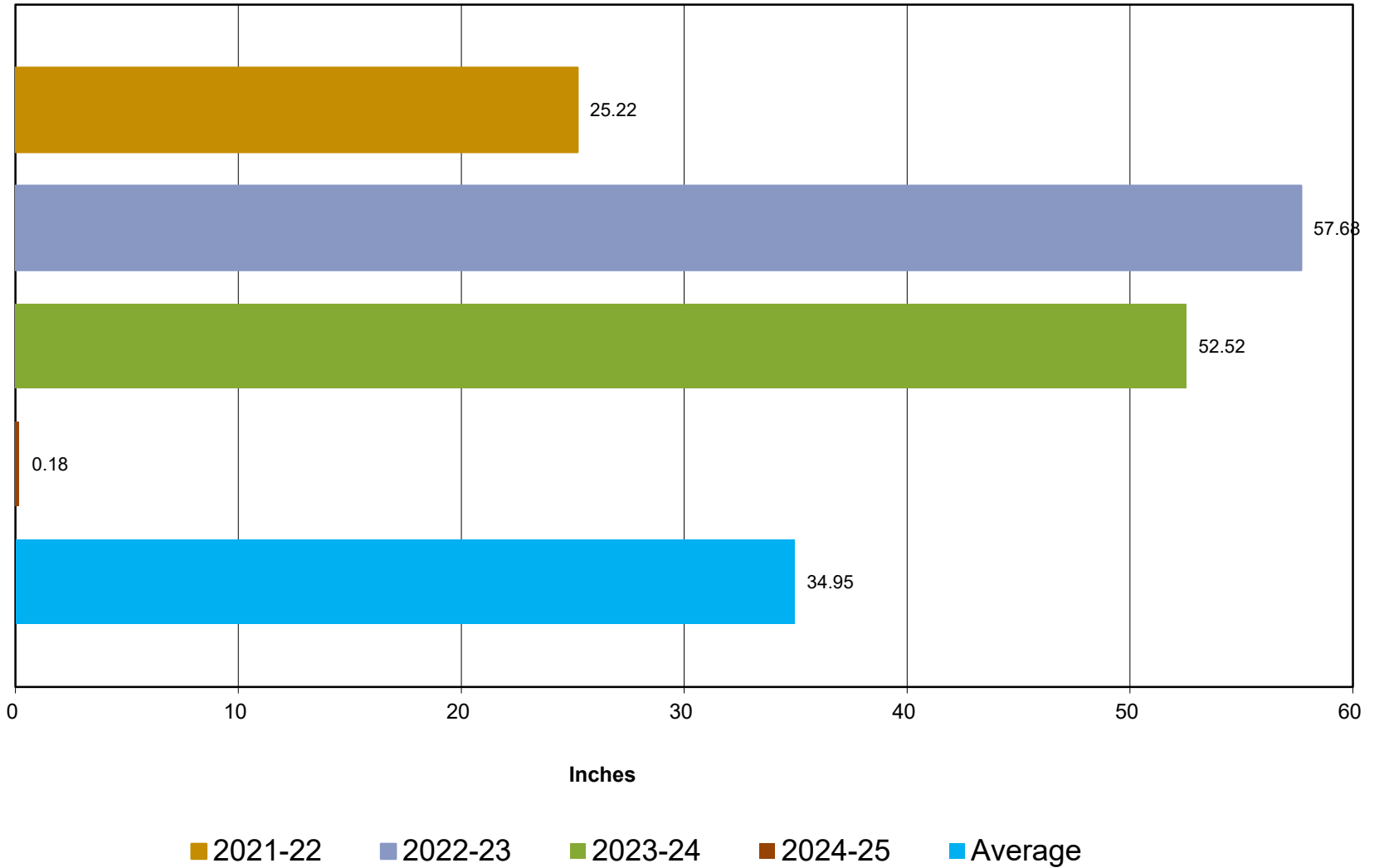
Crestline Village Water District

Rainfall Jul 1-Jun 30



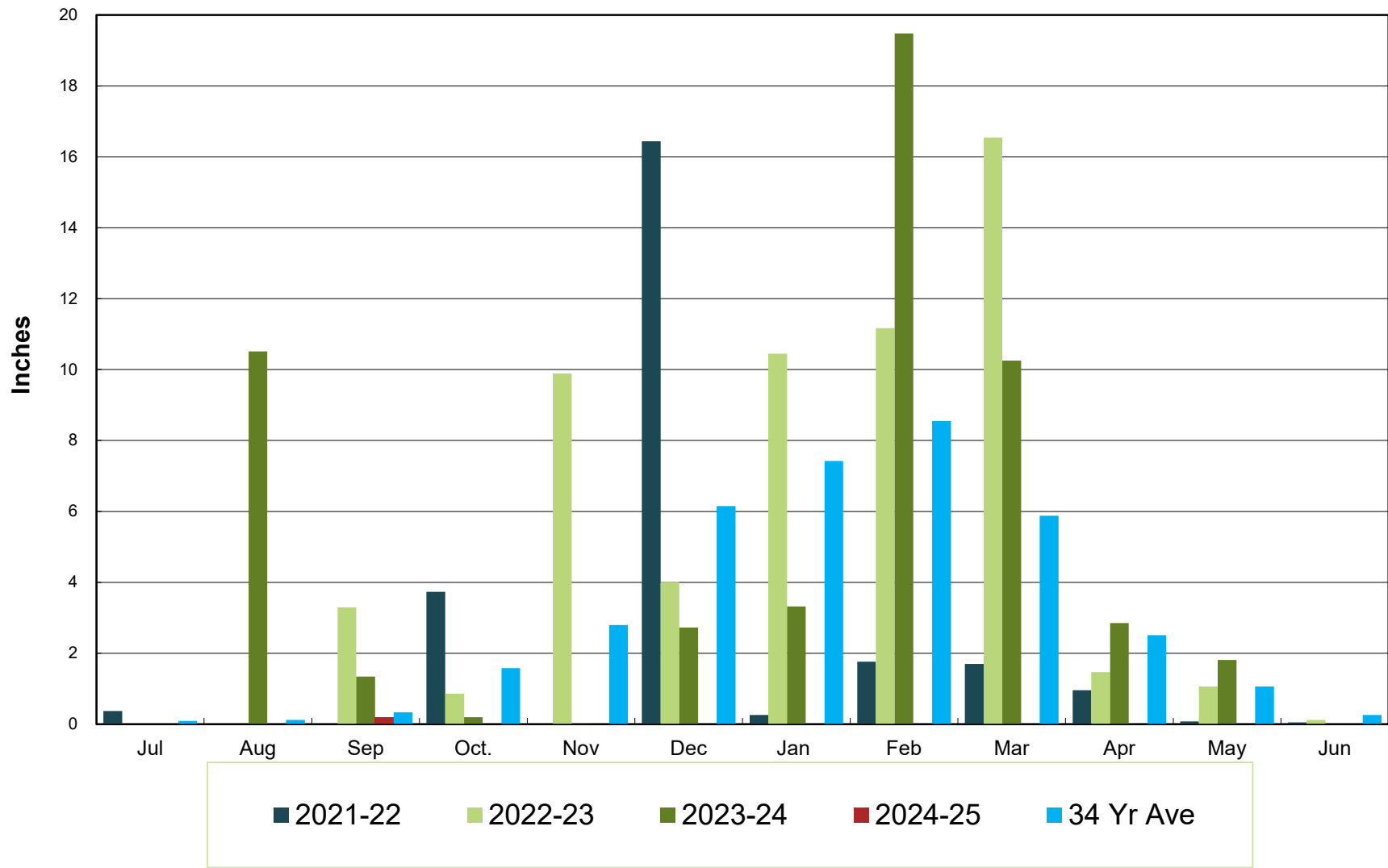
Crestline Village Water District

Total Rainfall Jul 1- Jun 30



Crestline Village Water District

Rainfall by Month



Crestline Village Water District

Rainfall Cumulative

