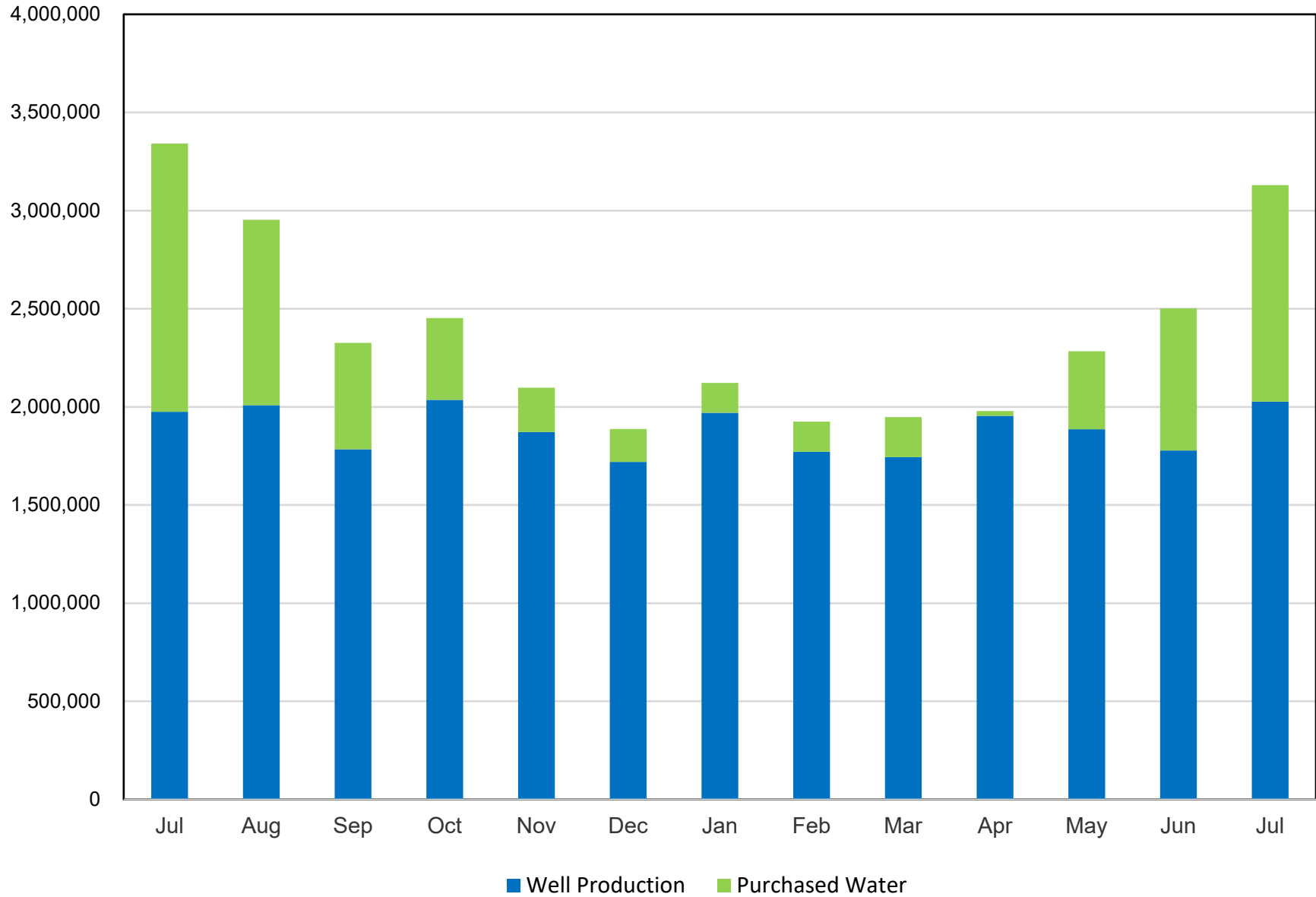


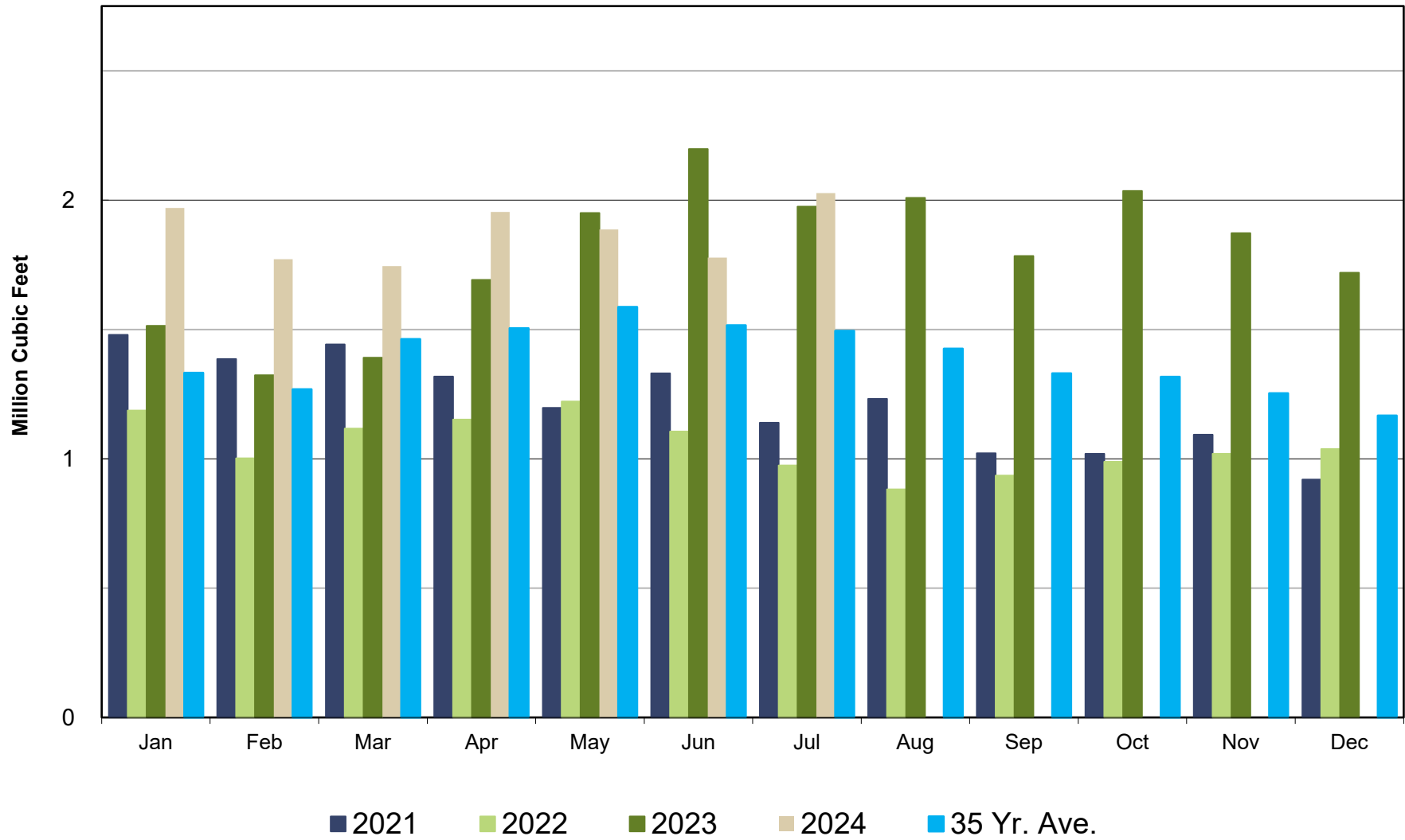
Crestline Village Water District

Water Sources - Last 13 Months in Cubic Feet July 2023 - July 2024



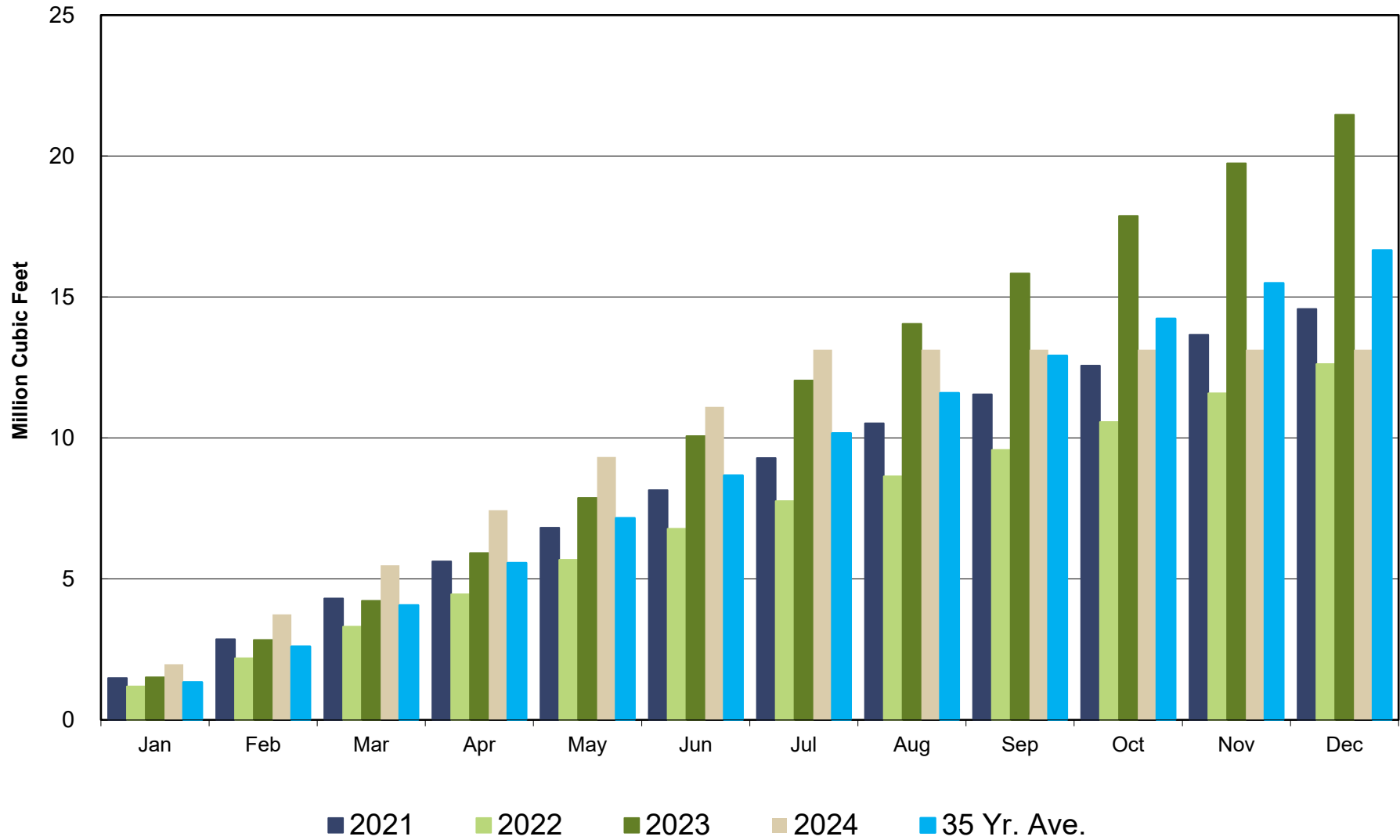
Crestline Village Water District

Well Production by Month Comparison



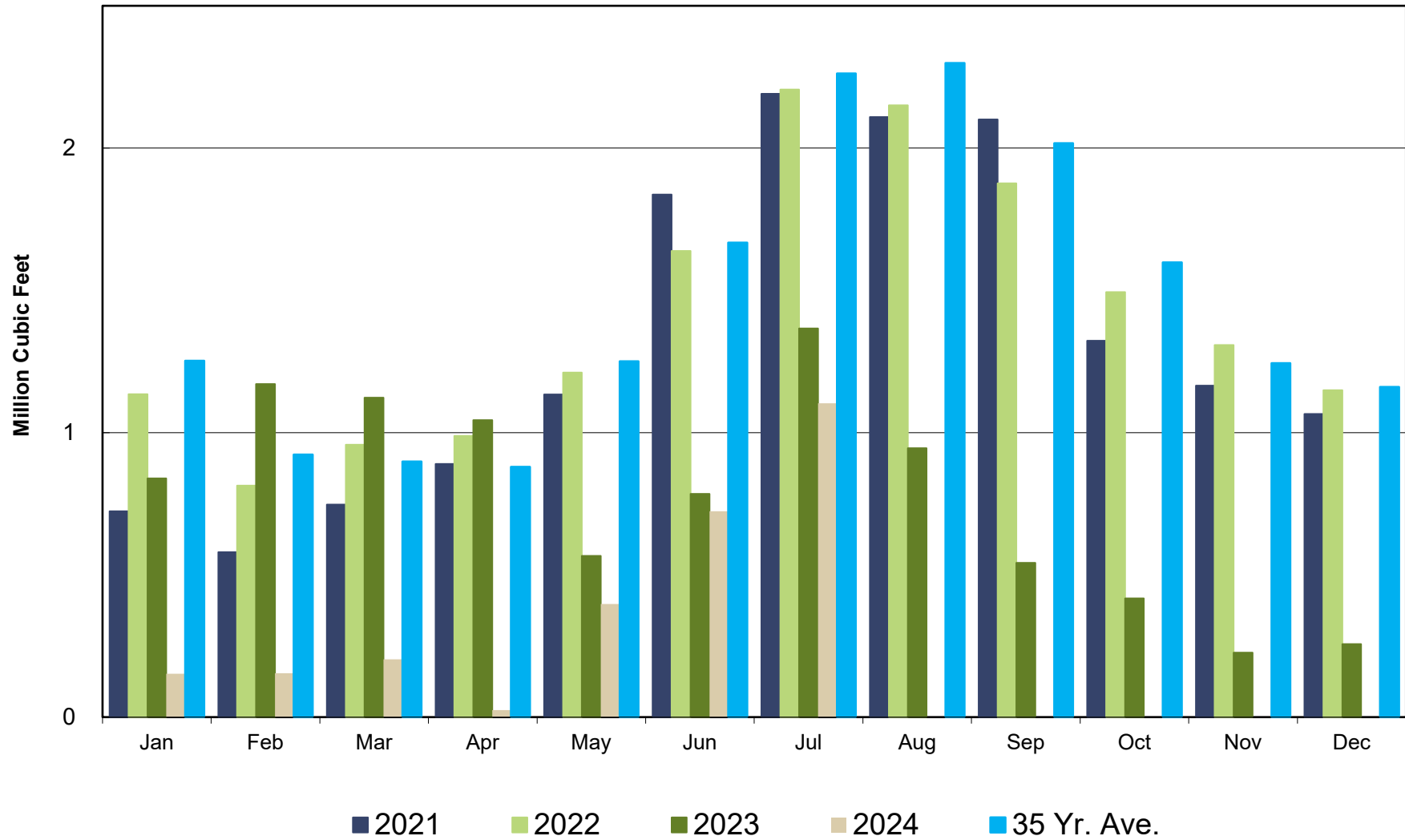
Crestline Village Water District

Well Production by Month Cumulative



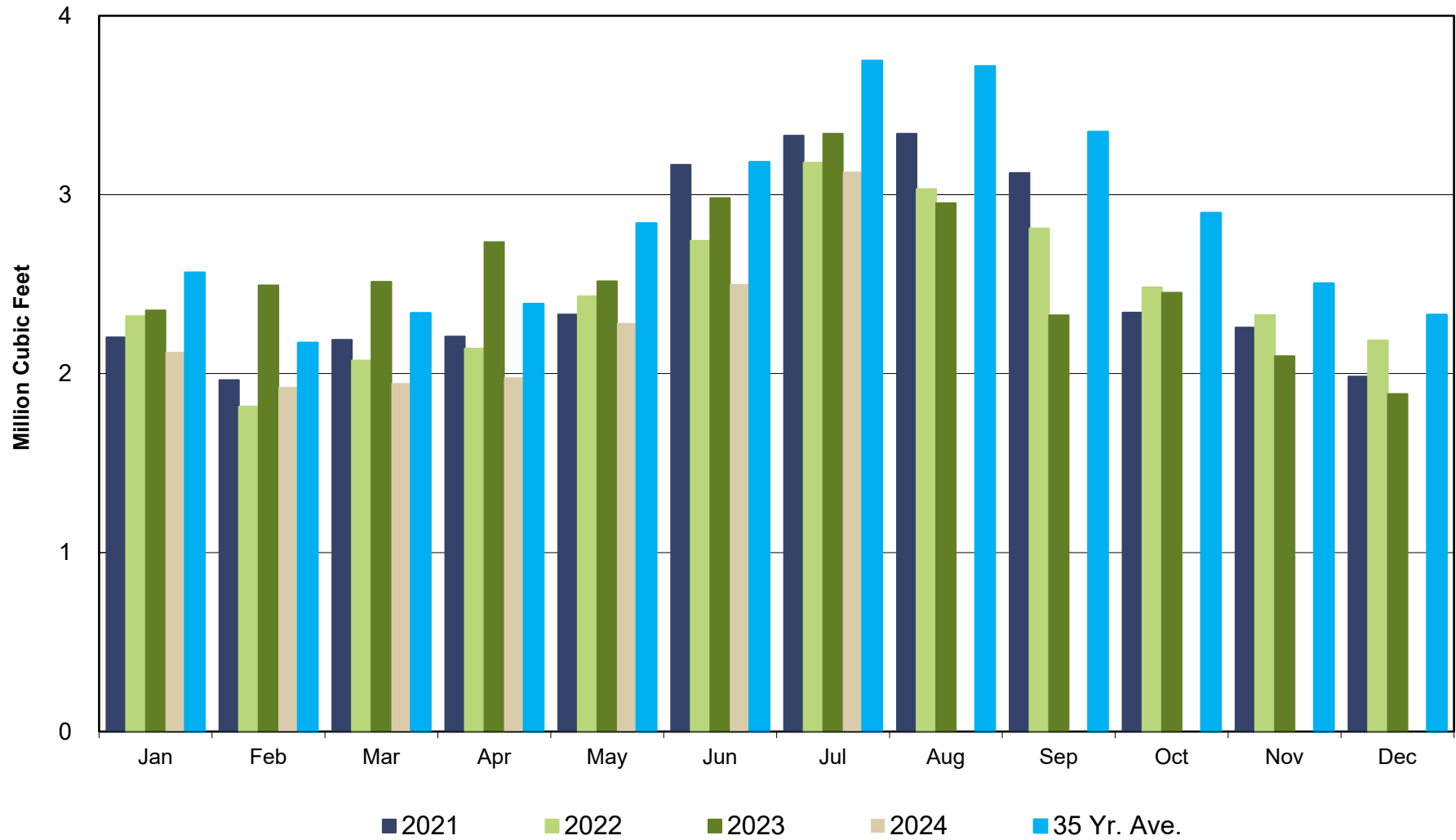
Crestline Village Water District

Purchased Water by Month Comparison



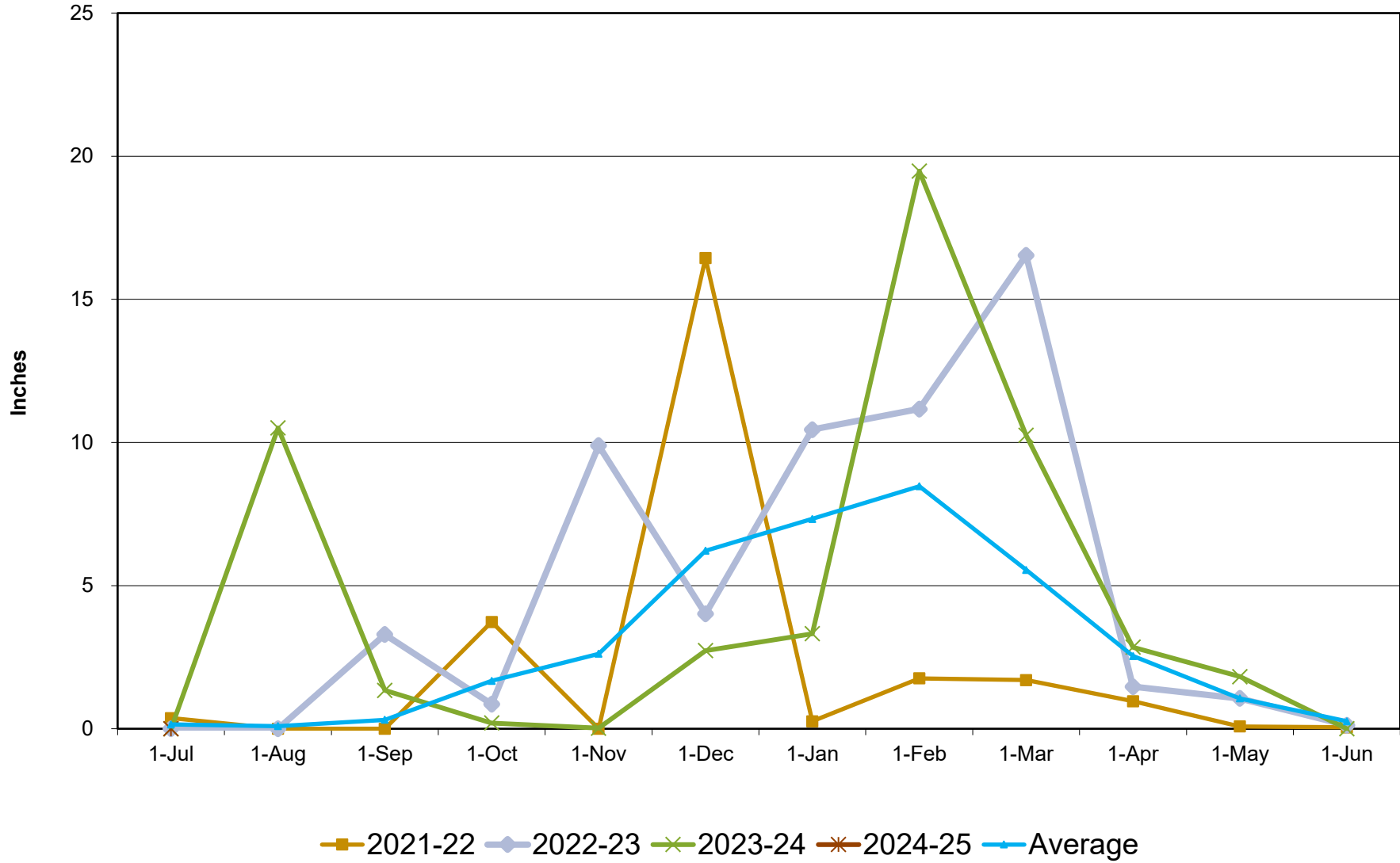
Crestline Village Water District

Total Production by Month Comparison



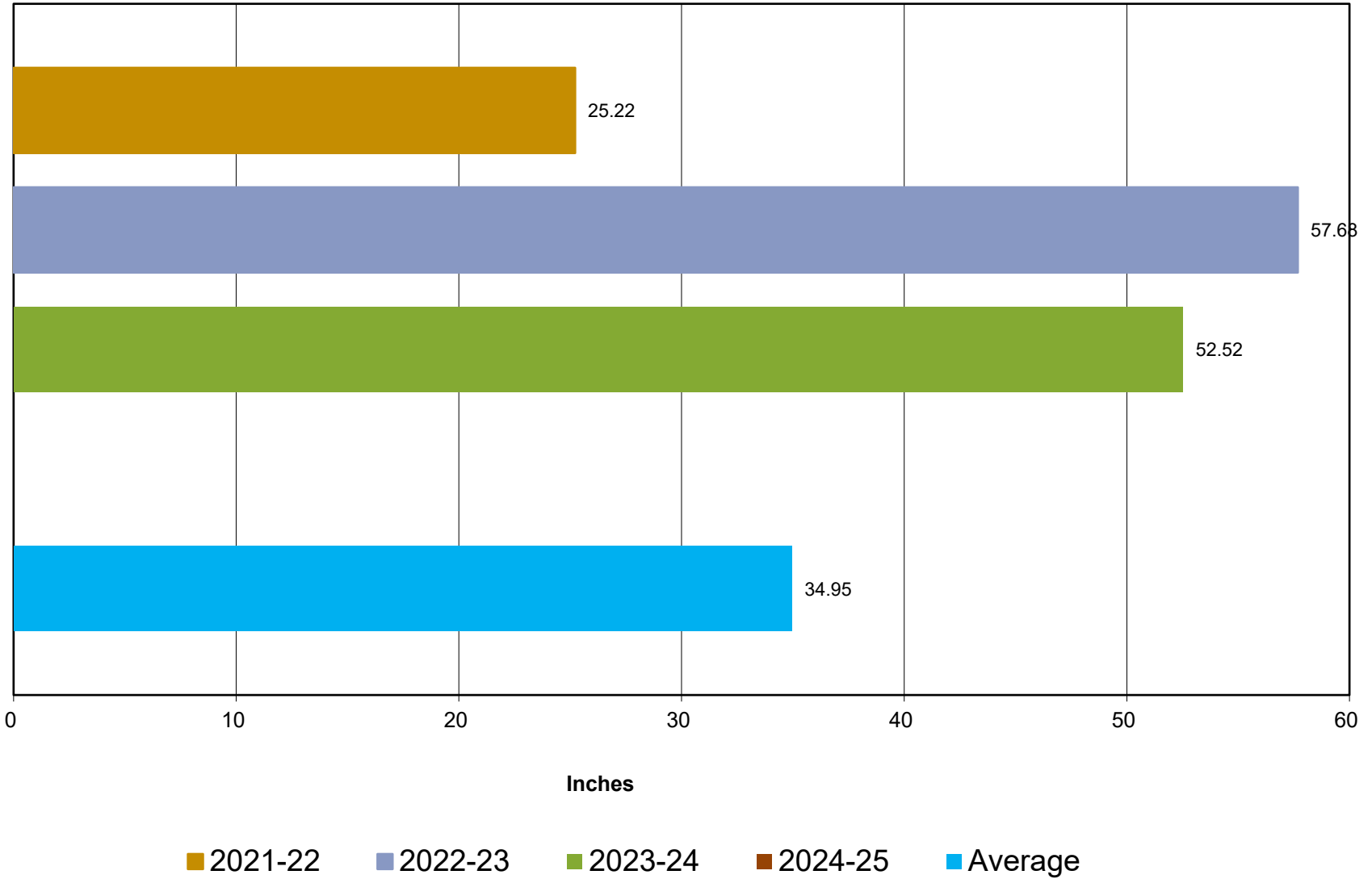
Crestline Village Water District

Rainfall Jul 1-Jun 30



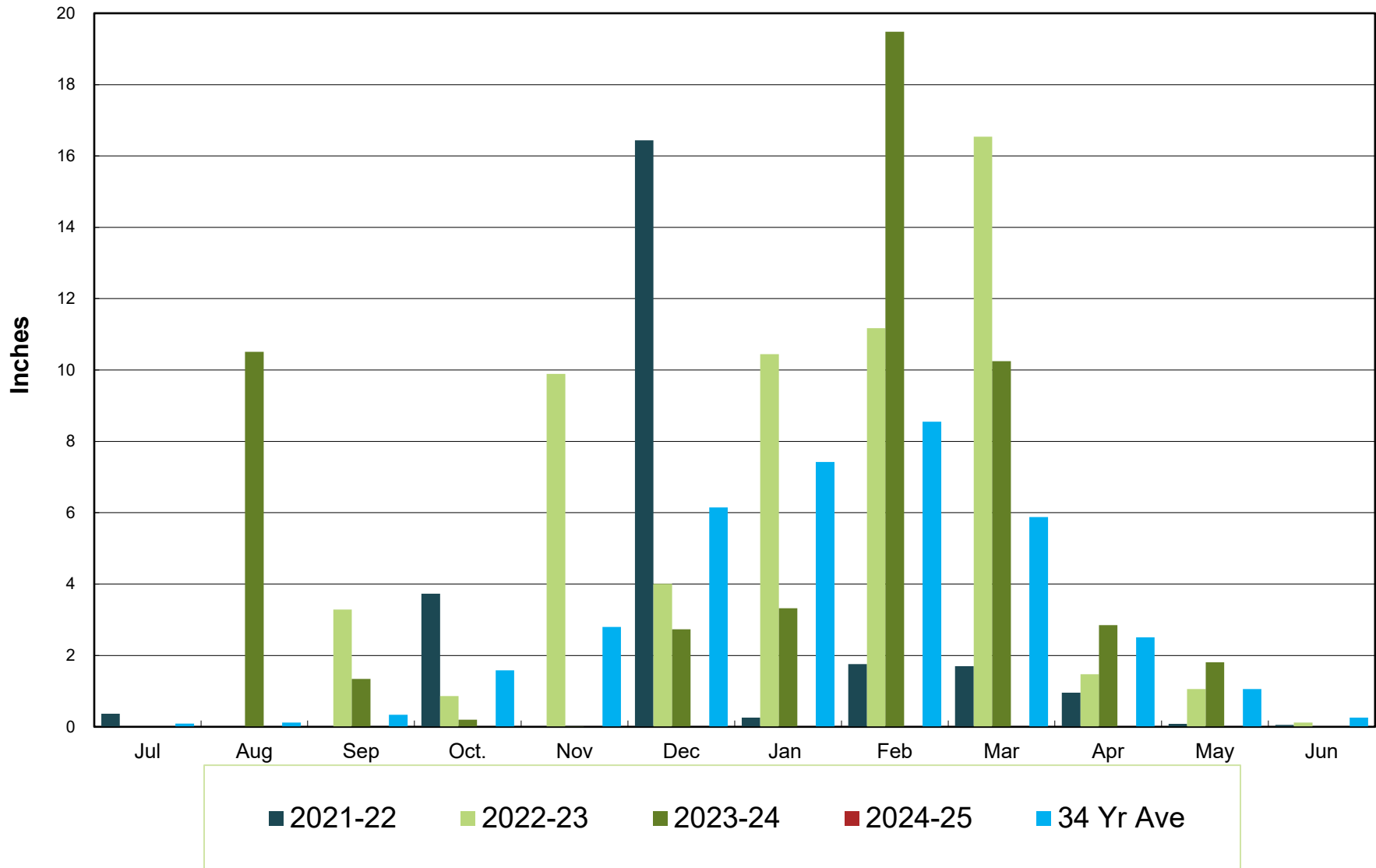
Crestline Village Water District

Total Rainfall Jul 1- Jun 30



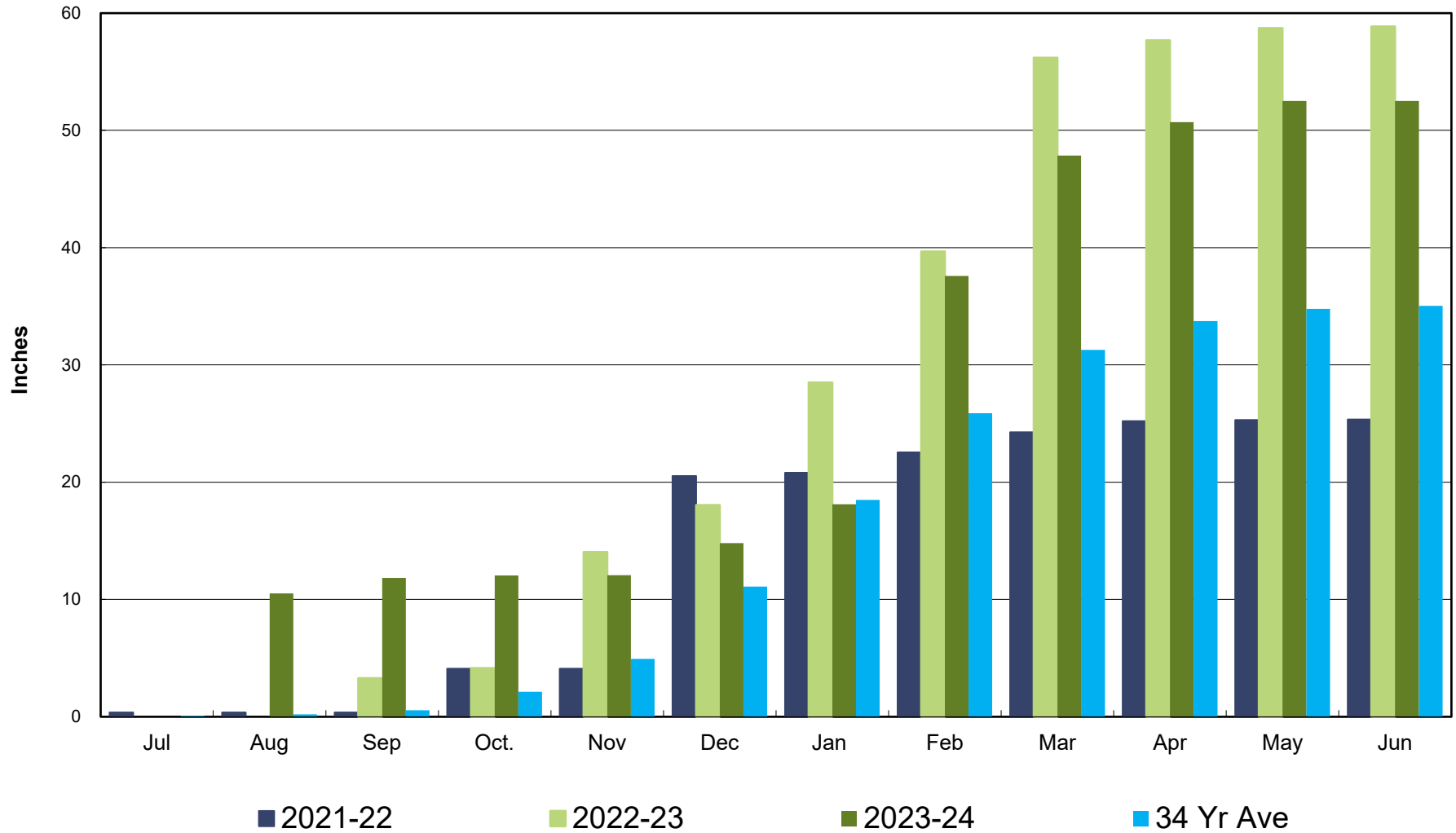
Crestline Village Water District

Rainfall by Month



Crestline Village Water District

Rainfall Cumulative



Crestline Village Water District
Change in Water Production - Cubic Feet
2020 vs 2023-24

2023-24 Production	Jun	Jul	Aug	Sep	Oct	Nov	Dec	Jan	Feb	Mar	Apr	May	Jun	Jul	Average
Wells	2,197,566	1,975,165	2,008,398	1,784,165	2,035,512	1,872,134	1,719,469	1,969,762	1,771,386	1,744,554	1,954,539	1,886,560	1,777,983	2,026,665	1,879,261
CLAWA	784,853	1,366,110	945,080	542,487	417,313	226,243	256,324	152,607	154,105	203,128	24,733	397,380	723,864	1,102,981	428,854
Total	2,982,419	3,341,275	2,953,478	2,326,652	2,452,825	2,098,377	1,975,793	2,122,369	1,925,491	1,947,682	1,979,272	2,283,940	2,501,847	3,129,646	2,308,114
2020 Production															
Wells	2,069,986	1,740,467	1,863,039	1,724,448	1,520,142	1,573,711	1,397,987	1,790,808	1,606,207	1,837,581	1,922,894	1,936,457	2,069,986	1,740,467	1,748,644
CLAWA	978,249	1,827,648	1,490,709	1,410,963	1,269,277	709,571	795,000	357,741	340,374	230,214	152,380	712,554	978,249	1,827,648	856,223
Total	3,048,235	3,568,115	3,353,748	3,135,411	2,789,419	2,283,282	2,192,987	2,148,549	1,946,581	2,067,795	2,075,274	2,649,011	3,048,235	3,568,115	2,604,867
Change in Production															
Wells	127,580	234,698	145,359	59,717	515,370	298,423	321,482	178,954	165,179	(93,027)	31,645	(49,897)	(292,003)	286,198	130,617
CLAWA	(193,396)	(461,538)	(545,629)	(868,476)	(851,964)	(483,328)	(538,676)	(205,134)	(186,269)	(27,086)	(127,647)	(315,174)	(254,385)	(724,667)	(427,370)
Total	(65,816)	(226,840)	(400,270)	(808,759)	(336,594)	(184,905)	(217,194)	(26,180)	(21,090)	(120,113)	(96,002)	(365,071)	(546,388)	(438,469)	(296,753)
Total (AF)	(1.51)	(5.21)	(9.19)	(18.57)	(7.73)	(4.24)	(4.99)	(0.60)	(0.48)	(2.76)	(2.20)	(8.38)	(12.54)	(10.07)	(6.81)

Crestline Village Water District
Change in Total Water Consumption - Cubic Feet
2020 vs 2023-24

2023-24 Total Consumption	Jun	Jul	Aug	Sep	Oct	Nov	Dec	Jan	Feb	Mar	Apr	May	Jun	Jul	Total
Cubic Feet	2,346,840	2,201,500	2,686,400	2,359,599	2,120,401	2,056,200	1,917,150	1,839,915	1,795,615	1,570,585	1,739,690	1,905,983	2,182,219	2,431,700	24,605,457
Total	2,346,840	2,201,500	2,686,400	2,359,599	2,120,401	2,056,200	1,917,150	1,839,915	1,795,615	1,570,585	1,739,690	1,905,983	2,182,219	2,431,700	24,605,457
2020 Total Consumption															
Cubic Feet	2,668,700	2,833,100	3,005,506	3,281,600	2,889,200	2,638,000	2,114,721	2,147,430	1,973,581	1,859,473	1,972,980	2,189,010	2,668,700	2,833,100	29,573,301
Total	2,668,700	2,833,100	3,005,506	3,281,600	2,889,200	2,638,000	2,114,721	2,147,430	1,973,581	1,859,473	1,972,980	2,189,010	2,668,700	2,833,100	29,573,301
Change in Total Consumption															
Cubic Feet	(321,860)	(631,600)	(319,106)	(922,001)	(768,799)	(581,800)	(197,571)	(307,515)	(177,966)	(288,888)	(233,290)	(283,027)	(486,481)	(401,400)	(413,987)
Cubic Feet	(321,860)	(631,600)	(319,106)	(922,001)	(768,799)	(581,800)	(197,571)	(307,515)	(177,966)	(288,888)	(233,290)	(283,027)	(486,481)	(401,400)	(413,987)
Total (AF)	(7.39)	(14.50)	(7.33)	(21.17)	(17.65)	(13.36)	(4.54)	(7.06)	(4.09)	(6.63)	(5.36)	(6.50)	(11.17)	(9.21)	(9.50)
% Change															
	-12.06%	-22.29%	-10.62%	-28.10%	-26.61%	-22.05%	-9.34%	-14.32%	-9.02%	-15.54%	-11.82%	-12.93%	-18.23%	-14.17%	-16.06%
Total	-12.06%	-22.29%	-10.62%	-28.10%	-26.61%	-22.05%	-9.34%	-14.32%	-9.02%	-15.54%	-11.82%	-12.93%	-18.23%	-14.17%	-16.74%

**Crestline Village Water District
Gallons Per Capita Daily Calculation**

2023-24

	<u>Jun</u>	<u>Jul</u>	<u>Aug</u>	<u>Sep</u>	<u>Oct</u>	<u>Nov</u>	<u>Dec</u>	<u>Jan</u>	<u>Feb</u>	<u>Mar</u>	<u>Apr</u>	<u>May</u>	<u>Jun</u>	<u>Jul</u>	<u>Average</u>
Residential Services with 92325 Zip	4,964	3,863	3,863	3,863	3,863	3,863	3,863	3,863	3,863	3,863	3,863	3,863	3,863	3,863	3,863
People per Household	2.38	2.47	2.47	2.47	2.47	2.47	2.47	2.47	2.47	2.47	2.47	2.47	2.47	2.47	2.38
Est. Full-Time Population	11,814	9,542	9,542	9,542	9,542	9,542	9,542	9,542	9,542	9,542	9,542	9,542	9,542	9,542	9,194
Days Per Month	30	31	31	30	31	30	31	31	29	31	30	31	30	31	31
Gallons Water Produced	22,308,494	24,992,737	22,092,015	17,403,357	18,347,131	15,695,860	14,778,932	15,875,320	14,402,673	14,568,661	14,804,955	17,083,871	18,713,816	23,409,752	17,396,611
92325 Residential Water Usage (CF)	1,978,100	1,740,400	2,167,300	1,945,800	1,769,000	1,754,500	1,668,200	1,665,965	1,622,800	1,428,400	1,569,590	1,556,810	1,886,700	2,026,100	1,731,289
% Residential Water	84.3%	79.1%	80.7%	82.5%	83.4%	85.3%	87.0%	90.6%	90.4%	91.0%	90.2%	81.7%	86.5%	83.3%	85.68%
Gallons Per Capita Daily - 2022/23	62.94	84.49	74.69	60.80	62.03	54.83	49.96	53.67	52.05	49.25	51.72	57.75	65.37	79.14	59.72
R - Gallons Per Capita Daily - 2022/23	53.06	66.80	60.26	50.13	51.75	46.79	43.47	48.60	47.04	44.79	46.66	47.17	56.52	65.94	50.83

2020

Residential Services with 92325 Zip	4,964	3,863	3,863	3,863	3,863	3,863	3,863	3,863	3,863	3,863	3,863	3,863	3,863	3,863	4,414
People per Household	2.38	2.47	2.47	2.47	2.47	2.47	2.47	2.47	2.47	2.47	2.47	2.47	2.47	2.47	2.38
Est. Full-Time Population	11,814	9,542	9,542	9,542	9,542	9,542	9,542	9,542	9,542	9,542	9,542	9,542	9,542	9,542	10,505
Days Per Month	30	31	31	30	31	30	31	31	29	31	30	31	30	31	366
Gallons Water Produced	22,800,798	26,689,500	25,086,035	23,452,874	20,864,854	17,078,949	16,403,543	16,071,147	14,560,426	15,467,107	15,523,050	19,814,602	22,800,798	26,689,500	19,484,407
92325 Residential Water Usage (CF)	2,263,800	2,357,300	2,551,906	2,752,100	2,421,300	2,219,900	1,910,021	1,846,800	1,735,931	1,562,890	1,715,180	1,967,800	2,263,800	2,357,300	25,304,928
% Residential Water	84.8%	83.2%	84.9%	83.9%	83.8%	84.2%	90.3%	86.0%	88.0%	84.1%	86.9%	89.9%	84.8%	83.2%	85.83%
Gallons Per Capita Daily - 2020	64.33	90.23	84.81	81.93	70.54	59.66	55.45	54.33	52.62	52.29	54.23	66.99	79.65	90.23	66.89
R - Gallons Per Capita Daily - 2020	54.57	75.08	72.01	68.71	59.12	50.21	50.09	46.72	46.28	43.95	47.14	60.21	67.57	75.08	57.26
Change R-GPCD 2020-2023	(1.52)	(8.28)	(11.75)	(18.57)	(7.37)	(3.42)	(6.61)	1.87	0.76	0.85	(0.48)	(13.04)	(11.05)	(9.14)	(6.42)
% Change	-2.78%	-11.03%	-16.32%	-27.03%	-12.47%	-6.81%	-13.21%	4.01%	1.64%	1.92%	-1.02%	-21.66%	-16.35%	-12.17%	-11.22%