

**Crestline Village Water District  
Source of Supply Production Report  
System Loss - Last 13 Months  
In Cubic Feet**

03/14/14

	Feb	Mar	Apr	May	June	July	August	Sept	Oct	Nov	Dec	Jan '14	Feb	Total
<b>Sources of Supply</b>														
Wells	1,416,423	1,570,947	1,427,183	1,498,424	1,506,235	2,091,243	1,350,287	1,330,182	1,210,928	1,344,261	1,168,307	1,226,426	1,029,924	18,170,770
Purchased Water	378,743	606,417	878,490	1,119,532	1,641,898	1,372,567	1,889,105	1,991,017	1,541,056	1,111,284	1,081,043	1,081,351	712,366	15,404,869
Adjustment to Wells *	0	0	0	0	0	0	0	0	0	0	0	0	0	0
<b>Total Water Supplied</b>	<b>1,795,166</b>	<b>2,177,364</b>	<b>2,305,673</b>	<b>2,617,956</b>	<b>3,148,133</b>	<b>3,463,810</b>	<b>3,239,392</b>	<b>3,321,199</b>	<b>2,751,984</b>	<b>2,455,545</b>	<b>2,249,350</b>	<b>2,307,777</b>	<b>1,742,290</b>	<b>33,575,639</b>
<b>Water Used **</b>														
Metered Accounts														
Crestline Area	841,342	1,020,811	1,009,016	1,126,551	1,327,377	1,400,287	1,365,266	1,302,605	1,096,815	986,621	956,740	944,307	820,911	14,198,649
Lake Gregory Area	1,000,335	977,325	985,669	1,260,731	1,492,131	1,671,846	1,607,907	1,691,734	1,365,278	1,172,404	937,125	1,060,911	865,939	16,089,335
Change in Storage	(27,796)	(17,933)	64,480	(47,368)	(33,603)	107,239	(93,285)	46,834	39,532	(25,989)	31,137	57,593	57,593	158,434
Flushing, System & Other	17,614	105,259	109,923	115,920	119,387	115,149	108,366	105,749	106,590	206,322	106,860	65,024	21,980	1,304,143
<b>Accounted for Water</b>	<b>1,831,495</b>	<b>2,085,462</b>	<b>2,169,088</b>	<b>2,455,834</b>	<b>2,905,292</b>	<b>3,294,521</b>	<b>2,988,254</b>	<b>3,146,922</b>	<b>2,608,215</b>	<b>2,339,358</b>	<b>2,031,862</b>	<b>2,127,835</b>	<b>1,766,423</b>	<b>31,750,561</b>
<b>System Loss (CF)</b>	(36,329)	91,902	136,585	162,122	242,841	169,289	251,138	174,277	143,769	116,187	217,488	179,942	(24,133)	1,825,078
<b>System Loss (%)</b>	-2.0%	4.2%	5.9%	6.2%	7.7%	4.9%	7.8%	5.2%	5.2%	4.7%	9.7%	7.8%	-1.4%	5.4%
<b>System Loss (GPM)</b>	(6.7)	14.9	24.5	27.2	40.7	29.3	43.5	29.2	24.1	18.9	40.3	29.2	(4.5)	25.7
<b>Month to Month Averaging ***</b>														
<b>System Loss (CF)</b>	(18,165)	27,787	114,244	149,354	202,482	206,065	210,214	212,708	159,023	129,978	166,838	198,715	77,905	1,837,148
<b>System Loss (%)</b>	-1.0%	1.1%	5.1%	6.1%	7.0%	6.3%	6.3%	6.5%	5.2%	5.0%	7.2%	8.7%	3.2%	5.5%
<b>System Loss (GPM)</b>	(3.4)	4.1	19.7	25.8	33.9	35.0	36.4	36.3	26.6	21.5	29.6	34.8	12.4	25.9
<b>Estimated Uses</b>														
Known leaks - Est. loss	2,166	2,888	5,390	1,836	1,444	337	4,644	337	2,339	241	2,370	6,345	337	30,674
<b>Total Estimated Uses</b>	<b>2,166</b>	<b>2,888</b>	<b>5,390</b>	<b>1,836</b>	<b>1,444</b>	<b>337</b>	<b>4,644</b>	<b>337</b>	<b>2,339</b>	<b>241</b>	<b>2,370</b>	<b>6,345</b>	<b>337</b>	<b>30,674</b>
<b>Unaccounted for Water (CF)</b>	(38,495)	89,014	131,195	160,286	241,397	168,952	246,494	173,940	141,430	115,946	215,118	173,597	(24,470)	1,794,404
<b>Unaccounted For (%)</b>	-2.1%	4.1%	5.7%	6.1%	7.7%	4.9%	7.6%	5.2%	5.1%	4.7%	9.6%	7.5%	-1.4%	5.3%
<b>Unaccounted For (GPM)</b>	(7.1)	14.4	23.5	26.9	40.4	29.3	42.7	29.1	23.7	18.8	39.9	28.2	(4.5)	25.3
<b>Number of Days in Period</b>	<b>28</b>	<b>32</b>	<b>29</b>	<b>31</b>	<b>31</b>	<b>30</b>	<b>30</b>	<b>31</b>	<b>31</b>	<b>32</b>	<b>28</b>	<b>32</b>	<b>28</b>	<b>369</b>

**NOTES:**

Estimated - Includes estimated billing period. This month includes estimated consumption. The following billing period will reflect adjustments to actual water used.

\* - Currently there are no Adjustments to Wells being made.

\*\* - Water Used - Metered Accounts is adjusted to the time period in Total Water Supplied

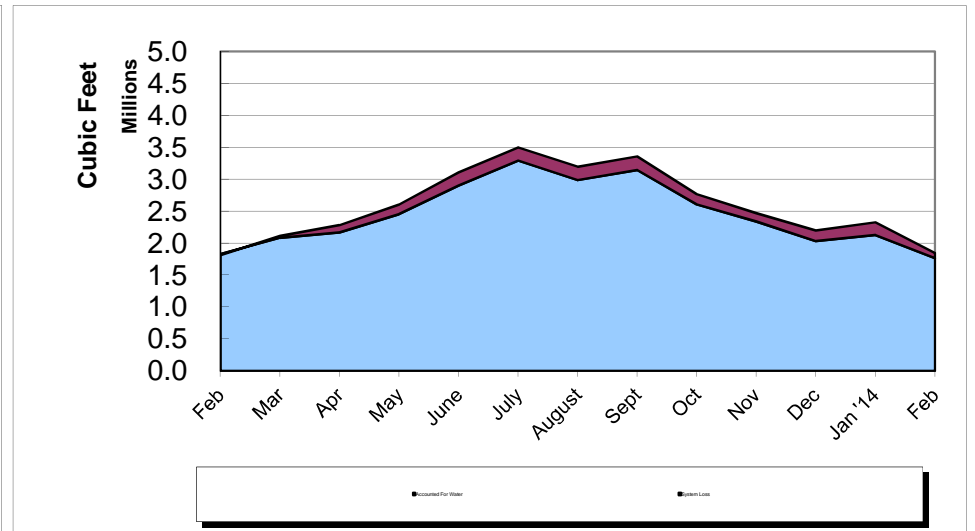
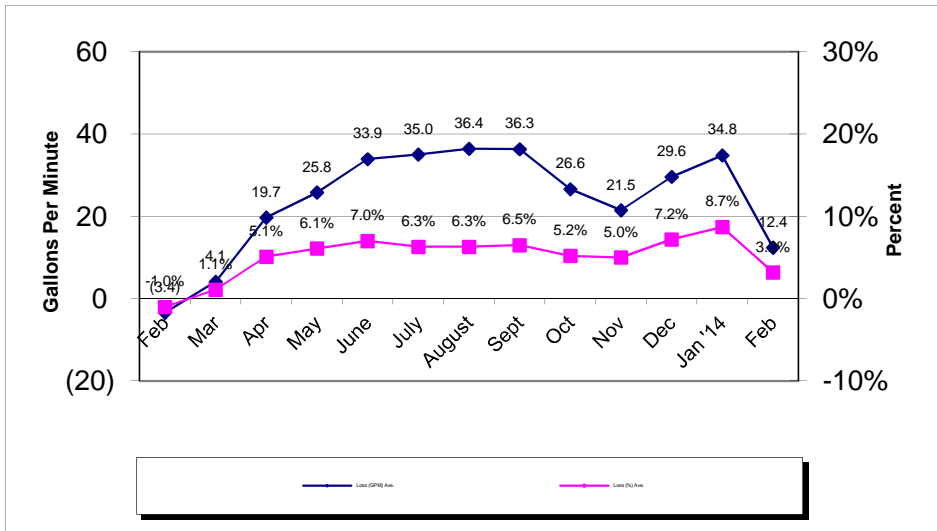
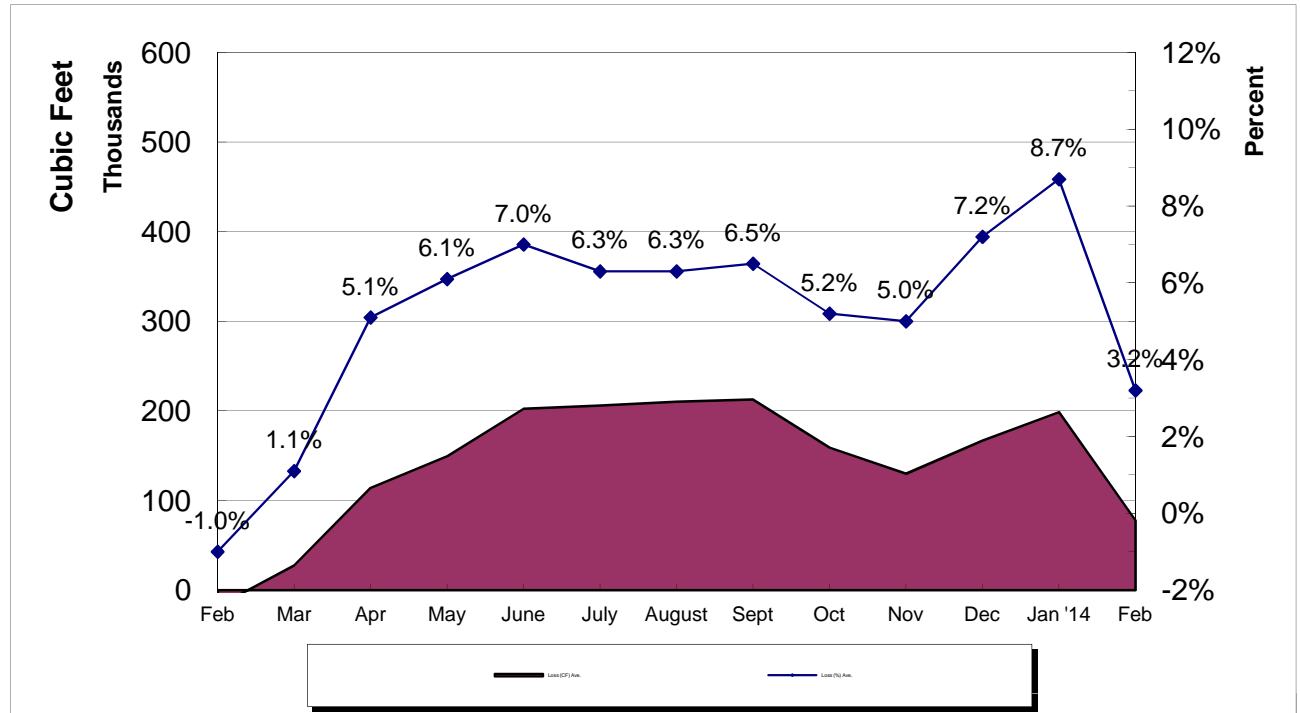
\*\*\* - Month to Month averaging averages the System Loss for each period with the immediately prior period for trending purposes.

<b>System Loss Costs</b>	<b>This Month</b>	<b>Average</b>
Cost of System Loss:	\$2,057	\$3,731
Cost of 5% System Loss:	2,300	3,409
<b>Amount above (below) 5% System Loss</b>	<b>(\$243)</b>	<b>\$322</b>
Note: Cost is calculated at highest cost (CLAWA Rate: \$2.64/100 c.f.)		

# Crestline Village Water District

## System Loss Last 13 Months

With Month to Month Averaging



# Crestline Village Water District

System Report on: 02/28/14

For Month of: February 2014

Water Storage (Gal)	Capacity	Gallons/ Foot	Level (FT)	Current Storage	% of Capacity
Beacon I & II	385,354	16,754	21.10	353,509	91.74%
Saxon	337,674	14,681	16.10	236,364	70.00%
Pinecrest I & II	2,063,492	54,302	29.00	1,574,758	76.32%
Zurich	171,245	7,611	20.50	156,026	91.11%
Lakeview	1,230,212	27,959	38.30	1,070,830	87.04%
Old Mill	705,900	27,150	22.60	613,590	86.92%
Barn	444,443	19,753	18.80	371,356	83.56%
Wilson	983,681	33,920	25.70	871,744	88.62%
Chillon	337,674	14,681	17.40	255,449	75.65%
Brookside	748,067	28,772	22.80	656,002	87.69%
Chamois	1,026,532	39,482	22.10	872,552	85.00%
<b>Total</b>	<b>8,434,274</b>		<b>254.40</b>	<b>7,032,180</b>	<b>83.38%</b>

WELLS	Production M-T-D (Cubic Feet)	Status
Altdorf	64,375	On
Pioneer-2	47,128	On
Pioneer-1	38,958	On
Old Mill Springs	20,950	On
Maple Springs	37,324	On
Willow Springs	6,300	Off
Brookside Springs	9,220	On
Hillside Springs	10,340	On
Pinecrest 1 & 2	28,910	On
Pinecrest Vertical	46,310	On
Cypress Vertical	82,570	On
Anderson Vertical	60,400	Off
Wilson Springs 1 & 2	110,596	On
Wilson Vertical	135,800	On
Felsen Vertical	125,550	On
Horst	55,700	On
Jewel 64	73,558	On
Cathcart	19,600	On
Bergschrund	14,134	On
Chamois	0	Off
Chamois Vertical	37,560	On
	0	0
Chillon 64	0	Off
	0	0
Lewter	4,641	On
<b>Total</b>	<b>1,029,924</b>	

C.L.A.W.A.	FLOWS - GPM				Production M-T-D (Cubic Feet)
	Timed	Requested	Variance	% Variance	
CF - Crestline	50	50	0	0.00%	273,262
Mile High 2"	30	30	0	0.00%	109,291
Mile High 4"	0	0	0	0.00%	0
Pinecrest 2"	0	0	0	0.00%	0
Pinecrest 4"	100	100	0	0.00%	329,813
Lake Drive 2"	0	0	0	0.00%	0
Lake Drive 4"	0	0	0	0.00%	0
Camp Seely	0	0	0	0.00%	0
<b>Total</b>	<b>180</b>	<b>180</b>	<b>0</b>	<b>0.00%</b>	<b>712,366</b>

February Purchases	GPM	Cubic Feet	Wells	GPM	Cubic Feet
Last Year M-T-D:	70.3	378,943		262.7	1,416,052
Actual M-T-D:	132.2	712,366		191.1	1,029,924
Over/(Under) Last Year:	61.9	333,423.0		(71.6)	(386,128.0)

Total	GPM	Cubic Feet
Last Year M-T-D:	333.0	1,794,995
Actual M-T-D:	323.2	1,742,290
Over/(Under) Last Year:	(9.8)	(52,705.0)

**Crestline Village Water District  
Source of Supply Production Report  
Cubic Feet  
Last 13 Months**

03/13/14

<b>Source Name</b>	<b>February'13</b>	<b>March</b>	<b>April</b>	<b>May</b>	<b>June</b>	<b>July</b>	<b>August</b>	<b>September</b>	<b>October</b>	<b>November</b>	<b>December</b>	<b>January '14</b>	<b>February</b>	<b>Last 12 Months</b>	<b>13 Months</b>
<b>Division 10</b>															
Altdorf	77,950	88,655	77,582	81,350	78,639	74,348	71,364	72,723	71,503	74,466	65,955	76,202	64,375	897,162	975,112
Pioneer #2	59,885	69,654	61,015	63,688	60,240	57,663	55,976	57,007	55,775	56,206	48,471	52,238	47,128	685,061	744,946
Pioneer #1	57,586	64,982	55,163	55,731	50,942	47,997	45,933	46,521	45,468	47,108	41,224	42,795	38,958	582,822	640,408
Old Mill Springs	36,160	41,740	35,980	35,510	32,870	28,400	25,750	26,230	25,940	26,300	22,860	22,750	20,950	345,280	381,440
Maple Springs	68,465	75,575	65,483	67,691	63,999	59,693	56,174	55,397	52,476	51,481	42,586	45,213	37,324	673,092	741,557
Willow Springs	39,630	43,120	36,280	35,930	30,300	27,120	24,680	22,740	21,380	20,300	16,450	16,240	6,300	300,840	340,470
Brookside Springs	19,170	16,860	11,520	15,530	11,300	6,800	6,670	6,530	17,690	18,140	14,210	11,300	9,220	145,770	164,940
Hillside Springs	16,820	18,920	16,750	17,400	16,440	15,320	14,730	13,790	13,300	13,370	10,930	12,170	10,340	173,460	190,280
Pinecrest	52,450	61,510	56,770	57,250	55,710	46,700	46,590	44,390	40,720	39,040	32,570	35,030	28,910	545,190	597,640
Pinecrest Vertical	88,800	64,630	91,870	83,130	77,520	66,570	67,970	63,470	61,250	59,390	48,750	54,470	46,310	785,330	874,130
Cypress Vertical	86,290	62,430	52,470	116,950	120,800	93,070	93,300	92,690	76,290	98,070	84,070	96,270	82,570	1,068,980	1,155,270
Anderson Vertical	84,600	124,800	112,600	88,300	121,500	111,900	108,600	113,600	107,000	106,500	89,000	95,000	60,400	1,239,200	1,323,800
Division 10 Totals	687,806	732,876	673,483	718,460	720,260	635,581	617,737	615,088	588,792	610,371	517,076	559,678	452,785	7,442,187	8,129,993
<b>Division 20</b>															
Wilson Springs #1 & 2	147,200	164,500	144,600	151,800	148,900	141,900	138,300	117,300	130,436	134,407	118,007	125,789	110,596	1,626,535	1,773,735
Wilson Vertical	160,300	175,100	164,100	167,600	180,700	169,400	163,900	168,000	127,500	157,300	149,500	137,400	135,800	1,896,300	2,056,600
Felsen Vertical	157,740	202,690	182,280	196,170	195,900	168,150	179,270	180,230	121,320	197,810	171,210	167,090	125,550	2,087,670	2,245,410
Horst	89,600	99,300	86,500	89,700	85,400	79,700	76,300	76,100	72,500	71,500	60,800	67,400	55,700	920,900	1,010,500
Jewell No. 64	71,003	80,995	73,693	74,019	74,675	79,952	79,280	81,308	80,393	82,253	72,027	79,812	73,558	931,965	1,002,968
Cathcart	24,300	27,700	24,700	27,200	26,500	24,600	23,300	23,500	23,000	23,400	21,300	23,400	19,600	288,200	312,500
Bergschrund	24,014	26,876	23,519	17,639	17,521	21,547	20,217	19,739	18,711	18,292	15,556	17,929	14,134	230,677	254,691
Chamois	4,900	5,600	5,000	5,400	5,400	5,000	2,600	100	0	0	0	0	0	29,100	34,000
Chamois Vertical	43,180	48,650	43,660	45,550	45,410	41,450	44,200	43,530	43,200	43,740	38,190	42,800	37,560	517,940	561,120
Valle	0	0	0	0	0	0	0	0	0	0	0	0	0	0	0
Chillon 64 (stand-by)	0	0	0	0	0	0	0	0	0	0	0	0	0	0	0
Government	0	0	0	0	0	0	0	0	0	0	0	0	0	0	0
Lewter	6,380	6,660	5,648	5,886	5,569	5,287	5,183	5,290	5,076	5,188	4,641	5,128	4,641	64,197	70,577
Division 20 Totals	728,617	838,071	753,700	779,964	785,975	736,986	732,550	715,094	622,136	733,890	651,231	666,748	577,139	8,593,484	9,322,101
<b>Total District Sources</b>	<b>1,416,423</b>	<b>1,570,947</b>	<b>1,427,183</b>	<b>1,498,424</b>	<b>1,506,235</b>	<b>1,372,567</b>	<b>1,350,287</b>	<b>1,330,182</b>	<b>1,210,928</b>	<b>1,344,261</b>	<b>1,168,307</b>	<b>1,226,426</b>	<b>1,029,924</b>	<b>16,035,671</b>	<b>17,452,094</b>
<b>C.L.A.W.A.</b>															
Crest Forest 6"	0	0	57,888	57,888	296,123	375,535	334,492	336,497	294,118	303,877	341,310	283,556	273,262	2,954,546	2,954,546
Mile High Park 2"	0	0	152,553	152,553	237,286	289,639	292,447	266,805	234,104	182,540	164,158	128,824	109,291	2,210,200	2,210,200
Mile High Park 4"	0	0	0	0	0	0	0	0	0	0	0	0	0	0	0
Pinecrest 2"	0	0	0	0	0	0	0	0	2,273	0	443,757	77,527	0	523,557	523,557
Pinecrest 4"	360,294	568,449	591,578	591,578	862,834	1,152,139	1,193,984	1,206,417	963,636	522,193	67,914	562,567	329,813	8,613,102	8,973,396
Lake Drive 2"	0	0	0	0	34,425	113,636	0	116,324	0	0	0	0	0	264,385	264,385
Lake Drive 4"	0	0	0	0	113,503	66,845	0	27,273	0	0	0	0	0	207,621	207,621
Camp Seely	18,449	37,968	76,471	76,471	97,727	93,449	68,182	37,701	46,925	102,674	63,904	28,877	0	730,349	748,798
<b>C.L.A.W.A. Totals</b>	<b>378,743</b>	<b>606,417</b>	<b>878,490</b>	<b>878,490</b>	<b>1,641,898</b>	<b>2,091,243</b>	<b>1,889,105</b>	<b>1,991,017</b>	<b>1,541,056</b>	<b>1,111,284</b>	<b>1,081,043</b>	<b>1,081,351</b>	<b>712,366</b>	<b>15,503,760</b>	<b>15,882,503</b>
<b>Grand Totals</b>	<b>1,795,166</b>	<b>2,177,364</b>	<b>2,305,673</b>	<b>2,376,914</b>	<b>3,148,133</b>	<b>3,463,810</b>	<b>3,239,392</b>	<b>3,321,199</b>	<b>2,751,984</b>	<b>2,455,545</b>	<b>2,249,350</b>	<b>2,307,777</b>	<b>1,742,290</b>	<b>31,539,431</b>	<b>33,334,597</b>

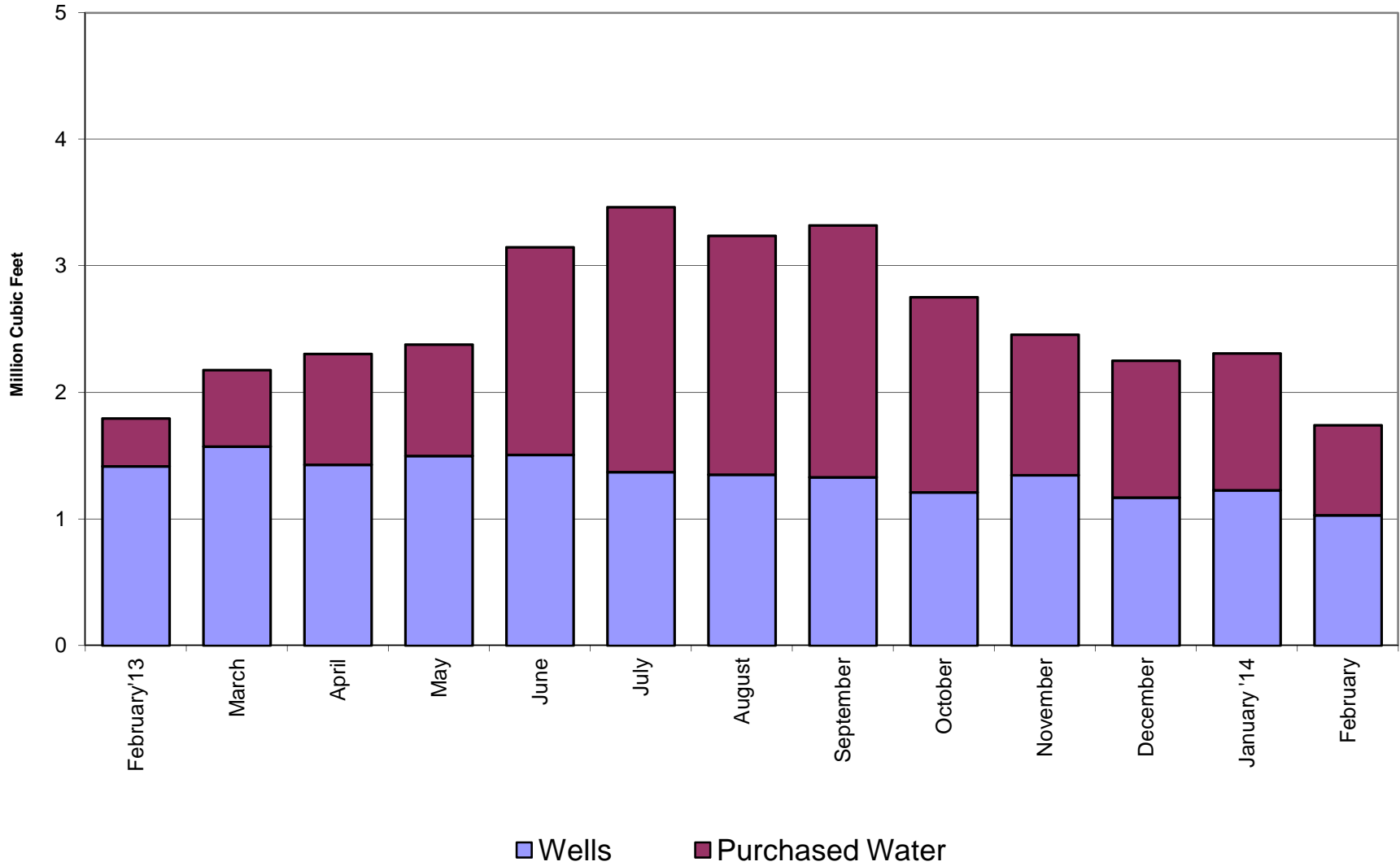
**Crestline Village Water District  
Source of Supply Production Report  
Cubic Feet  
Last 13 Months**

03/13/14

<u>Source Name</u>	<u>February'13</u>	<u>March</u>	<u>April</u>	<u>May</u>	<u>June</u>	<u>July</u>	<u>August</u>	<u>September</u>	<u>October</u>	<u>November</u>	<u>December</u>	<u>January '14</u>	<u>February</u>	<u>Last 12 Months</u>	<u>13 Months</u>
<b>District Sources</b>															
Division 10	687,806	732,876	673,483	718,460	720,260	635,581	617,737	615,088	588,792	610,371	517,076	559,678	452,785	7,442,187	8,129,993
Division 20	728,617	838,071	753,700	779,964	785,975	736,986	732,550	715,094	622,136	733,890	651,231	666,748	577,139	8,593,484	9,322,101
<b>Total</b>	<b>1,416,423</b>	<b>1,570,947</b>	<b>1,427,183</b>	<b>1,498,424</b>	<b>1,506,235</b>	<b>1,372,567</b>	<b>1,350,287</b>	<b>1,330,182</b>	<b>1,210,928</b>	<b>1,344,261</b>	<b>1,168,307</b>	<b>1,226,426</b>	<b>1,029,924</b>	<b>16,035,671</b>	<b>17,452,094</b>
Division 10	48.56%	46.65%	47.19%	47.95%	47.82%	46.31%	45.75%	46.24%	48.62%	45.41%	44.26%	45.63%	43.96%	46.41%	46.58%
Division 20	51.44%	53.35%	52.81%	52.05%	52.18%	53.69%	54.25%	53.76%	51.38%	54.59%	55.74%	54.37%	56.04%	53.59%	53.42%
<b>Total</b>	<b>100.00%</b>	<b>100.00%</b>	<b>100.00%</b>	<b>100.00%</b>	<b>100.00%</b>	<b>100.00%</b>	<b>100.00%</b>	<b>100.00%</b>	<b>100.00%</b>	<b>100.00%</b>	<b>100.00%</b>	<b>100.00%</b>	<b>100.00%</b>	<b>100.00%</b>	<b>100.00%</b>
<b>All Sources</b>															
District Sources	1,416,423	1,570,947	1,427,183	1,498,424	1,506,235	1,372,567	1,350,287	1,330,182	1,210,928	1,344,261	1,168,307	1,226,426	1,029,924	16,035,671	17,452,094
C.L.A.W.A.	378,743	606,417	878,490	878,490	1,641,898	2,091,243	1,889,105	1,991,017	1,541,056	1,111,284	1,081,043	1,081,351	712,366	15,503,760	15,882,503
<b>Total Sources</b>	<b>1,795,166</b>	<b>2,177,364</b>	<b>2,305,673</b>	<b>2,376,914</b>	<b>3,148,133</b>	<b>3,463,810</b>	<b>3,239,392</b>	<b>3,321,199</b>	<b>2,751,984</b>	<b>2,455,545</b>	<b>2,249,350</b>	<b>2,307,777</b>	<b>1,742,290</b>	<b>31,539,431</b>	<b>33,334,597</b>
District Sources	78.90%	72.15%	61.90%	63.04%	47.85%	39.63%	41.68%	40.05%	44.00%	54.74%	51.94%	53.14%	59.11%	50.84%	52.35%
C.L.A.W.A.	21.10%	27.85%	38.10%	36.96%	52.15%	60.37%	58.32%	59.95%	56.00%	45.26%	48.06%	46.86%	40.89%	49.16%	47.65%
<b>Total Sources</b>	<b>100.00%</b>	<b>100.00%</b>	<b>100.00%</b>	<b>100.00%</b>	<b>100.00%</b>	<b>100.00%</b>	<b>100.00%</b>	<b>100.00%</b>	<b>100.00%</b>	<b>100.00%</b>	<b>100.00%</b>	<b>100.00%</b>	<b>100.00%</b>	<b>100.00%</b>	<b>100.00%</b>

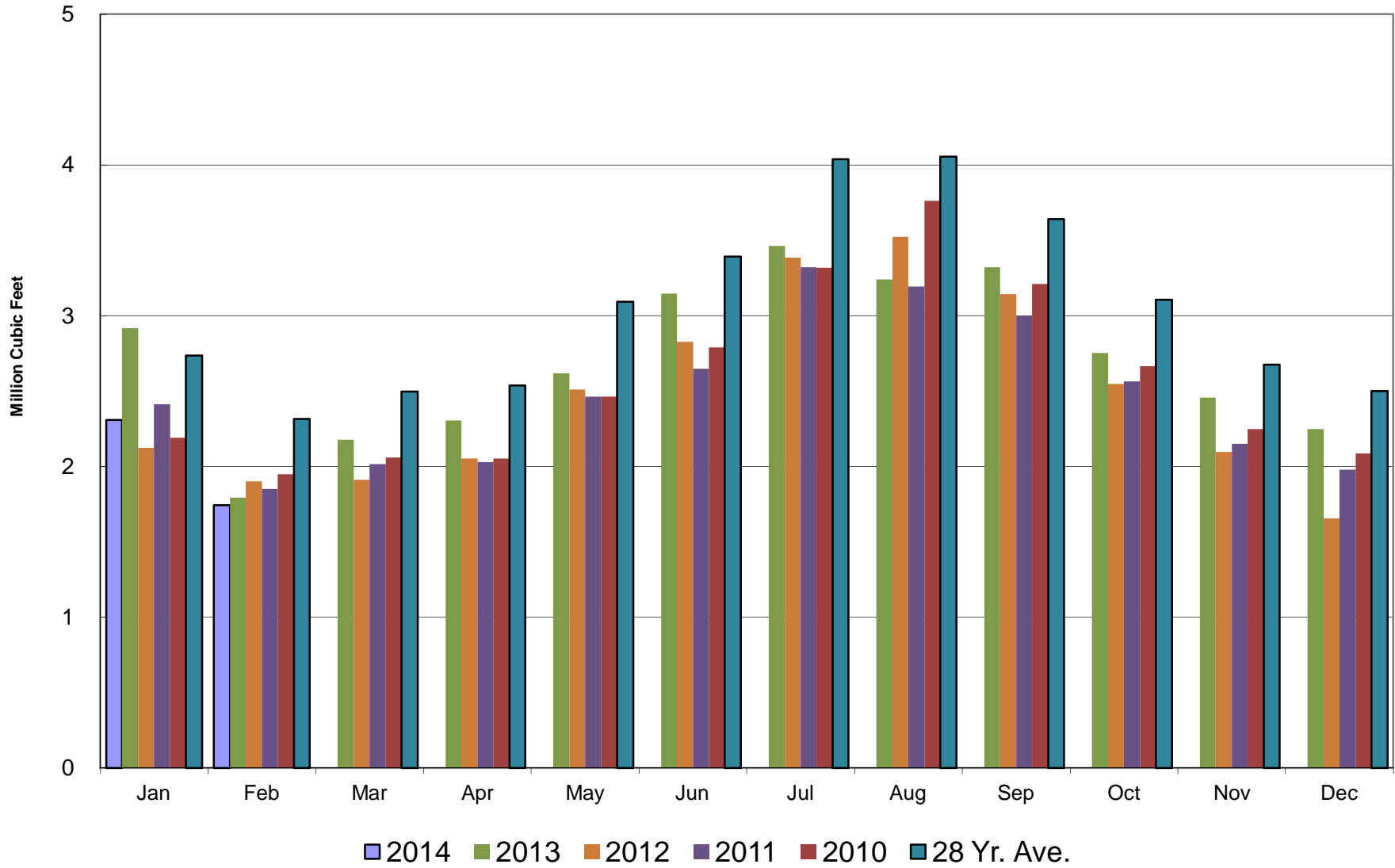
# Crestline Village Water District

## Water Sources - Last 13 Months



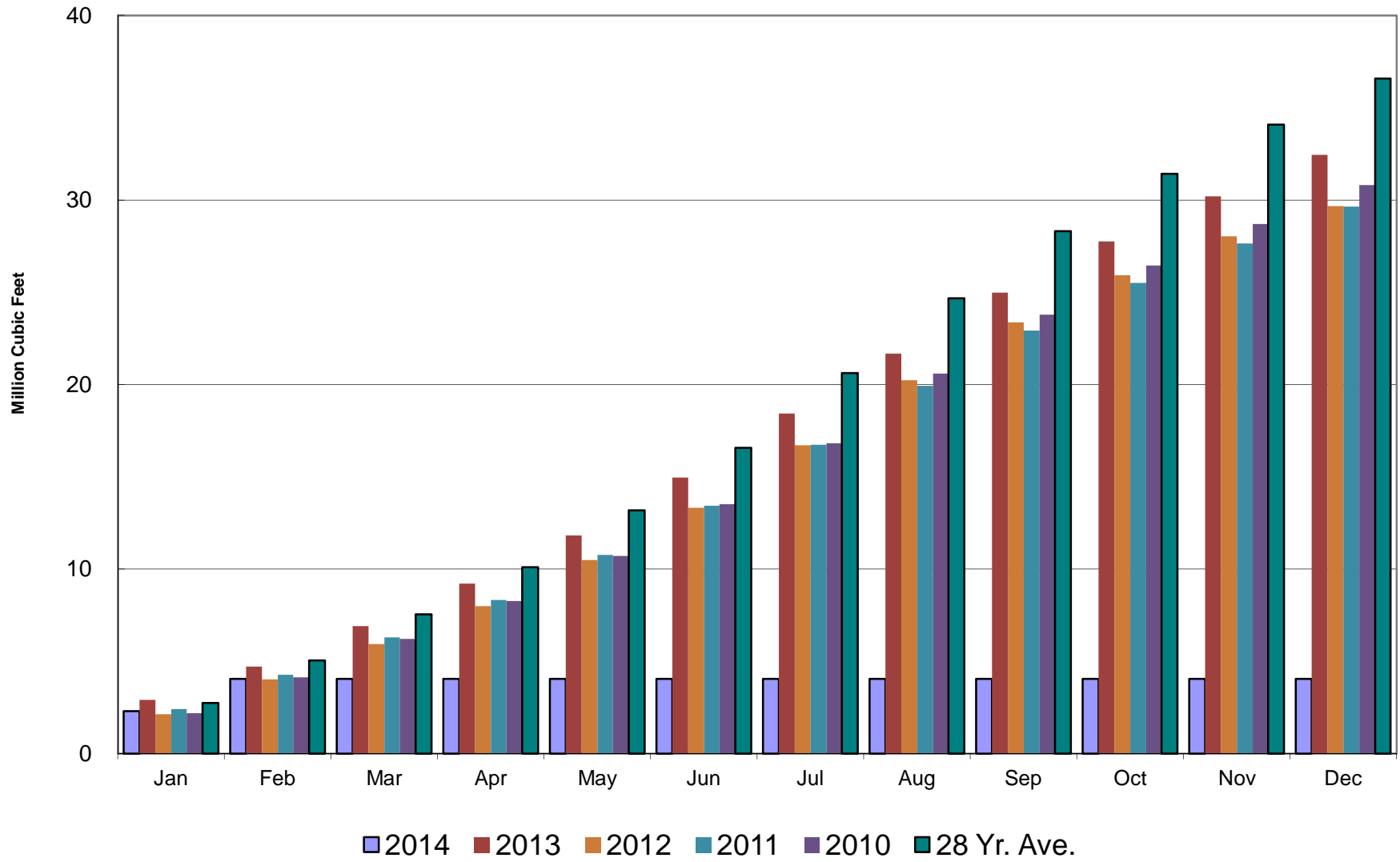
# Crestline Village Water District

## Total Production by Month



# Crestline Village Water District

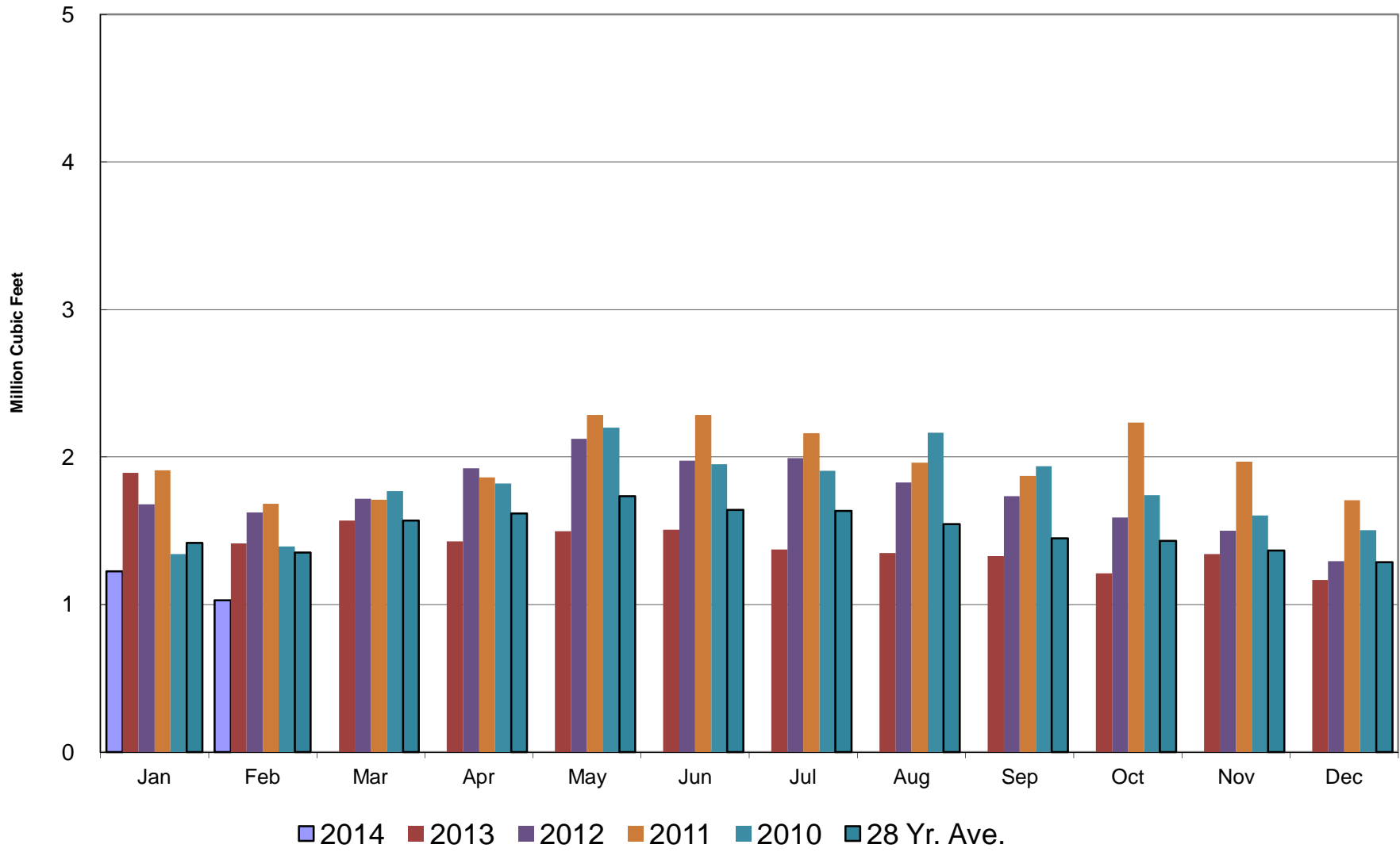
## Total Production Cumulative





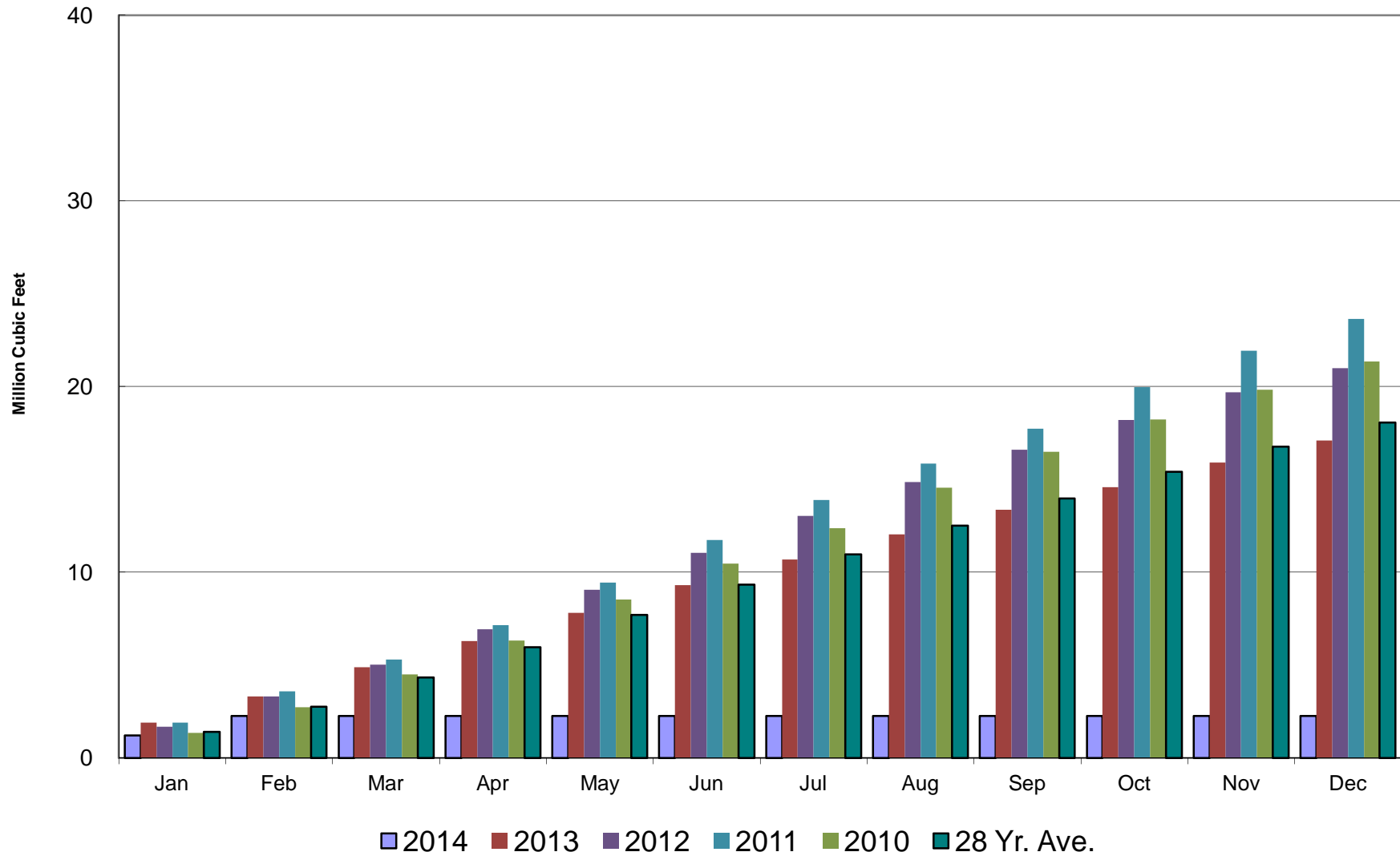
# Crestline Village Water District

## Well Production by Month



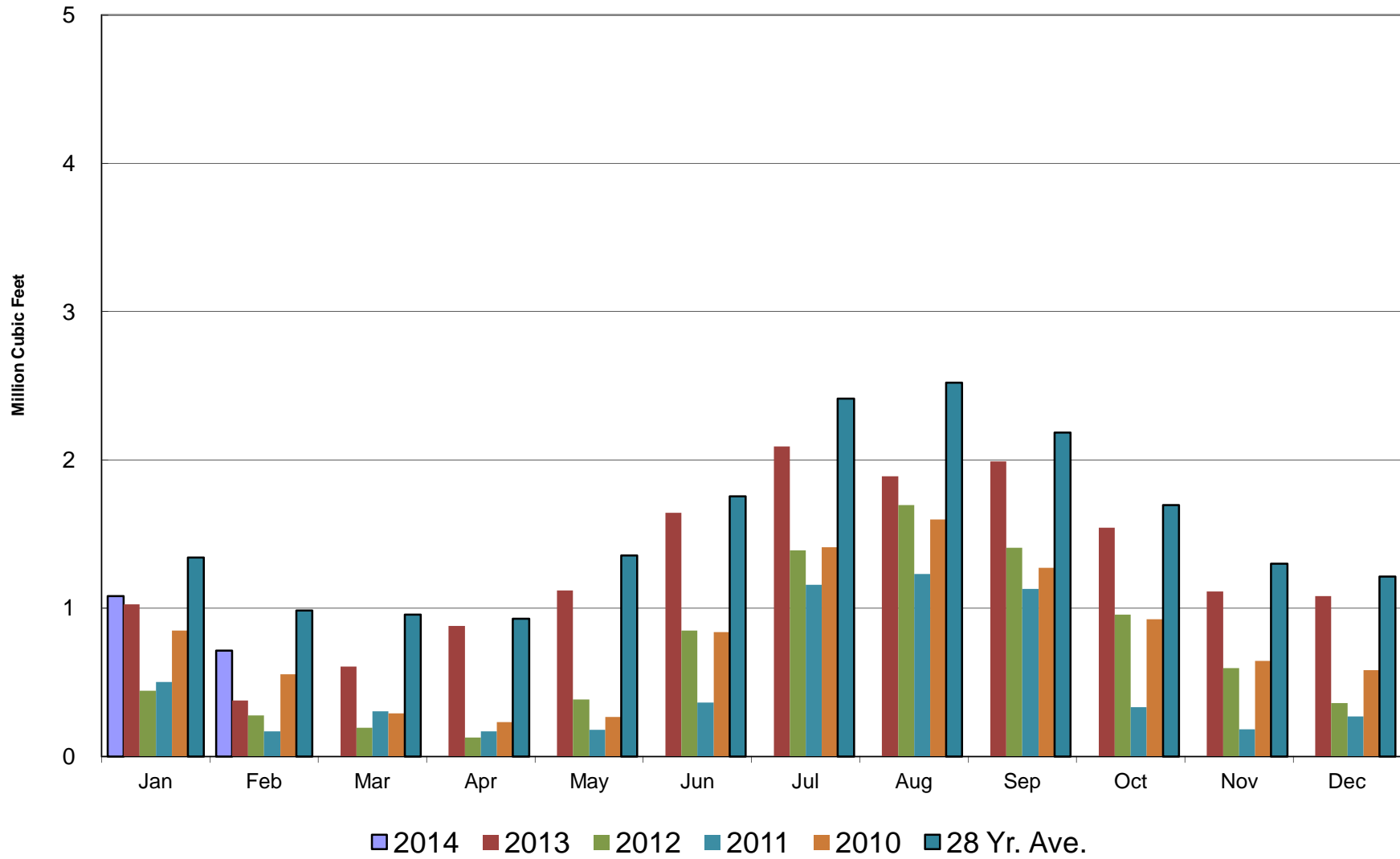
# Crestline Village Water District

## Well Production Cumulative



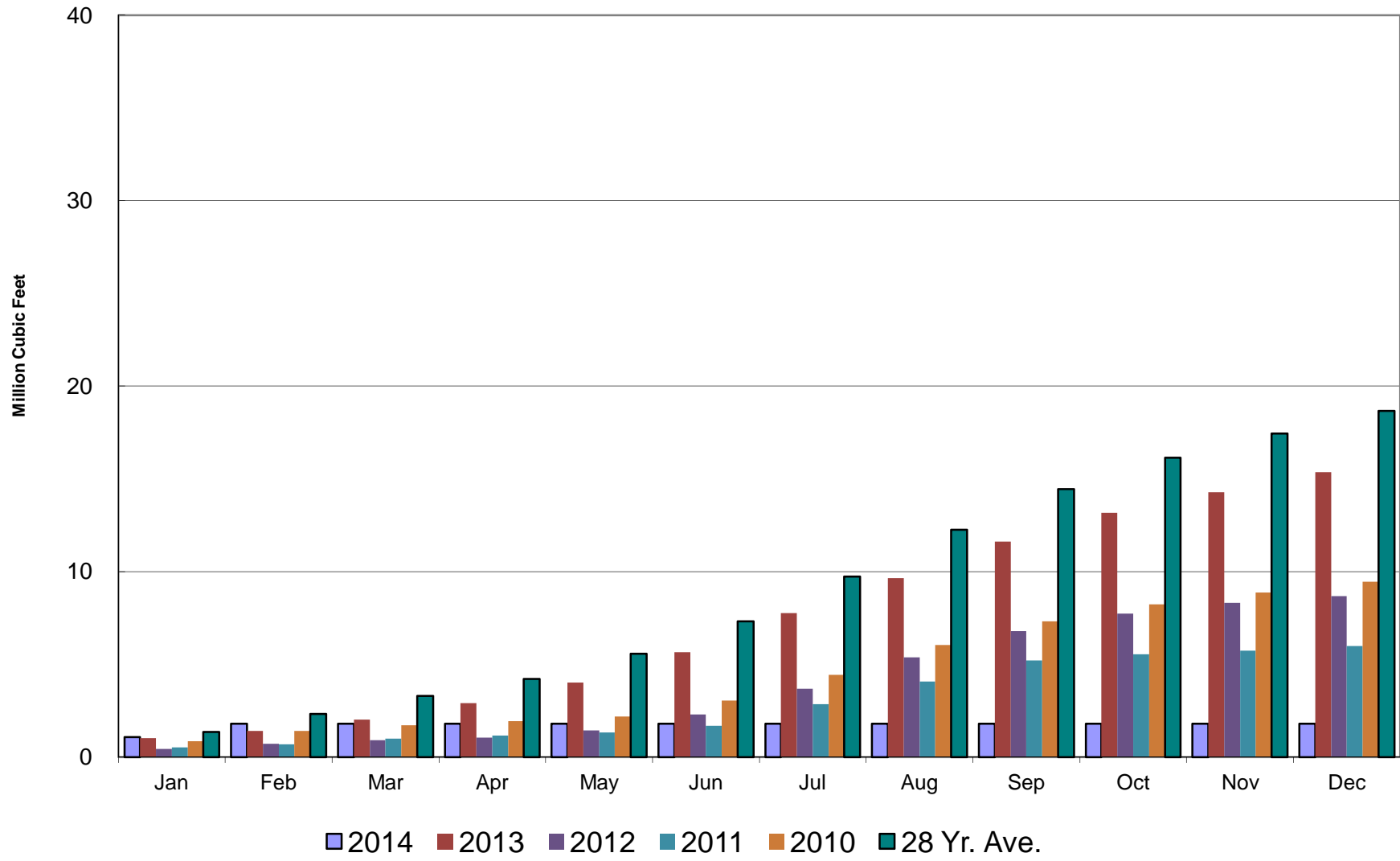
# Crestline Village Water District

## Purchased Water by Month



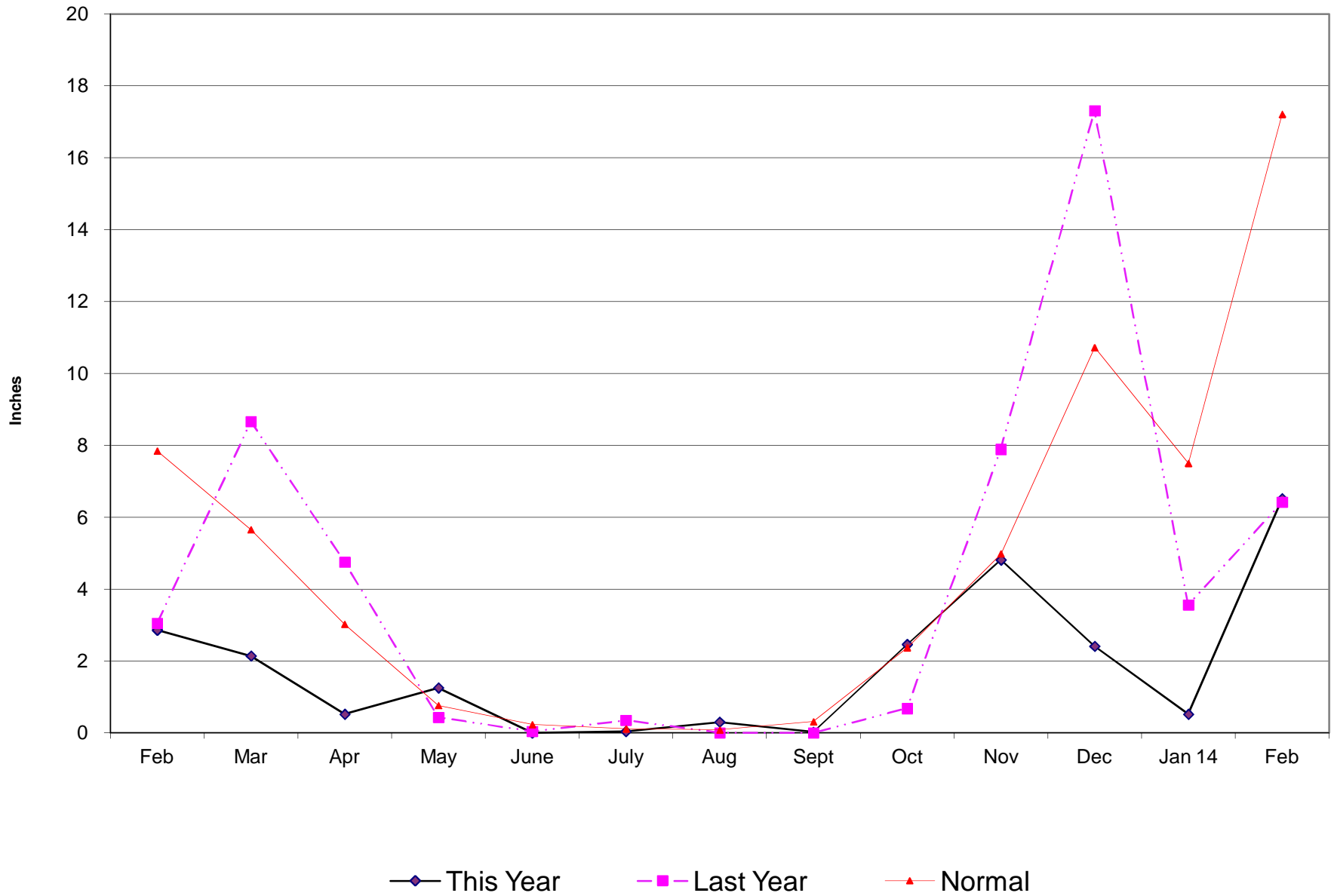
# Crestline Village Water District

## Purchased Water Cumulative



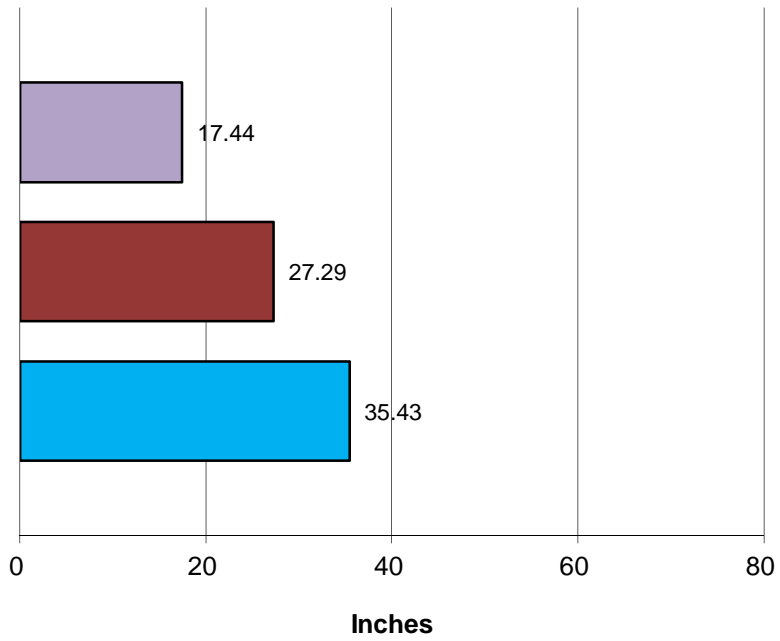
# Crestline Village Water District

## Rainfall - Last 13 Months



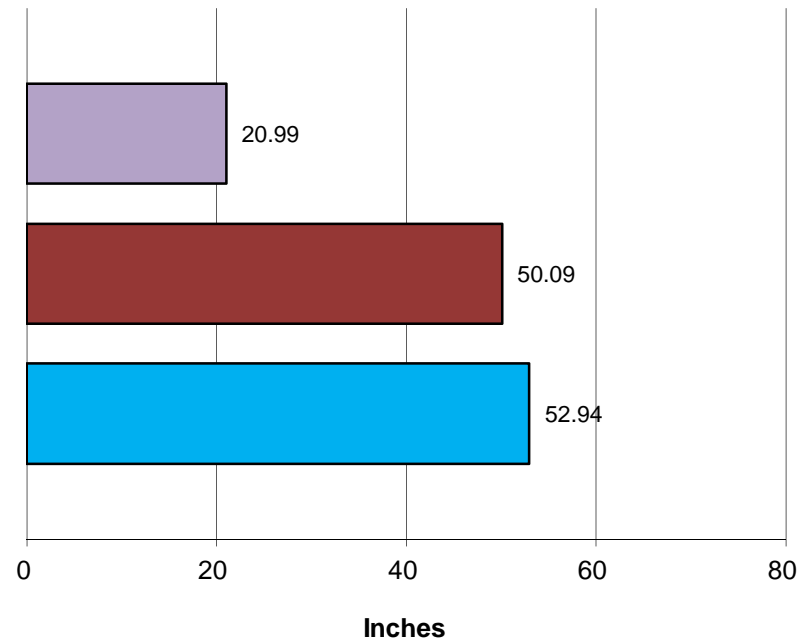
# Crestline Village Water District

### Total Rainfall July 1, 2013 to Beginning of Current Month



■ This Year ■ Last Year ■ Normal

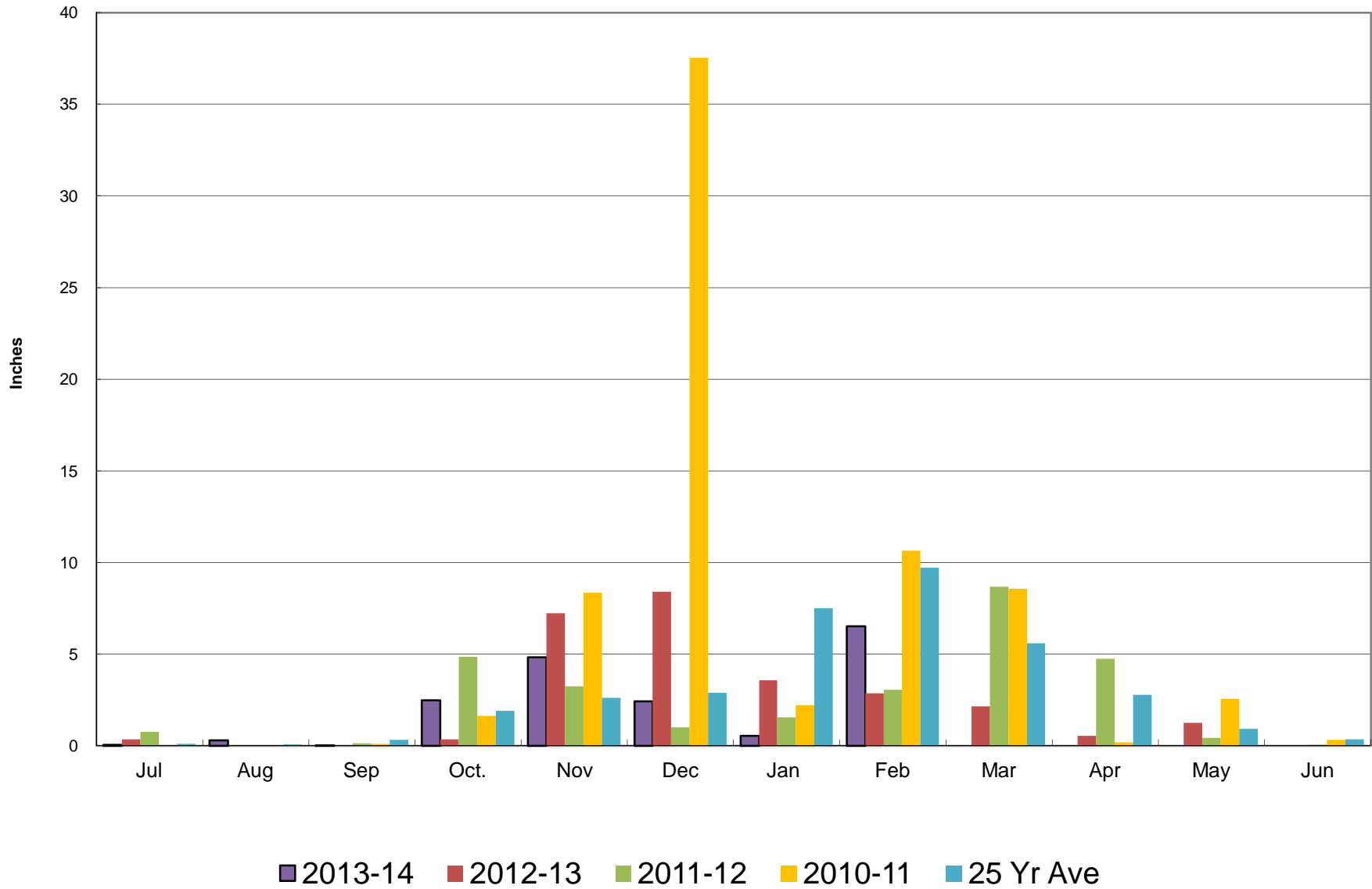
### Total Rainfall Last 12 Months



■ This Year ■ Last Year ■ Normal

# Crestline Village Water District

## Rainfall by Month



# Crestline Village Water District

## Rainfall Cumulative

